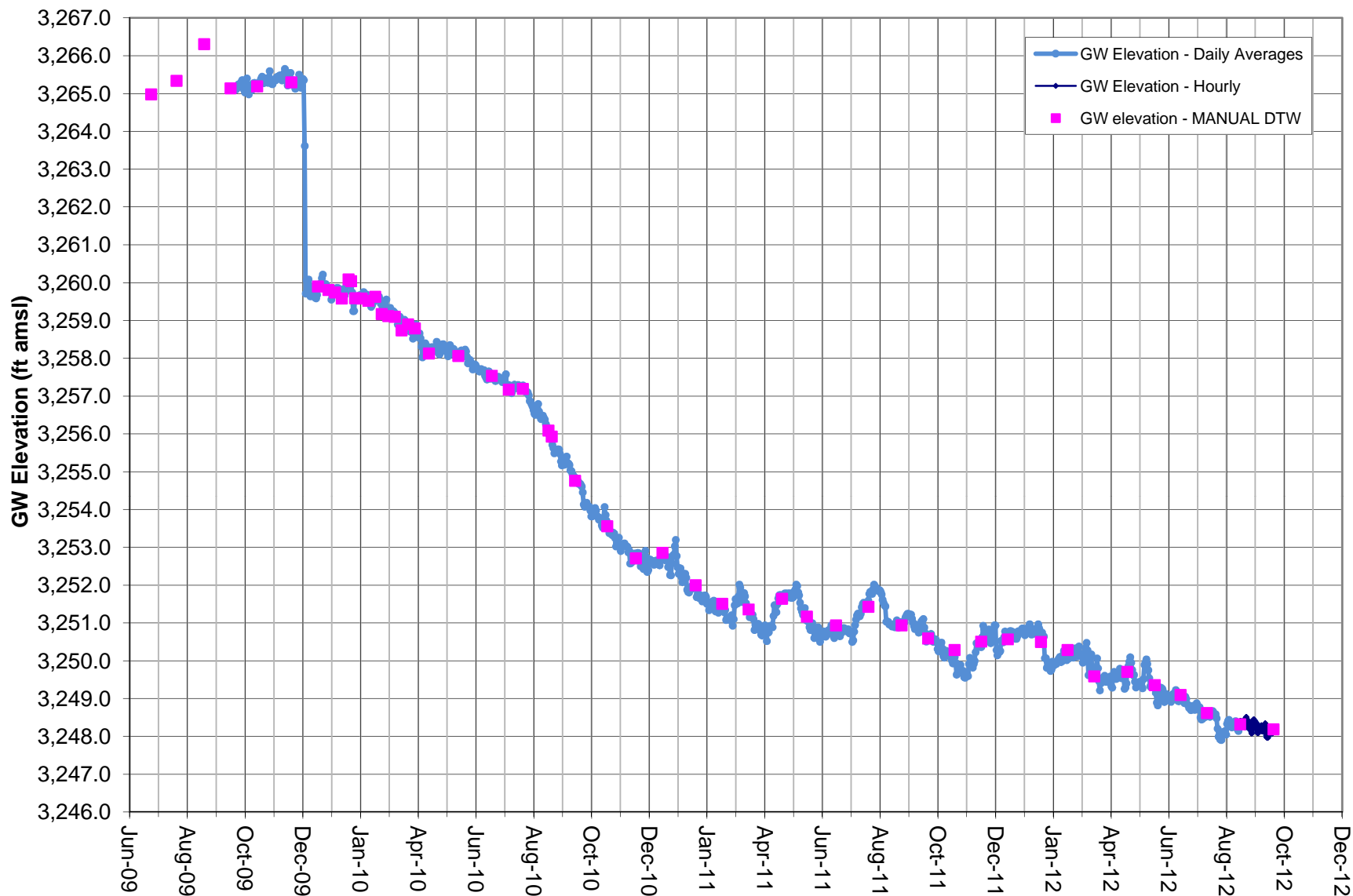
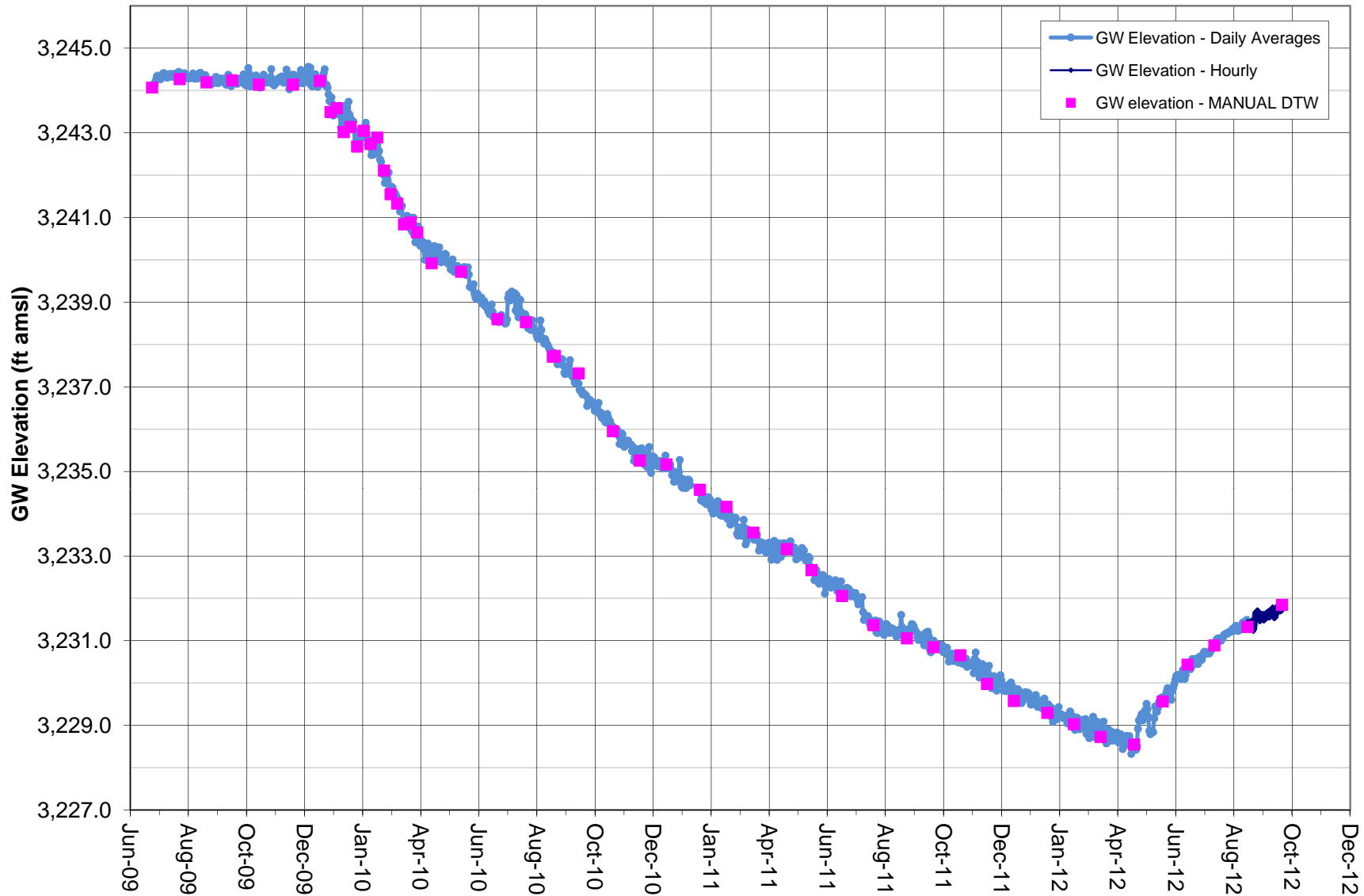


GROUNDWATER ELEVATION DATA - Transducer RV030 - Cal Pumice Well



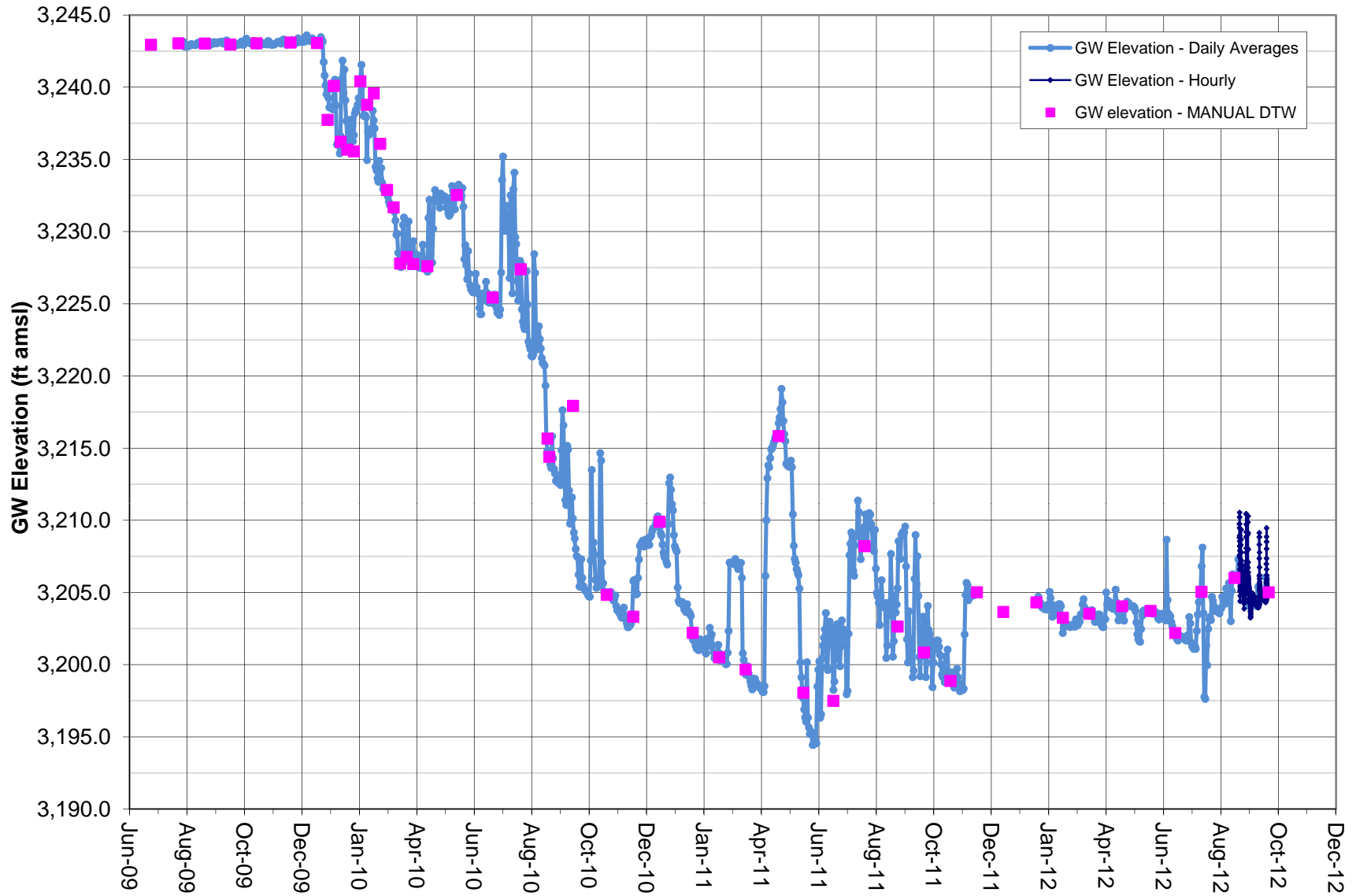
Note: Transducer data adjusted by BaroTroll and correlated to Manual DTW.
 The 12/3/09 GWE decrease was confirmed by in-well PT and manual DTW.
 Coso Operating Co. initiated Hay Ranch Project pumping on 12/25/09.

GROUNDWATER ELEVATION DATA - Transducer RV060 - HR 1A Well



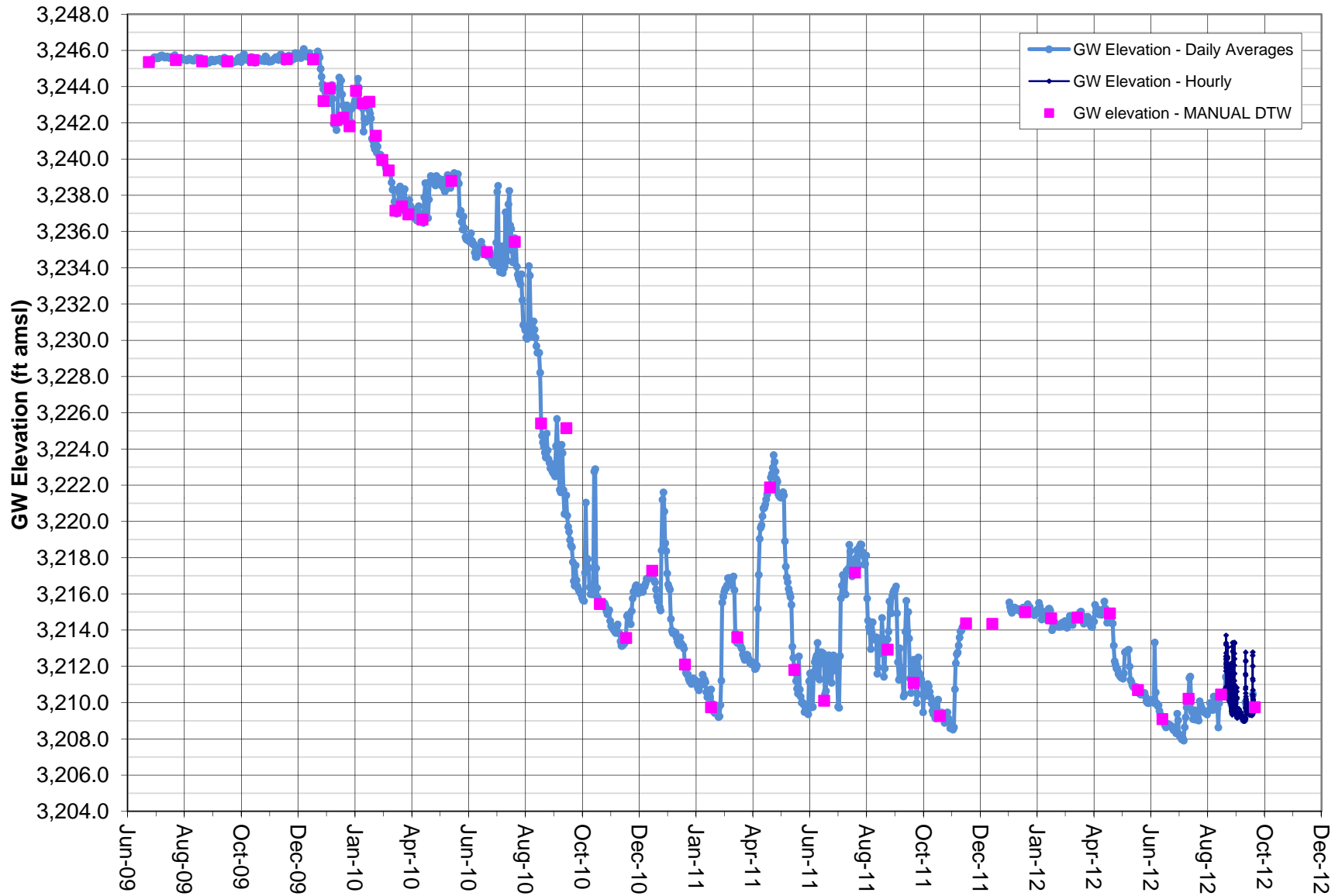
Note: Screened interval 170-260 feet.
 Coso Operating Co. initiated Hay Ranch Project pumping on 12/25/09.
 HR 1A data gap from 1/10/11 to 1/20/11 due to transducer malfunction.

GROUNDWATER ELEVATION DATA - Transducer RV061 - HR 1B Well



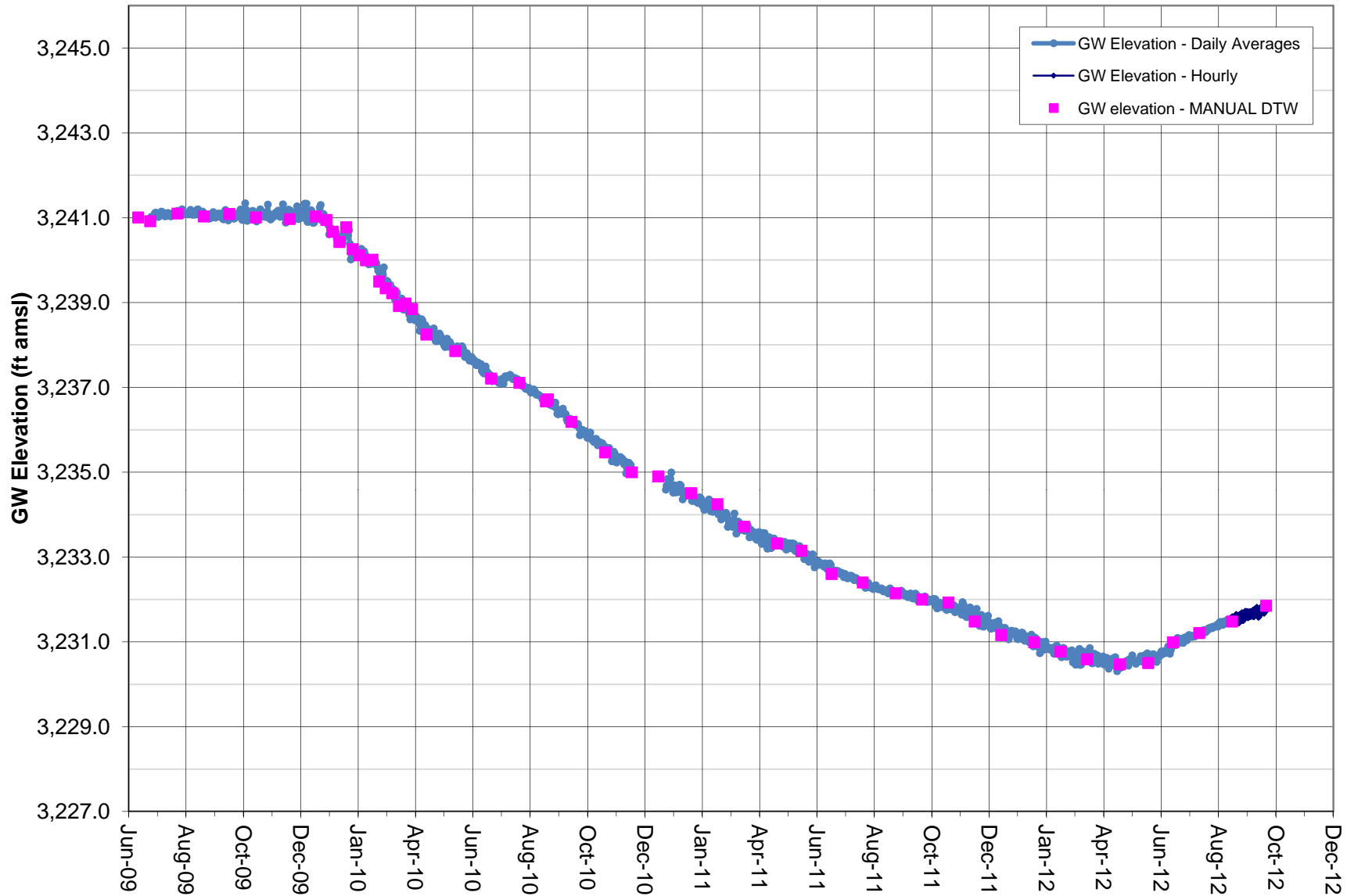
Note: Transducer data (absolute pressure) adjusted by data logged from BaroTroll and correlated to Manual DTW measurements. Screened interval 490-540 feet.
HR 1B data gap from 11/16/11 to 1/18/12 due to transducer malfunction.

GROUNDWATER ELEVATION DATA - Transducer RV062 - HR 1C Well



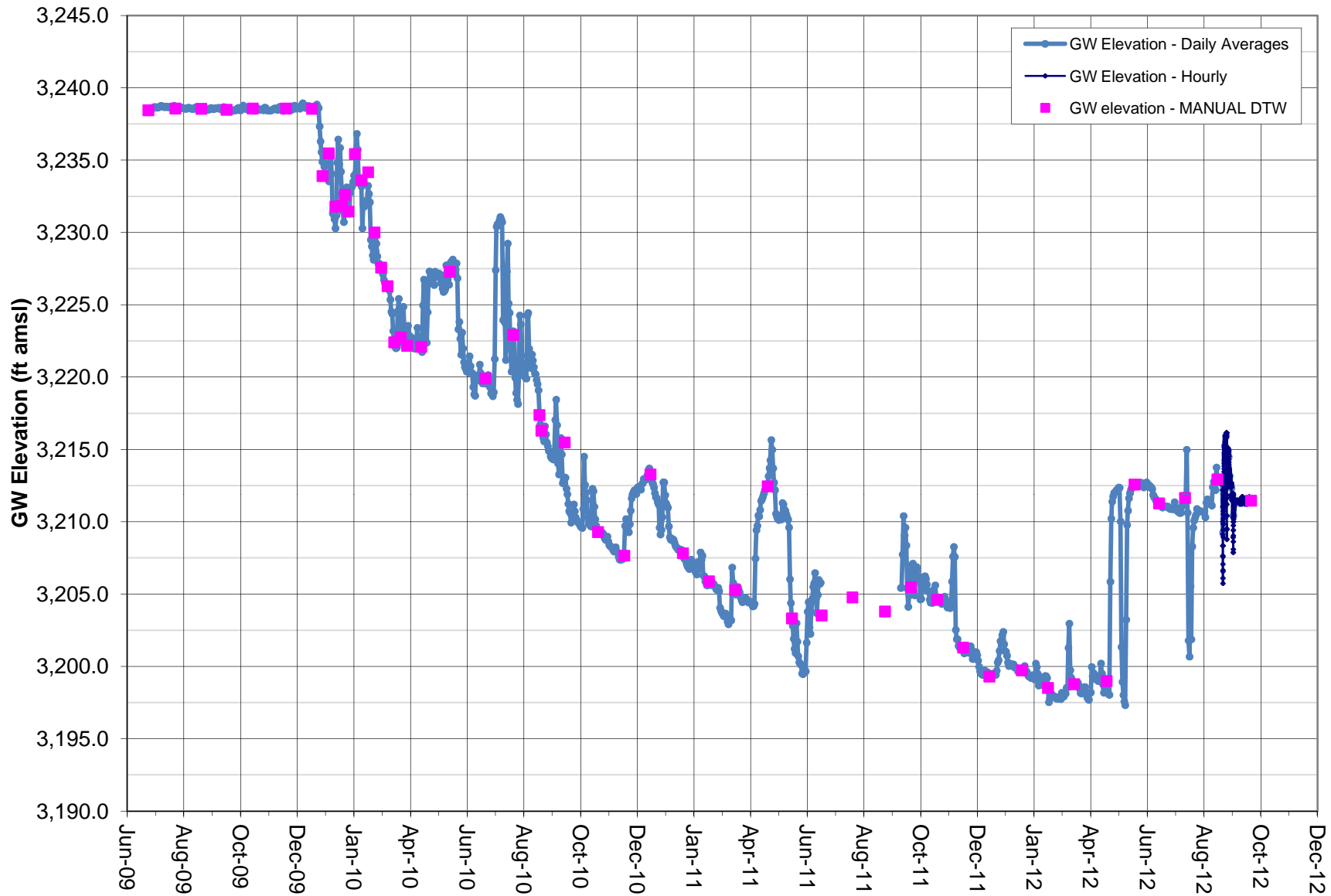
Note: Transducer data (absolute pressure) adjusted by data logged from BaroTroll and correlated to Manual DTW measurements. Screened interval 340-405 feet. HR 1C data gap from 11/16/11 to 1/1/12 due to transducer malfunction.

GROUNDWATER ELEVATION DATA - Transducer RV080 - HR 2A Well



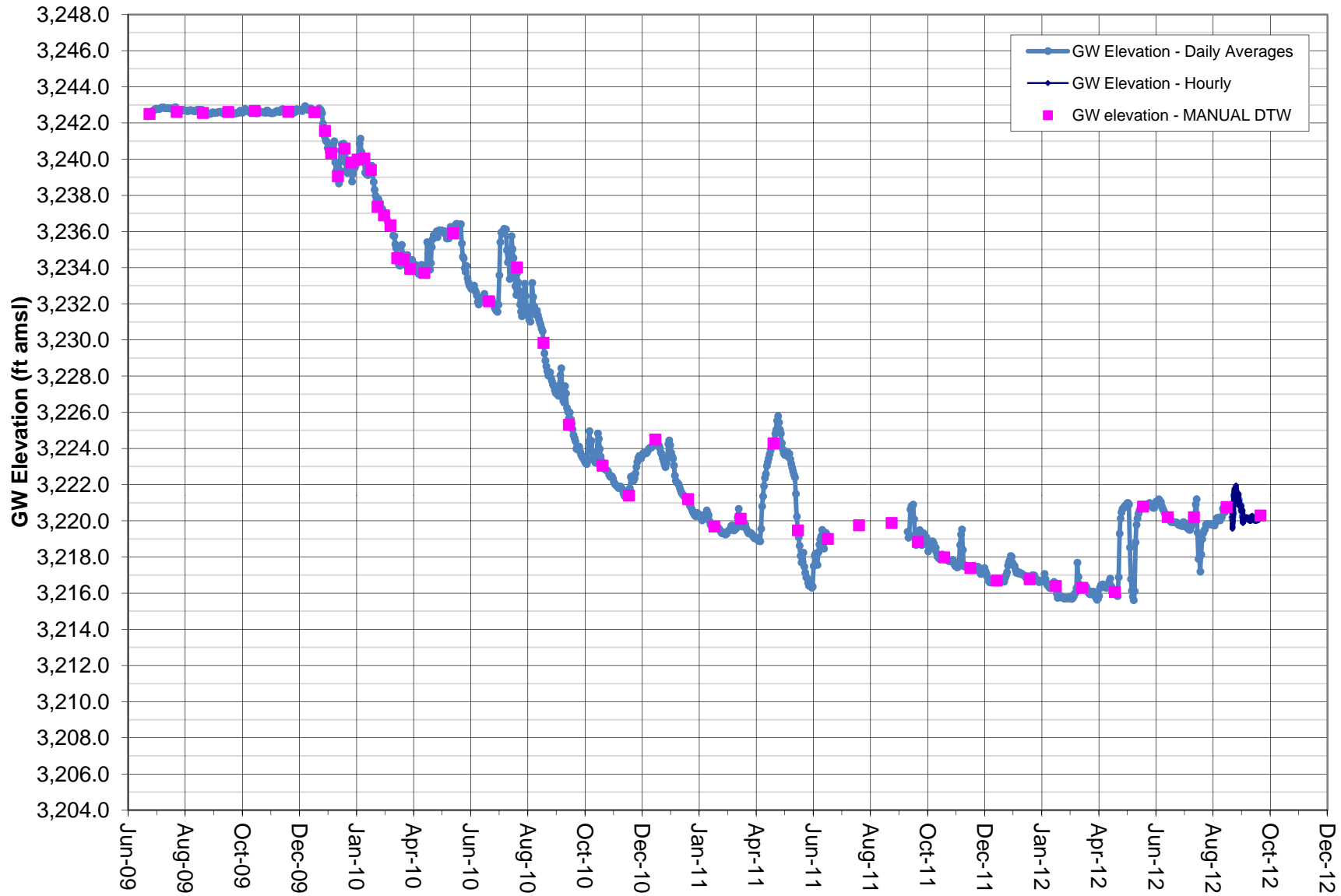
Note: Screened interval 180-300 feet.
 Coso Operating Co. initiated Hay Ranch Project pumping on 12/25/09.
 HR 2A data gap from 11/17/10 to 12/23/10 due to transducer malfunction.

GROUNDWATER ELEVATION DATA - Transducer RV081 - HR 2B Well



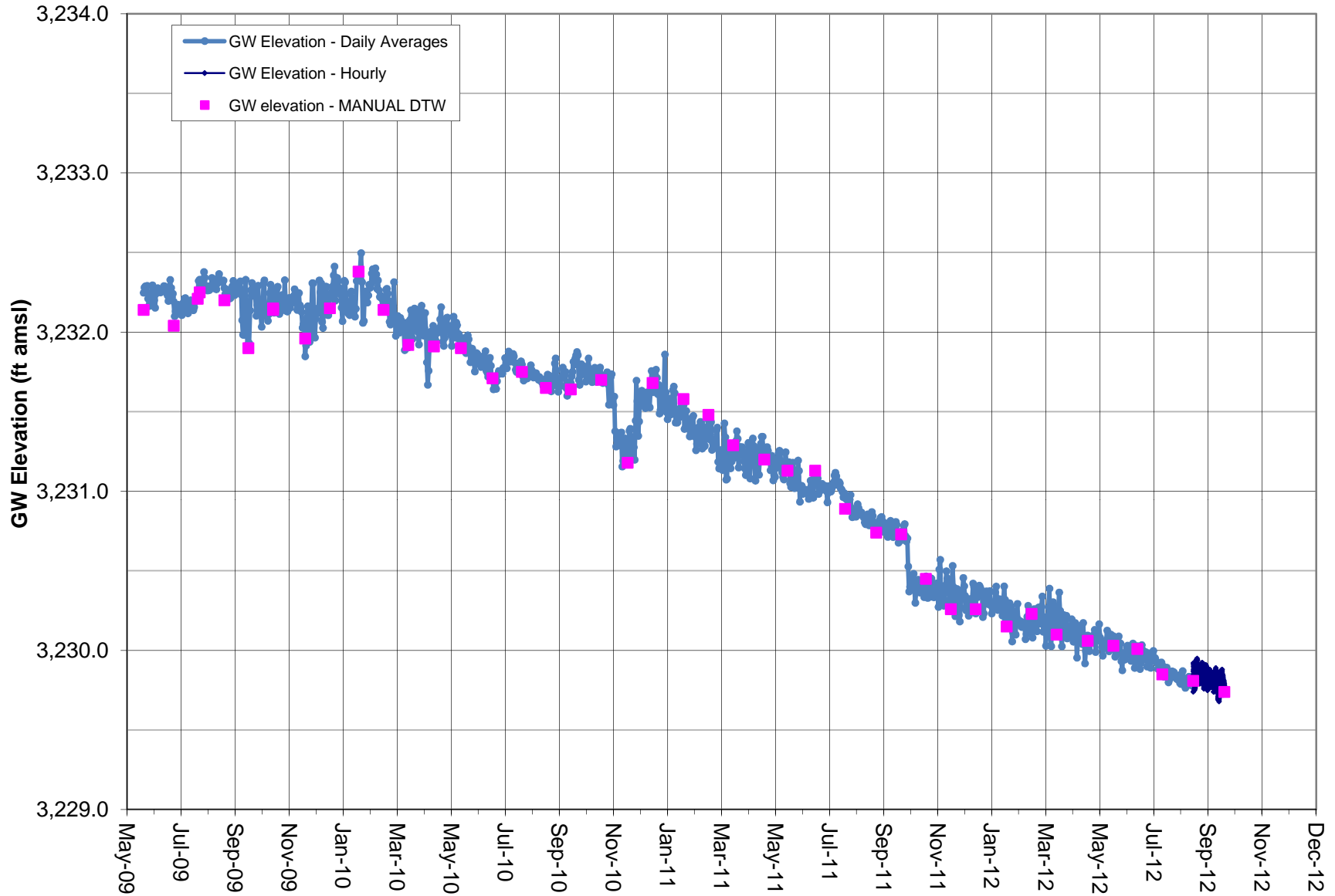
Note: HR 2B data gap from 6/17/11 to 9/9/11 due to transducer malfunction.
 Screened interval 519-584 feet.
 Coso Operating Co. initiated Hay Ranch Project pumping on 12/25/09.

GROUNDWATER ELEVATION DATA - Transducer RV082 - HR 2C Well



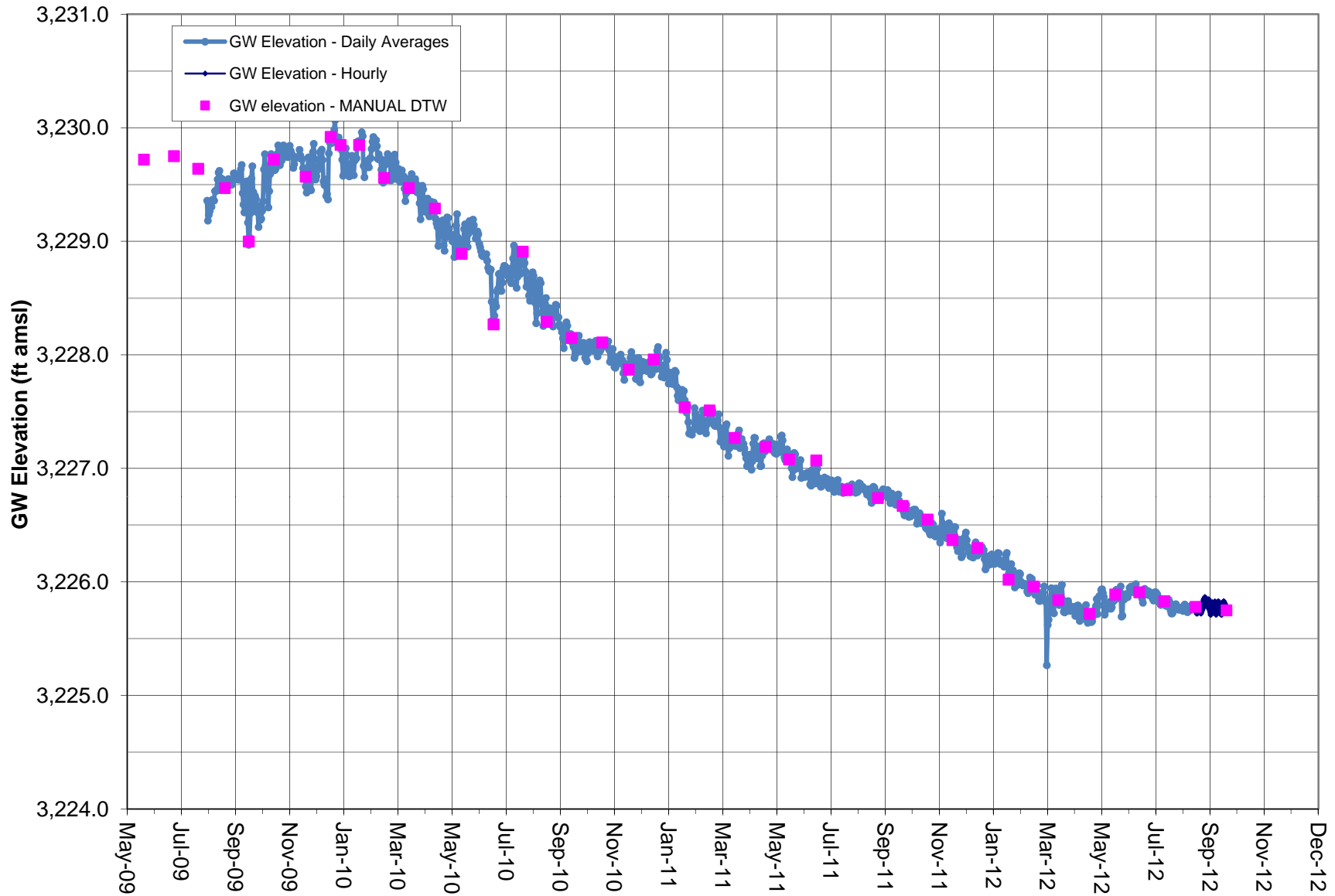
Note: HR 2C data gap from 6/17/11 to 9/9/11 due to transducer malfunction.
 Screened interval 370-420 feet.
 Coso Operating Co. initiated Hay Ranch Project pumping on 12/25/09.

GROUNDWATER ELEVATION DATA - Transducer RV090 - Coso Junction Ranch Well



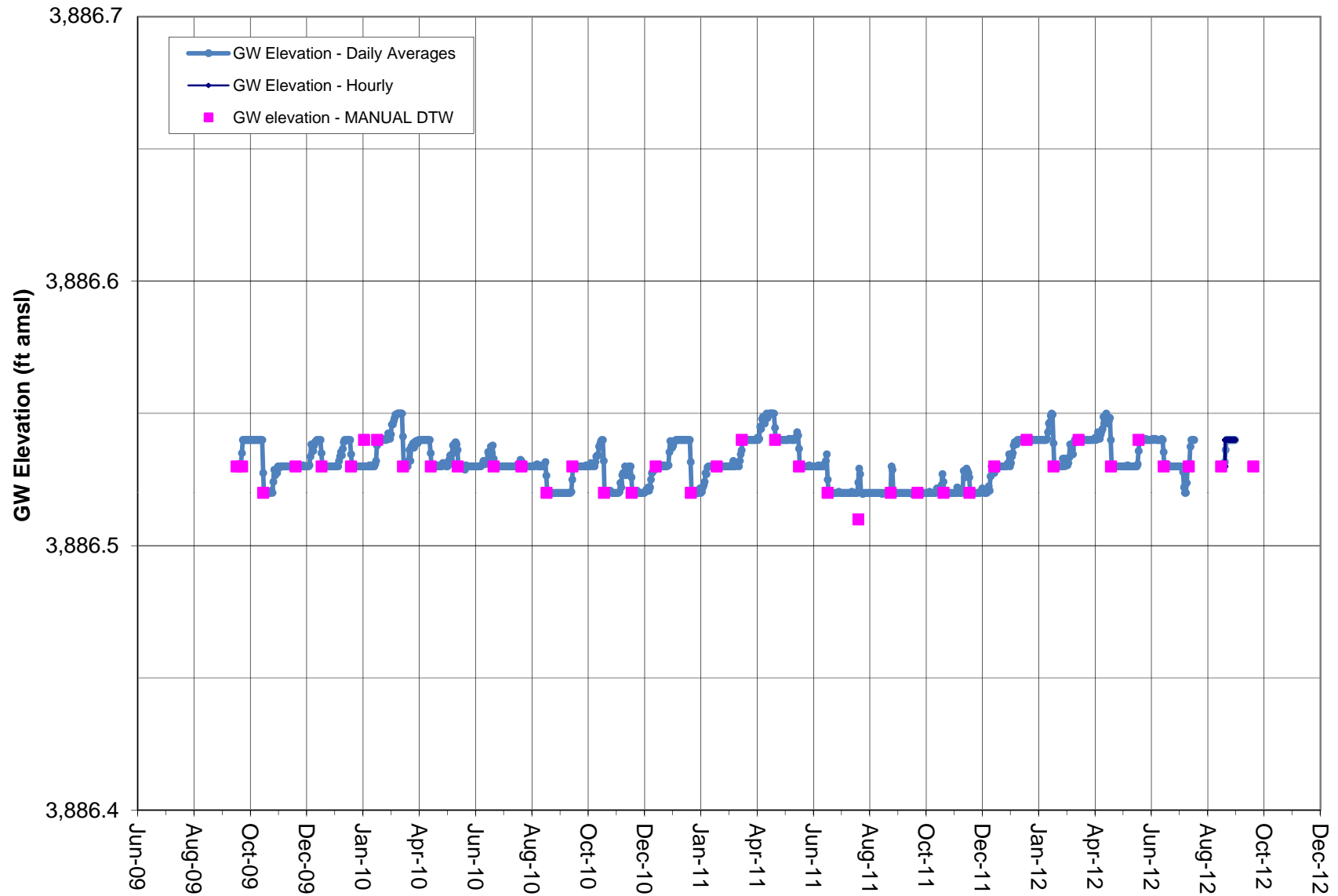
Note: Transducer data (absolute pressure) adjusted by data logged from BaroTroll and correlated to Manual DTW measurements.
Coso Operating Co. initiated Hay Ranch Project pumping on 12/25/09.

GROUNDWATER ELEVATION DATA - Transducer RV100- Coso Junction Store#1 Well



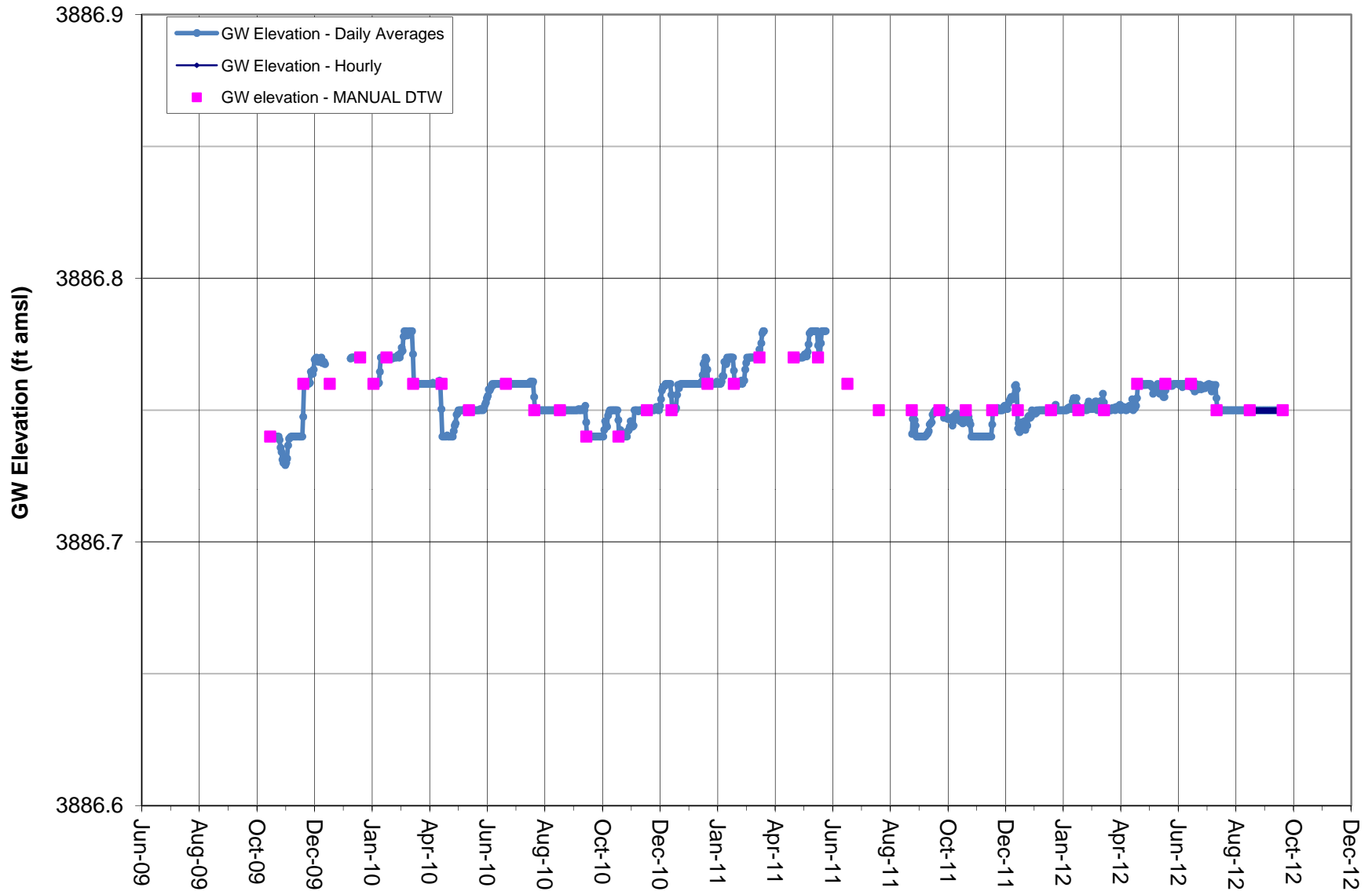
Note: Transducer data (absolute pressure) adjusted by data logged from BaroTroll and correlated to Manual DTW measurements.
Coso Operating Co. initiated Hay Ranch Project pumping on 12/25/09.

GROUNDWATER ELEVATION DATA - Transducer RV110 - Davis Ranch North Well



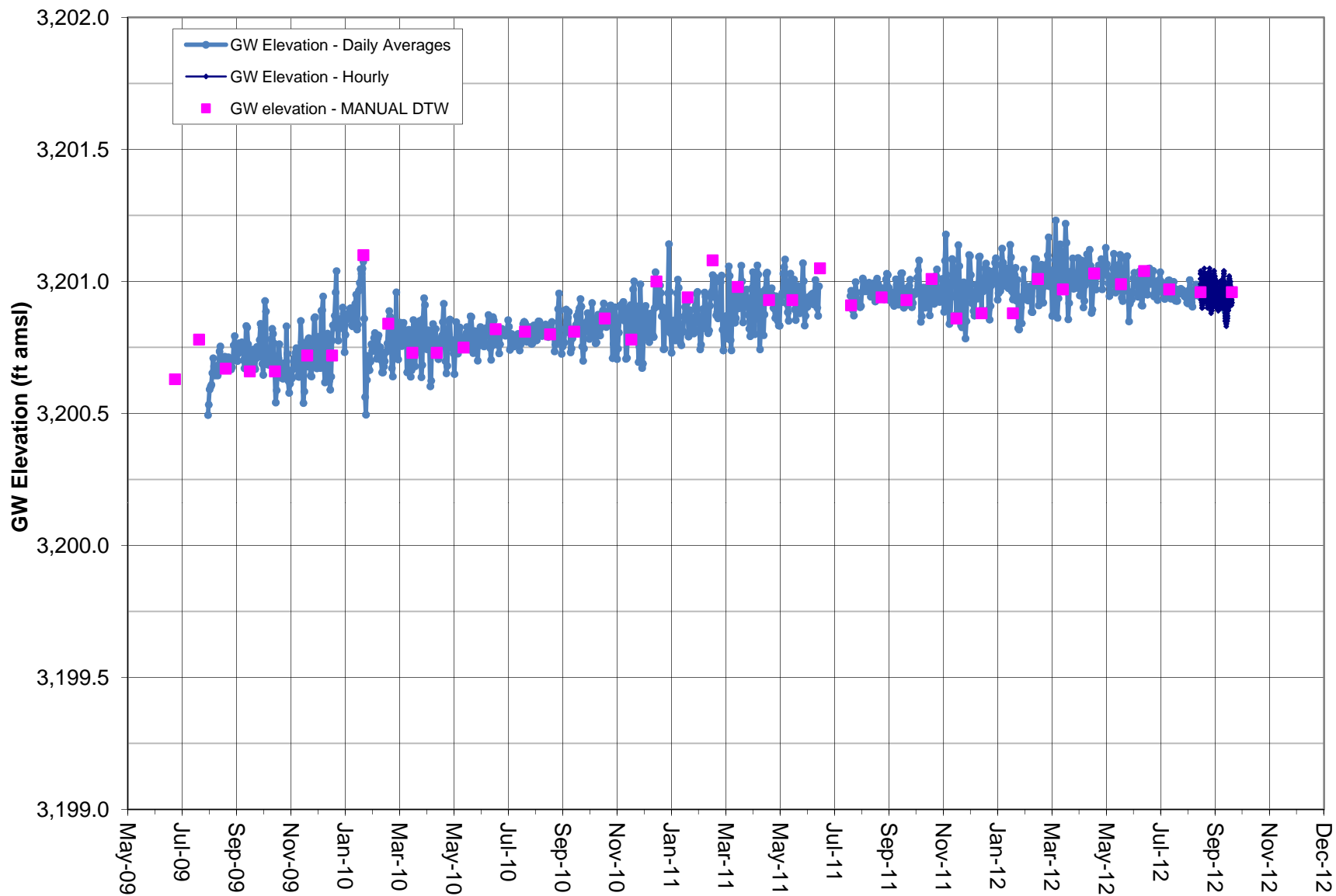
Note: Vented transducer data correlated to Manual DTW measurements.
 DTW measured to .01 foot; GWE calculated using approximate surface elevation.
 Coso Operating Co. initiated Hay Ranch Project pumping on 12/25/09.

GROUNDWATER ELEVATION DATA - Transducer RV111 - Davis Ranch South Well



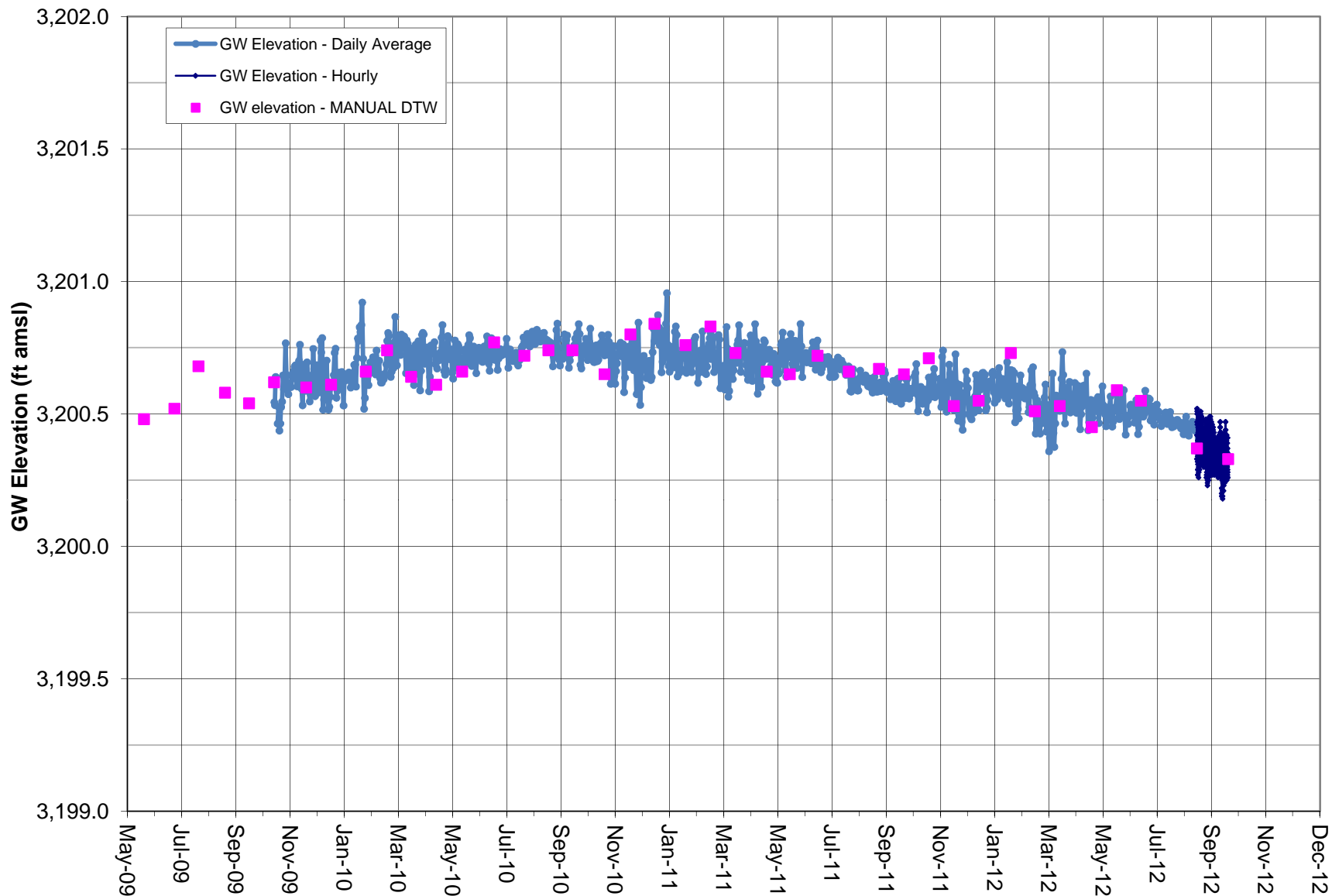
Note: Vented transducer data correlated to Manual DTW measurements.
 DR South data gaps from 12/12/09 to 2/5/10, and 3/21/11 to 8/25/11 due to transducer malfunction.
 Coso Operating Co. initiated Hay Ranch Project pumping on 12/25/09.

GROUNDWATER ELEVATION DATA - Transducer RV120 - Red Hill Well



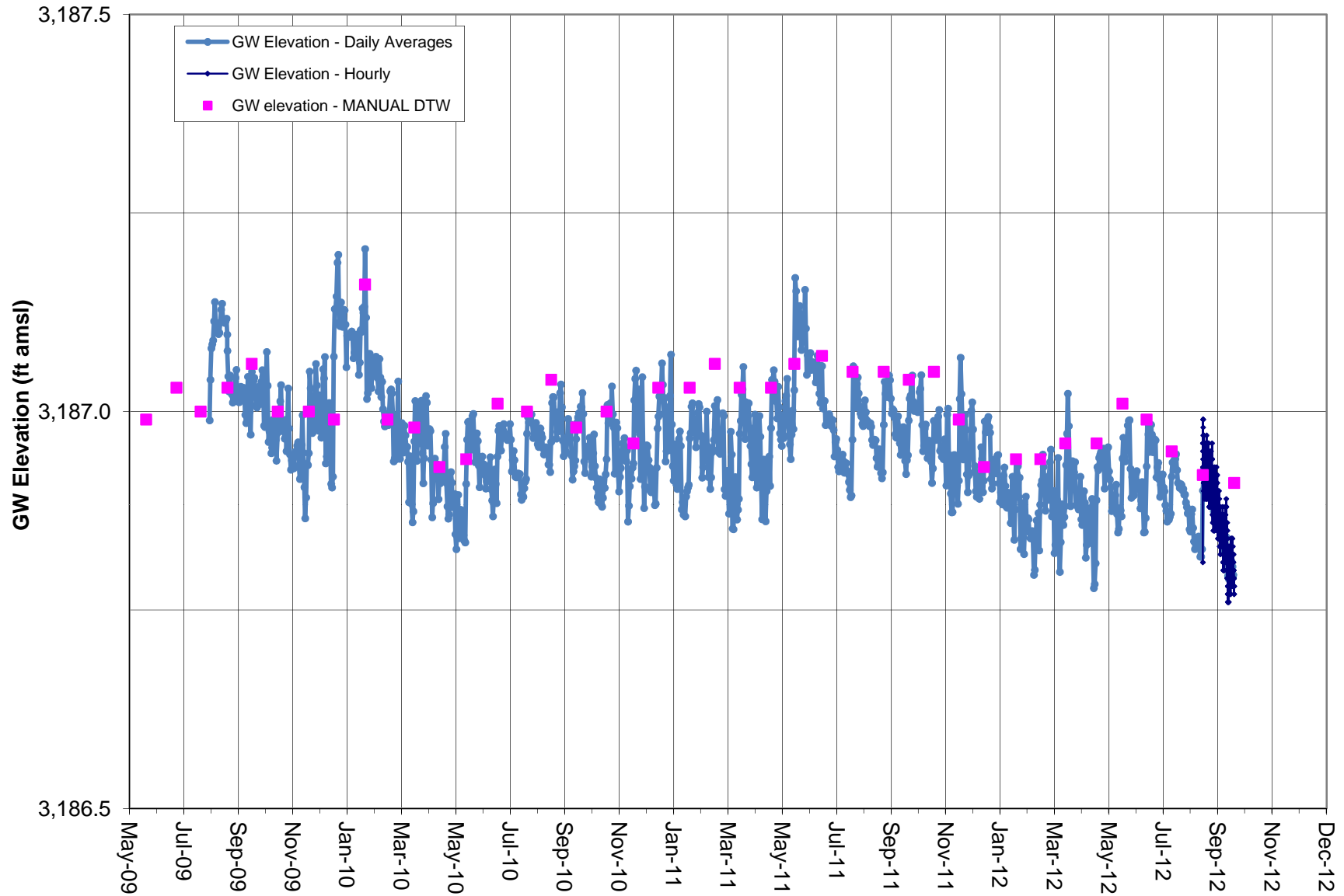
Note: Red Hill data gap from 6/17/11 to 7/20/11 due to transducer malfunction.
Coso Operating Co. initiated Hay Ranch Project pumping on 12/25/09.

GROUNDWATER ELEVATION DATA - Transducer RV140 - Lego Well



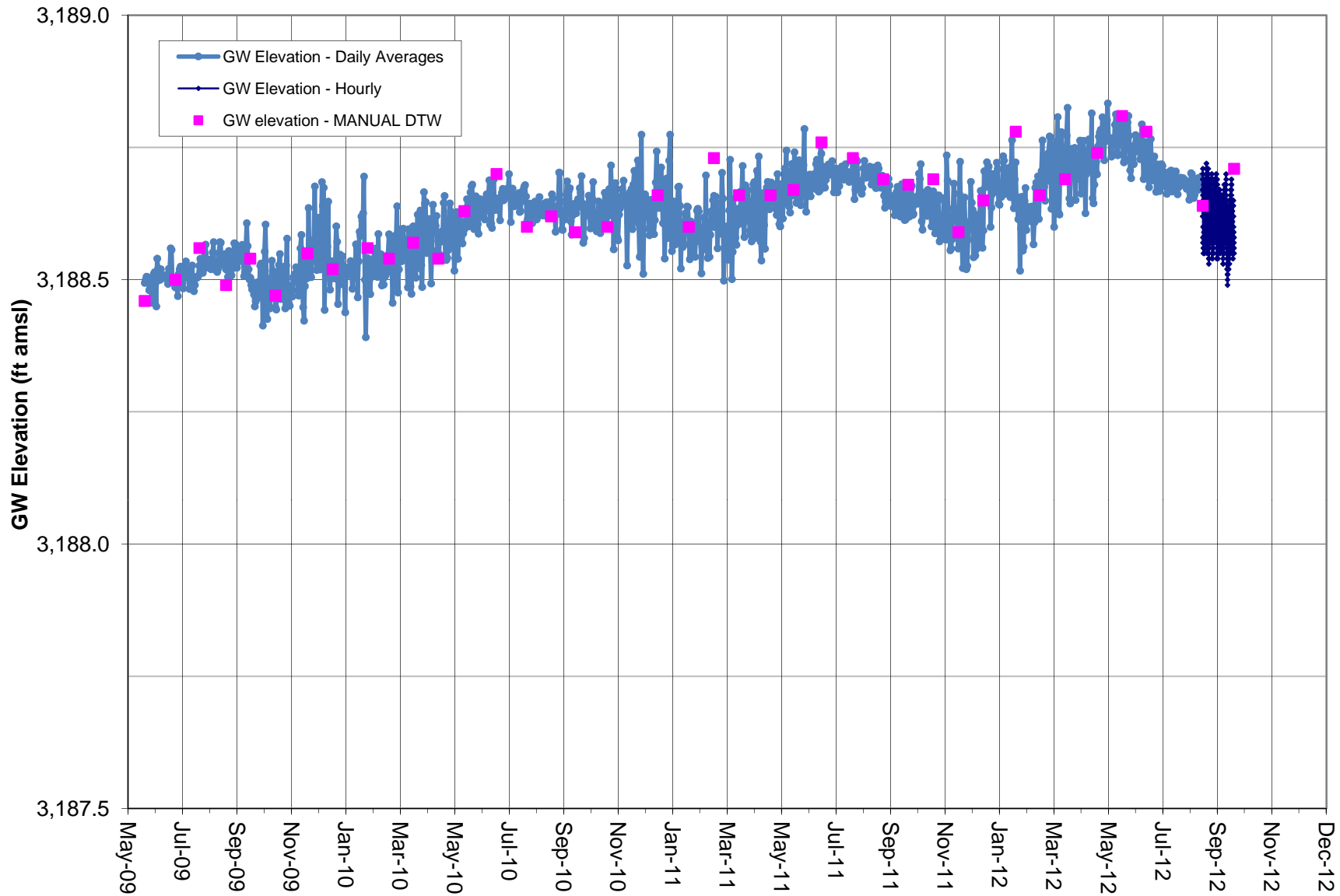
Note: Transducer data adjusted by BaroTroll and correlated to Manual DTW .
 Data from 10/17/09 is omitted as PT slipped less than 1 foot.
 Coso Operating Co. initiated Hay Ranch Project pumping on 12/25/09.

GROUNDWATER ELEVATION DATA - Transducer RV150 - Cinder Road Well



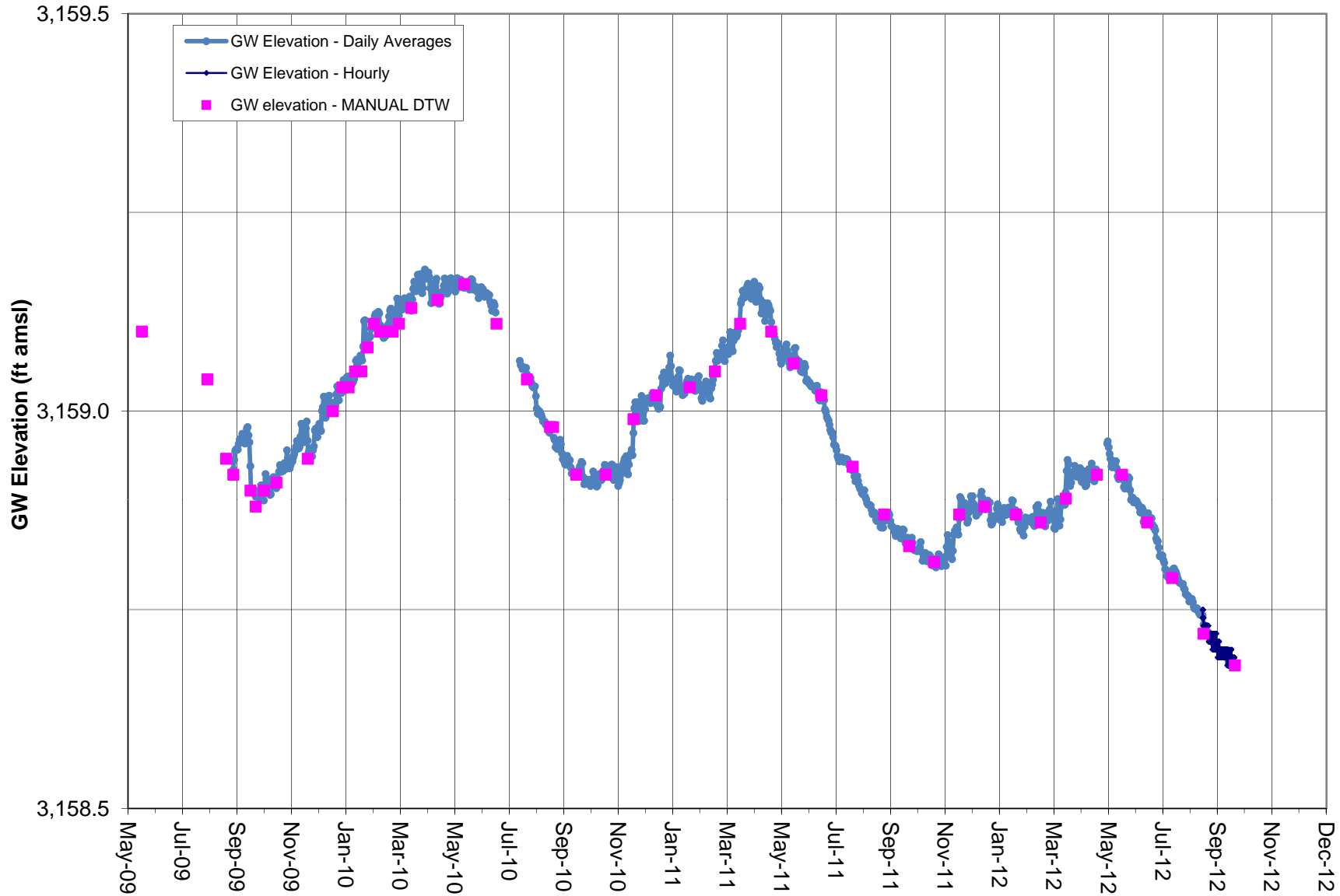
Note: Transducer data (absolute pressure) adjusted by data logged from BaroTroll and correlated to Manual DTW measurements.
Coso Operating Co. initiated Hay Ranch Project pumping on 12/25/09.

GROUNDWATER ELEVATION DATA - Transducer RV160 - 18-28 GTH Well



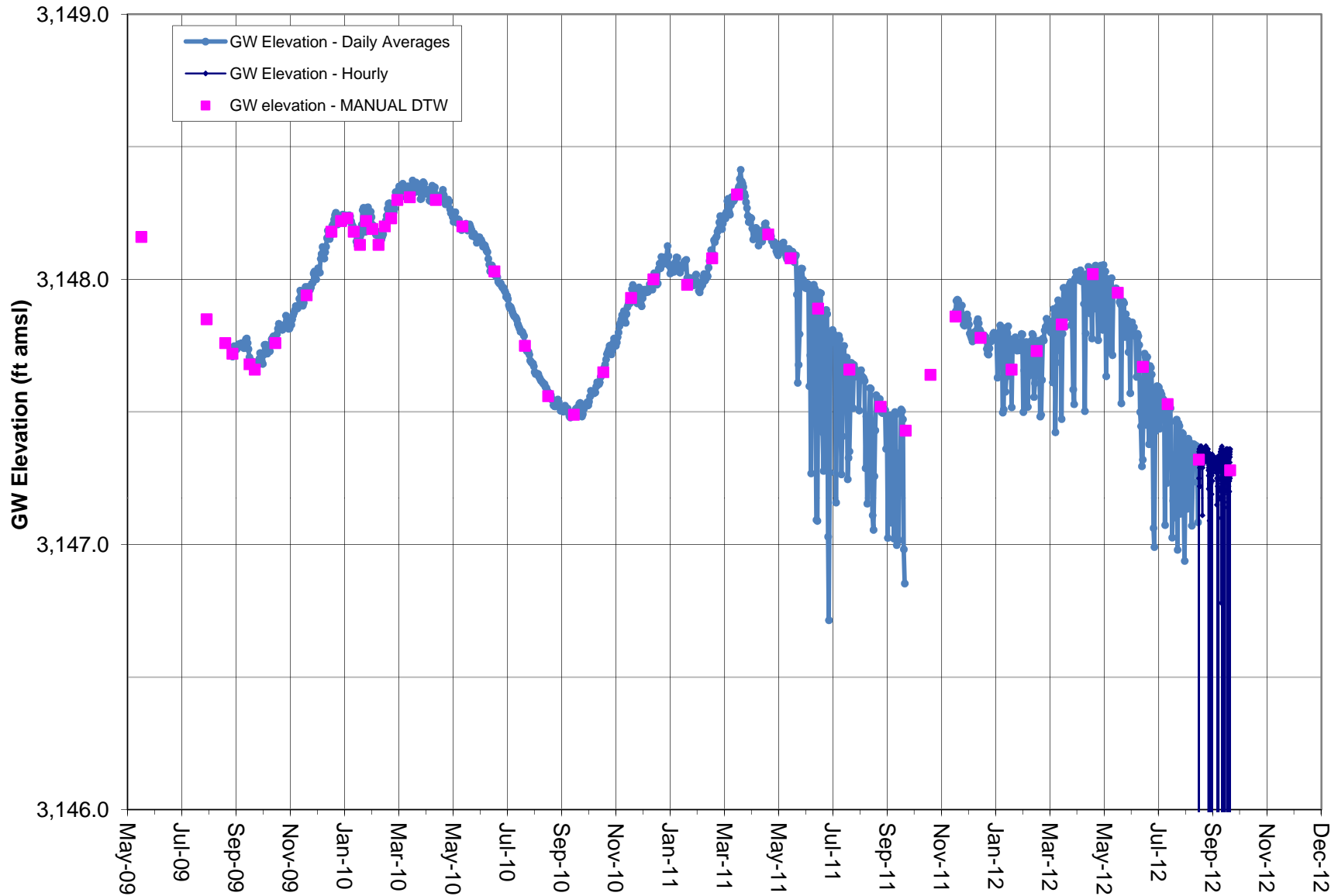
Note: Transducer data (absolute pressure) adjusted by data logged from BaroTroll and correlated to Manual DTW measurements.
Coso Operating Co. initiated Hay Ranch Project pumping on 12/25/09.

GROUNDWATER ELEVATION DATA - Transducer RV180 - Little Lake Ranch North Well



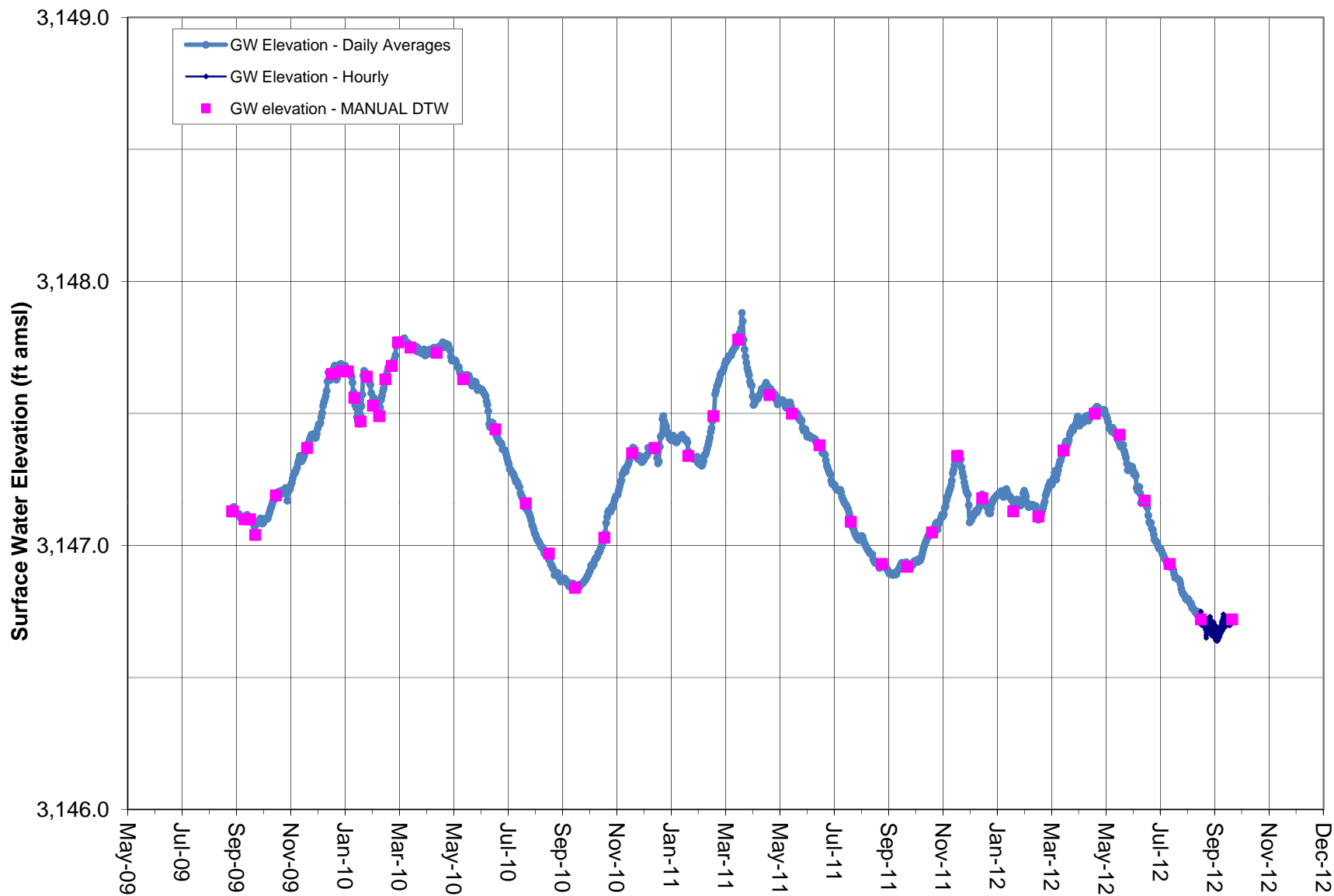
Note: Vented transducer data correlated to Manual DTW measurements.
 Coso Operating Co. initiated Hay Ranch Project pumping on 12/25/09.
 LLR North data gap from 6/18/10 to 7/13/10, and 4/18/12 to 4/30/12 due to transducer malfunction.

GROUNDWATER ELEVATION DATA - Transducer RV210 - Little Lake Ranch Dock Well



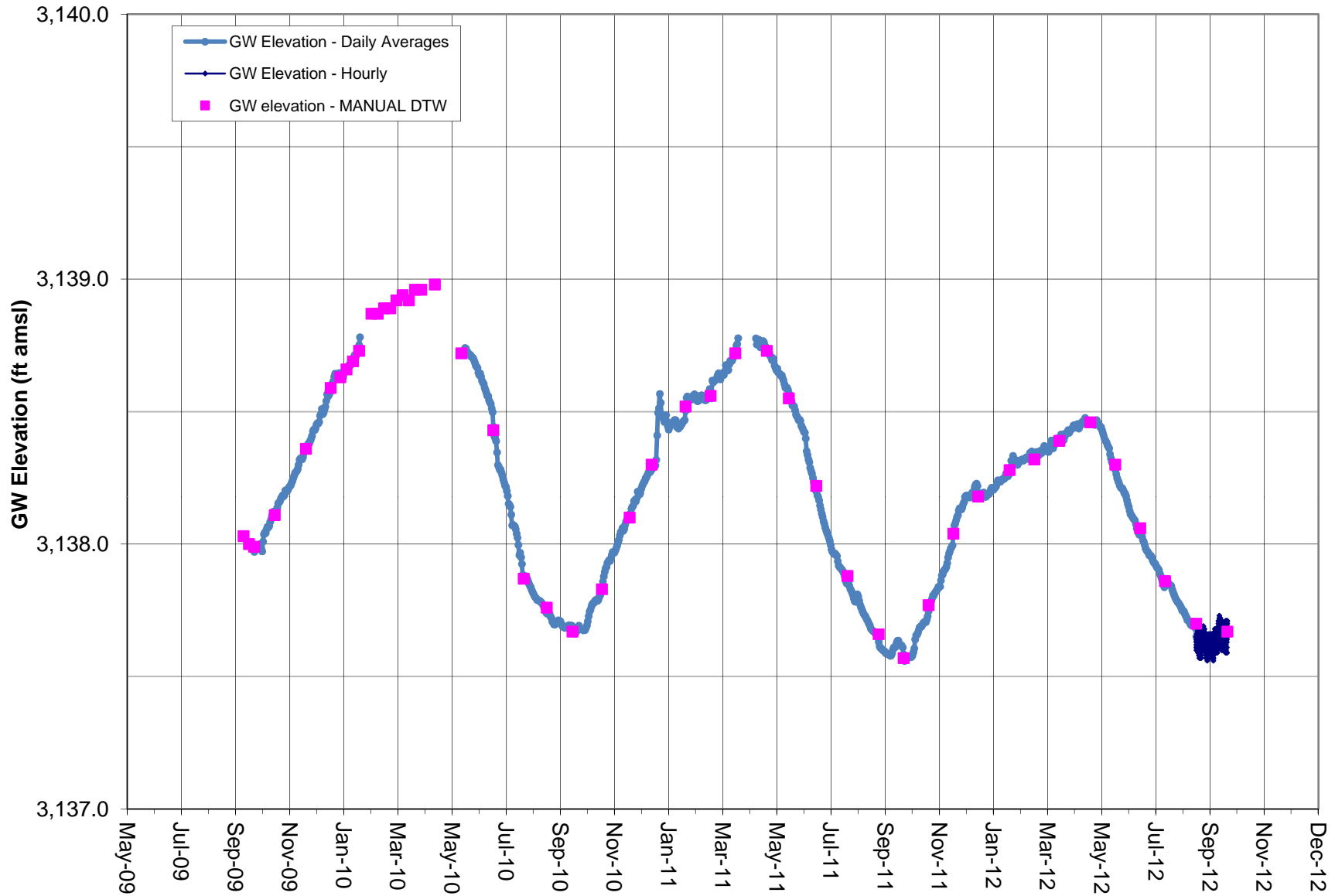
Note: Temporary GWE drops from 5/16/11 to date caused by active water management (pumping) of well by LLR staff.
LLR Dock data gap from 9/22/11 to 11/17/11 due to transducer malfunction.

GROUNDWATER ELEVATION DATA - Transducer RV220 - Little Lake Ranch Stilling Well (lake surface)



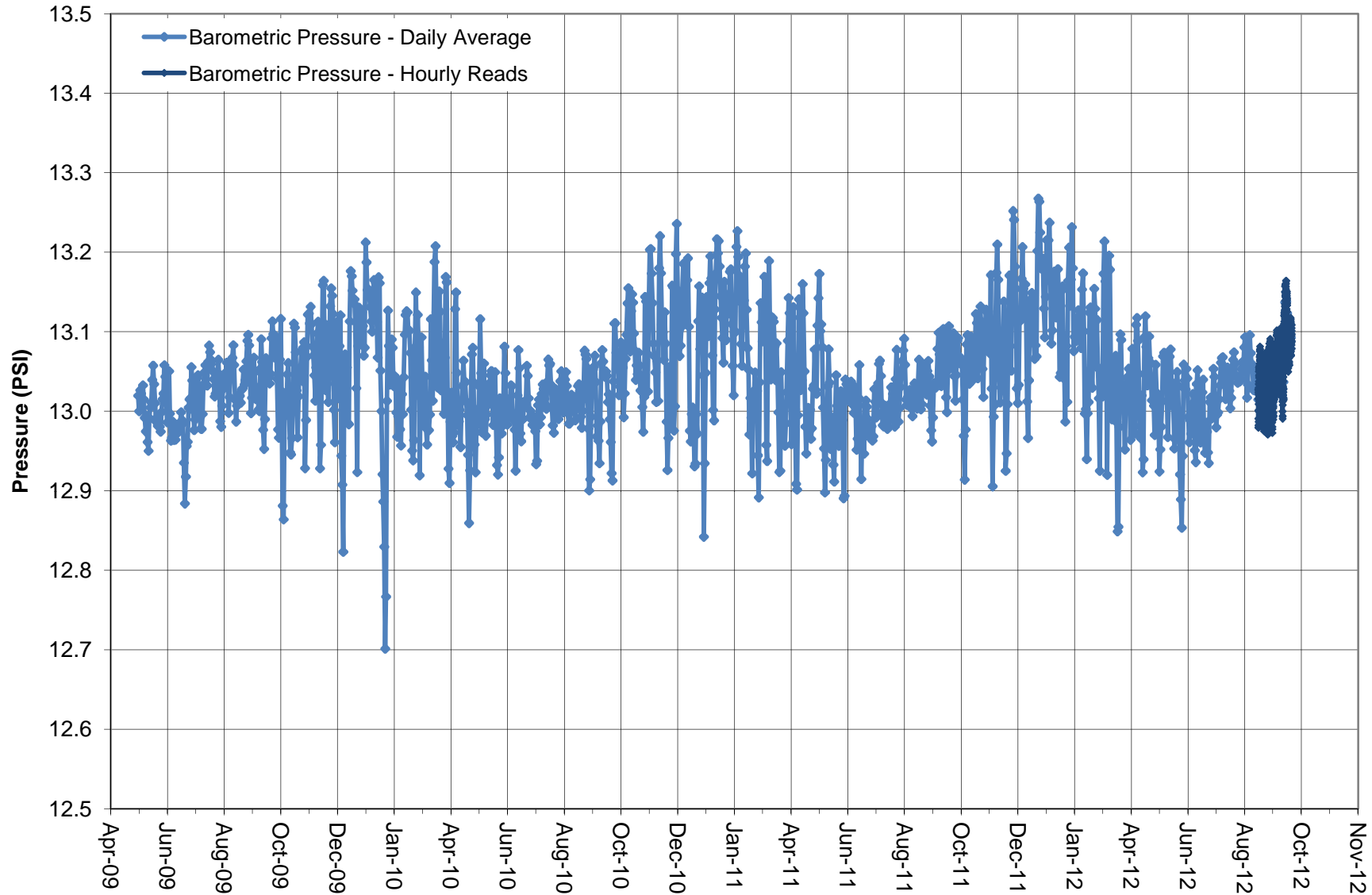
Note: Vented transducer data correlated to Manual DTW measurements. Represents surface water elevation of Little Lake. Coso Operating Co. initiated Hay Ranch Project pumping on 12/25/09.

GROUNDWATER ELEVATION DATA - Transducer RV260 - Little Lake Ranch Hotel Well



Note: Vented transducer data correlated to Manual DTW measurements.
 Coso Operating Co. initiated Hay Ranch Project pumping on 12/25/09.
 Transducer reads occurring when groundwater level is below top of well casing.

BAROMETRIC PRESSURE as Logged by BaroTroll



Note: BaroTroll located in well casing of well HR-2B. Records atmospheric pressure.
Significant pressure dip in January 2010 caused by large storm.