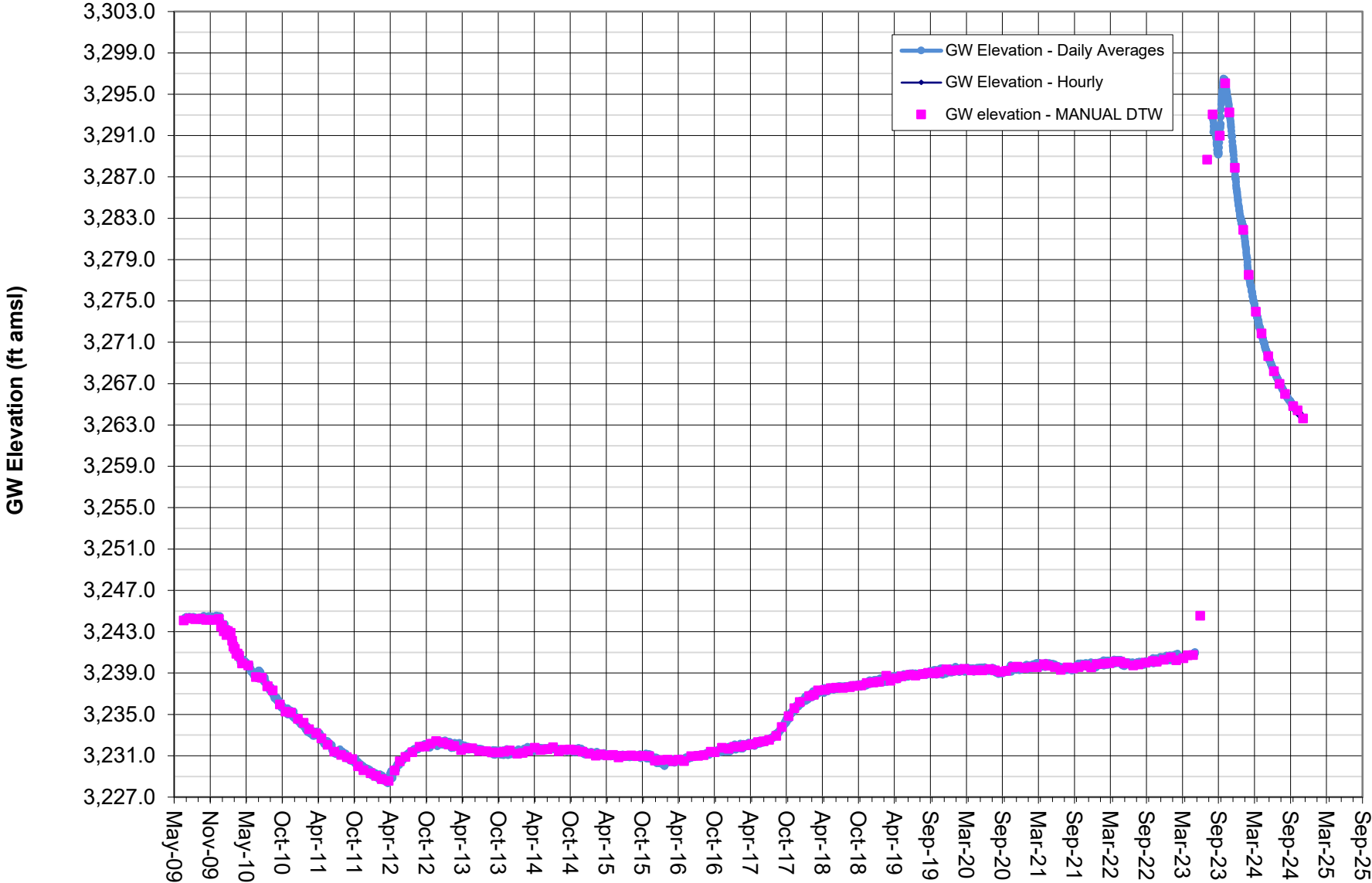
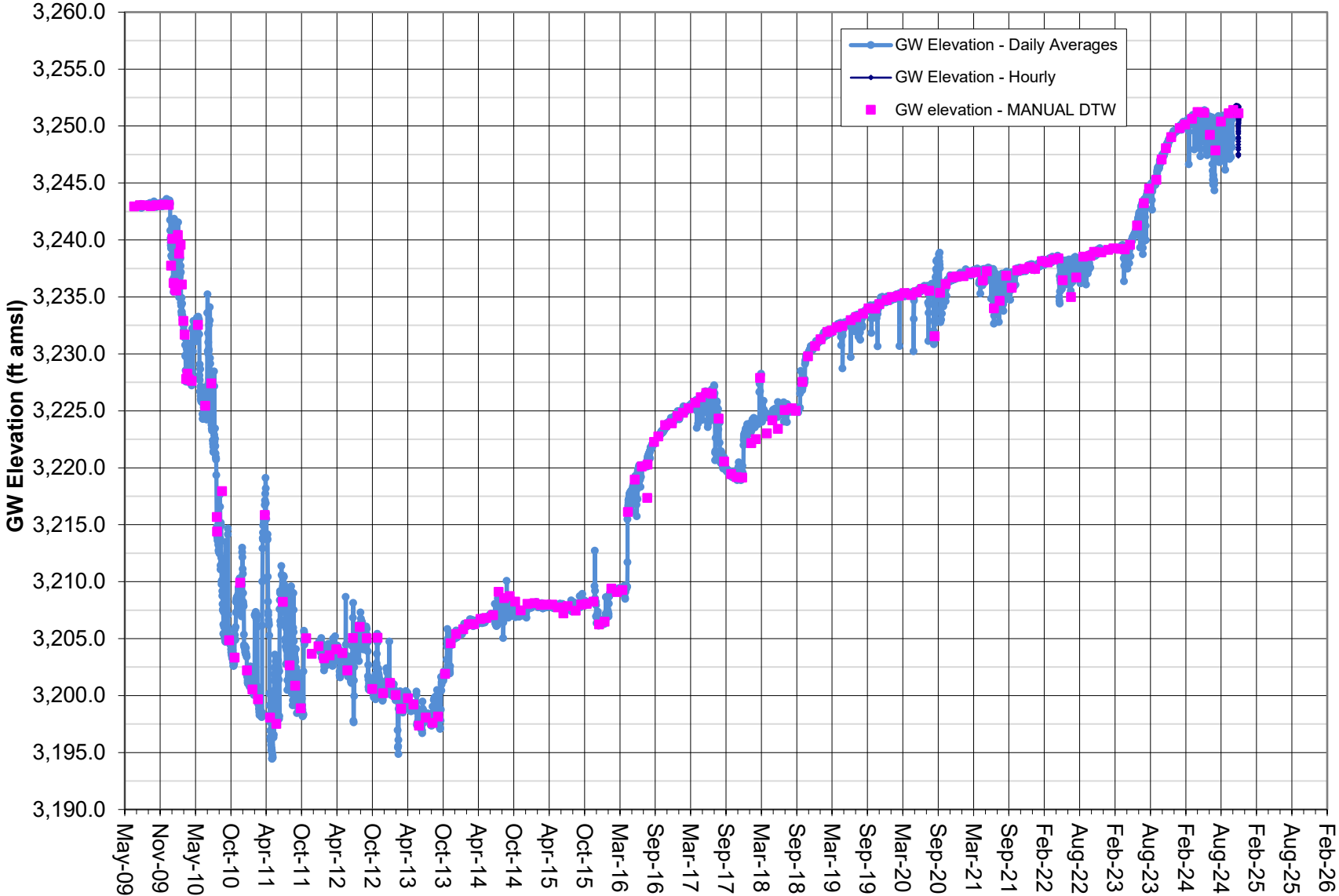


GROUNDWATER ELEVATION DATA - Transducer RV060 - HR 1A Well



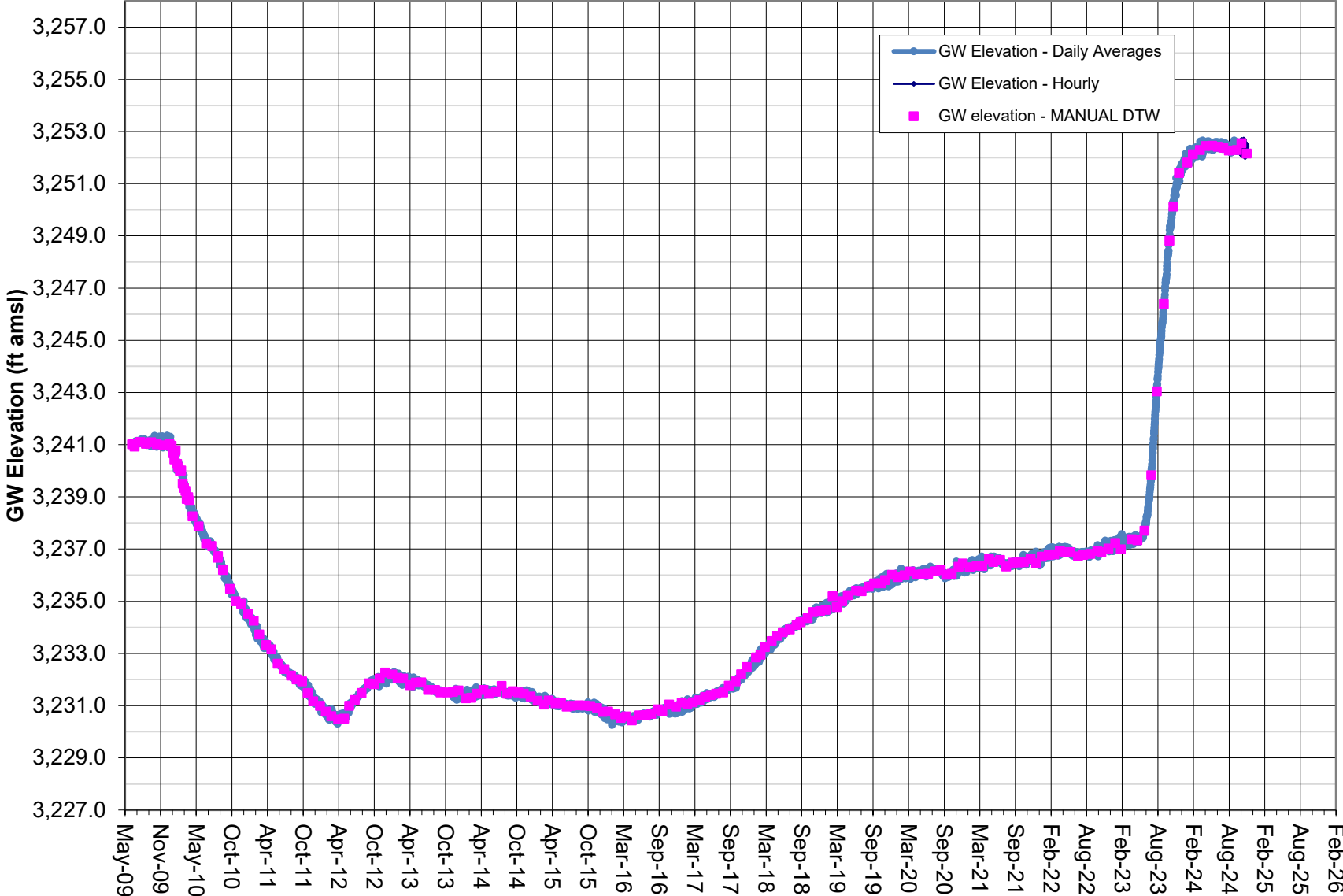
Note: Screened interval 170-260 feet.
Coso Operating Co. initiated Hay Ranch Project pumping on 12/25/09.
HR1A data gaps due to transducer malfunction. Transducer replaced 8/16/23

GROUNDWATER ELEVATION DATA - Transducer RV061 - HR 1B Well



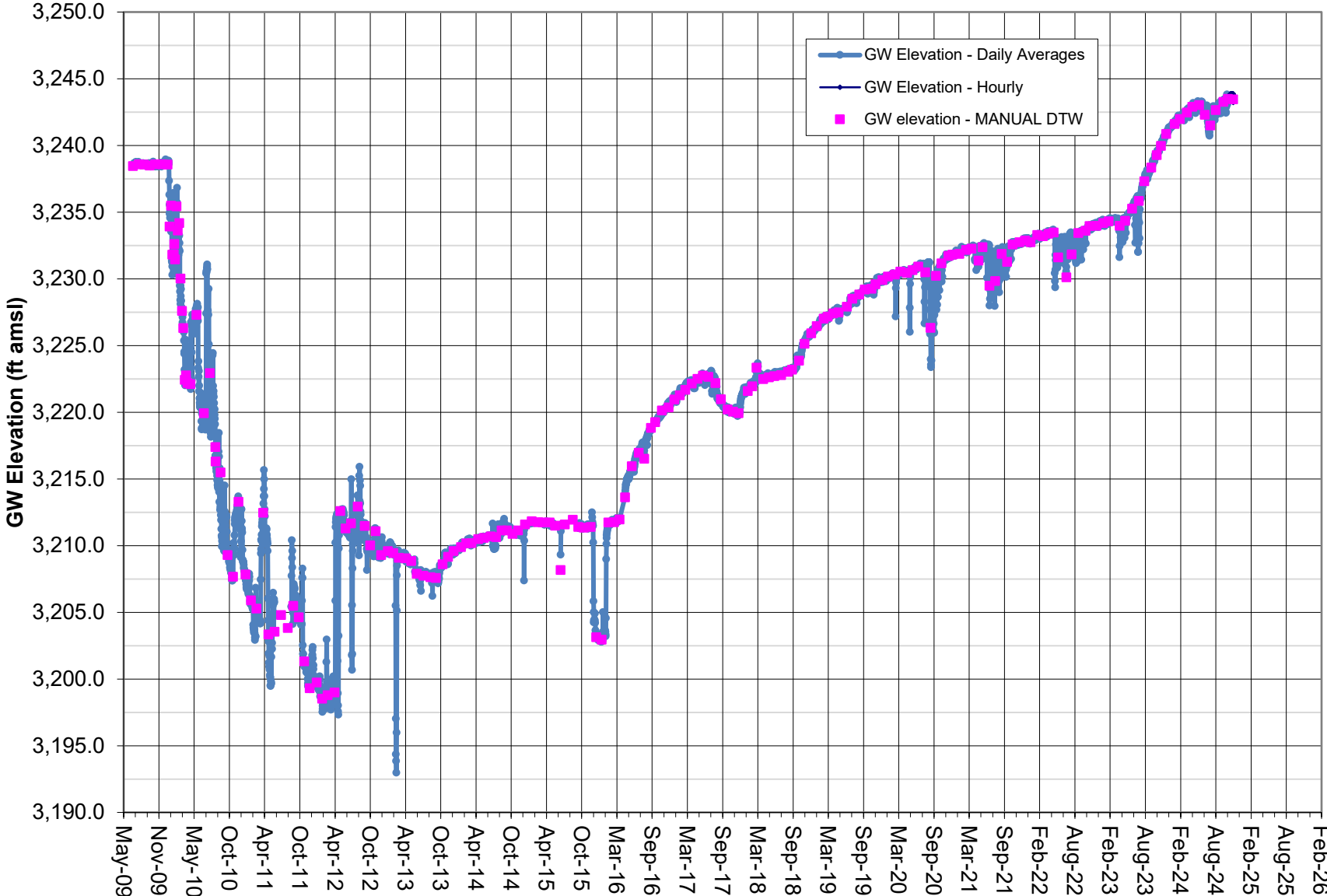
Note: Screened interval 490-540 feet.
Transducer data (absolute pressure) adjusted by data logged from BaroTroll and correlated to Manual DTW measurements.
Data gaps are due to transducer malfunction.

GROUNDWATER ELEVATION DATA - Transducer RV080 - HR 2A Well



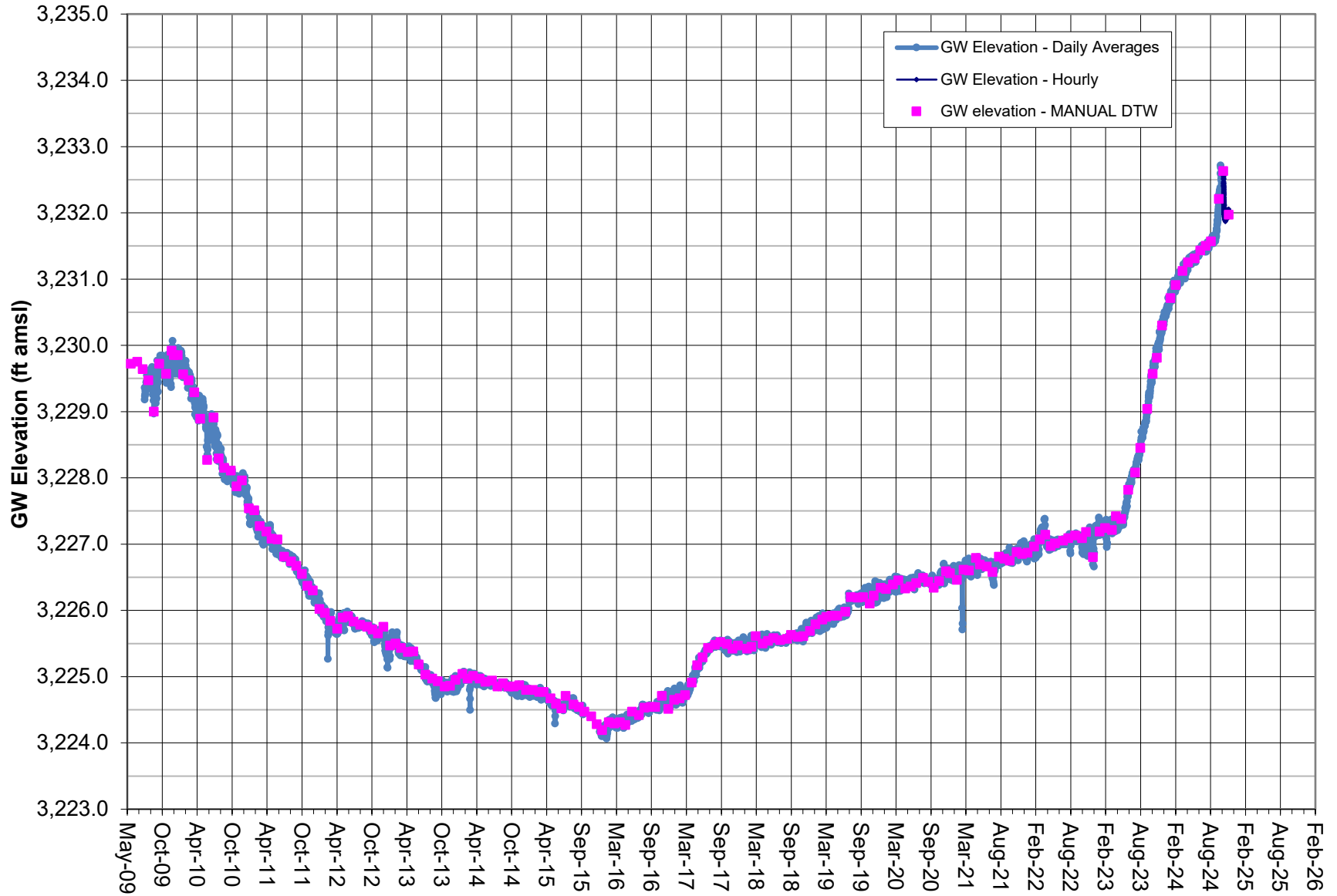
Note: Screened interval 180-300 feet.
Coso Operating Co. initiated Hay Ranch Project pumping on 12/25/09.

GROUNDWATER ELEVATION DATA - Transducer RV081 - HR 2B Well



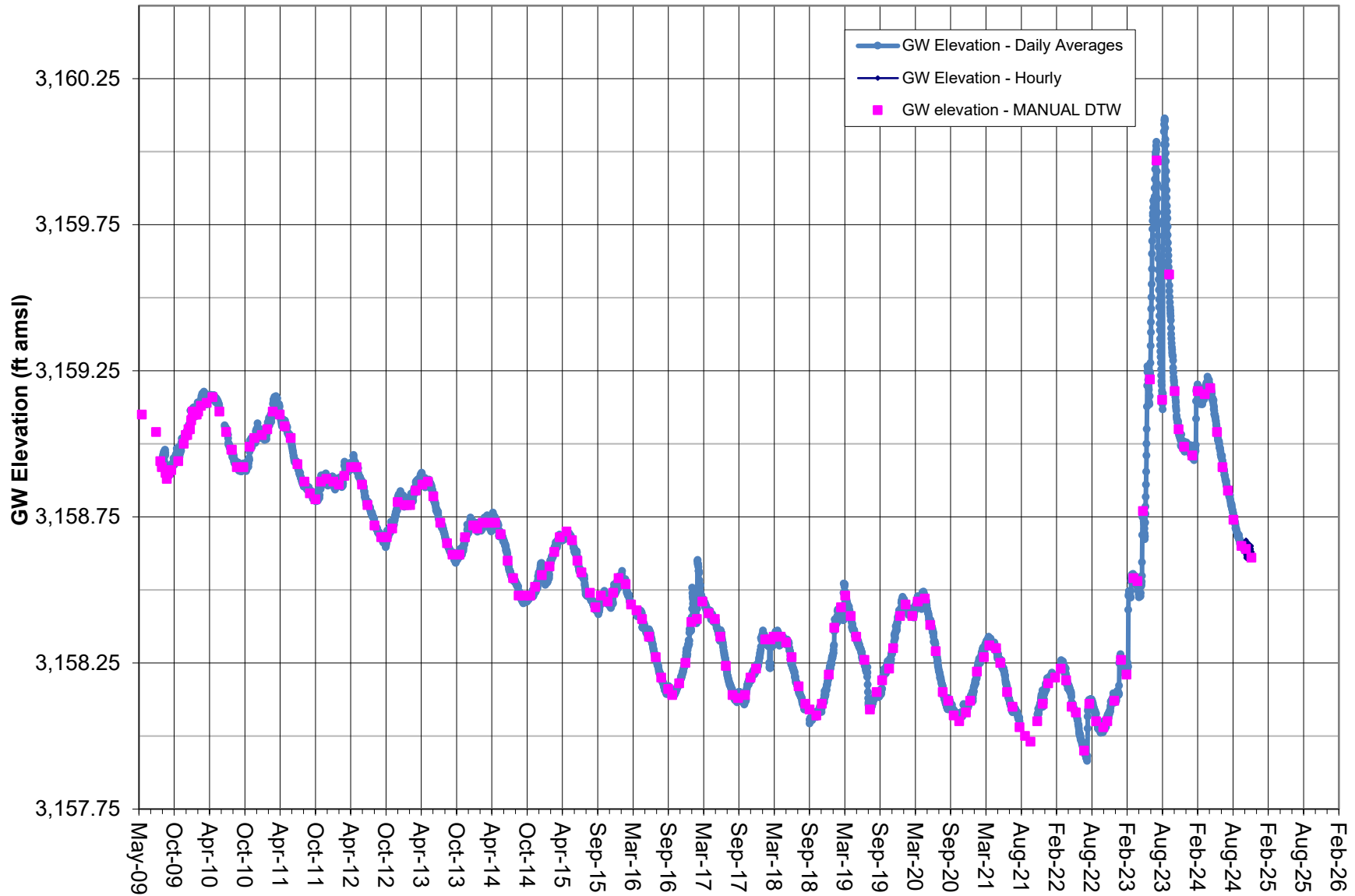
Note: Screened interval 519-584 feet.
Coso Operating Co. initiated Hay Ranch Project pumping on 12/25/09.

GROUNDWATER ELEVATION DATA - Transducer RV100- Coso Junction Store#1 Well



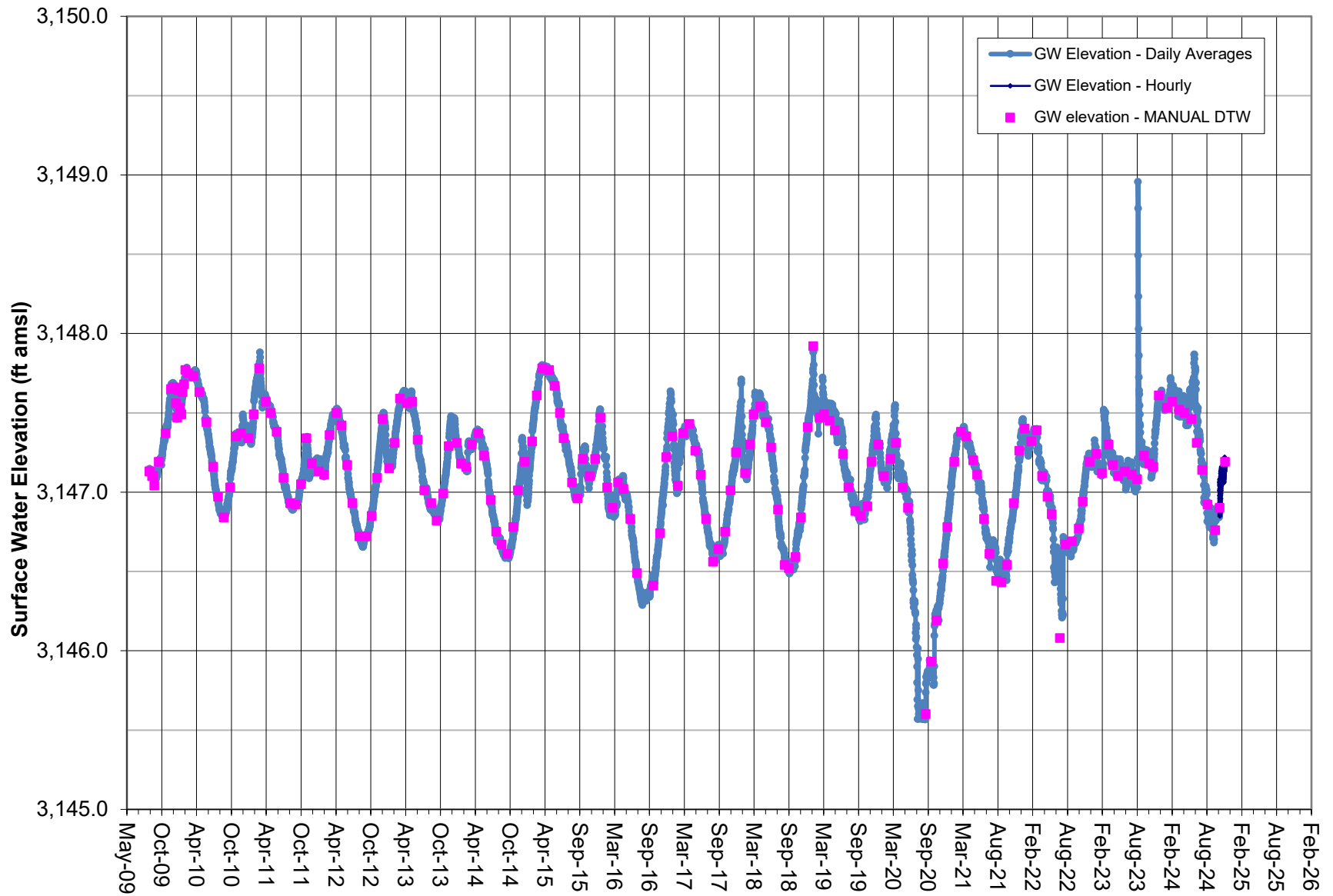
Note: Transducer data adjusted by data logged from BaroTroll and correlated to Manual DTW.
Coso Operating Co. initiated Hay Ranch Project pumping on 12/25/09.

GROUNDWATER ELEVATION DATA - Transducer RV180 - Little Lake Ranch North Well



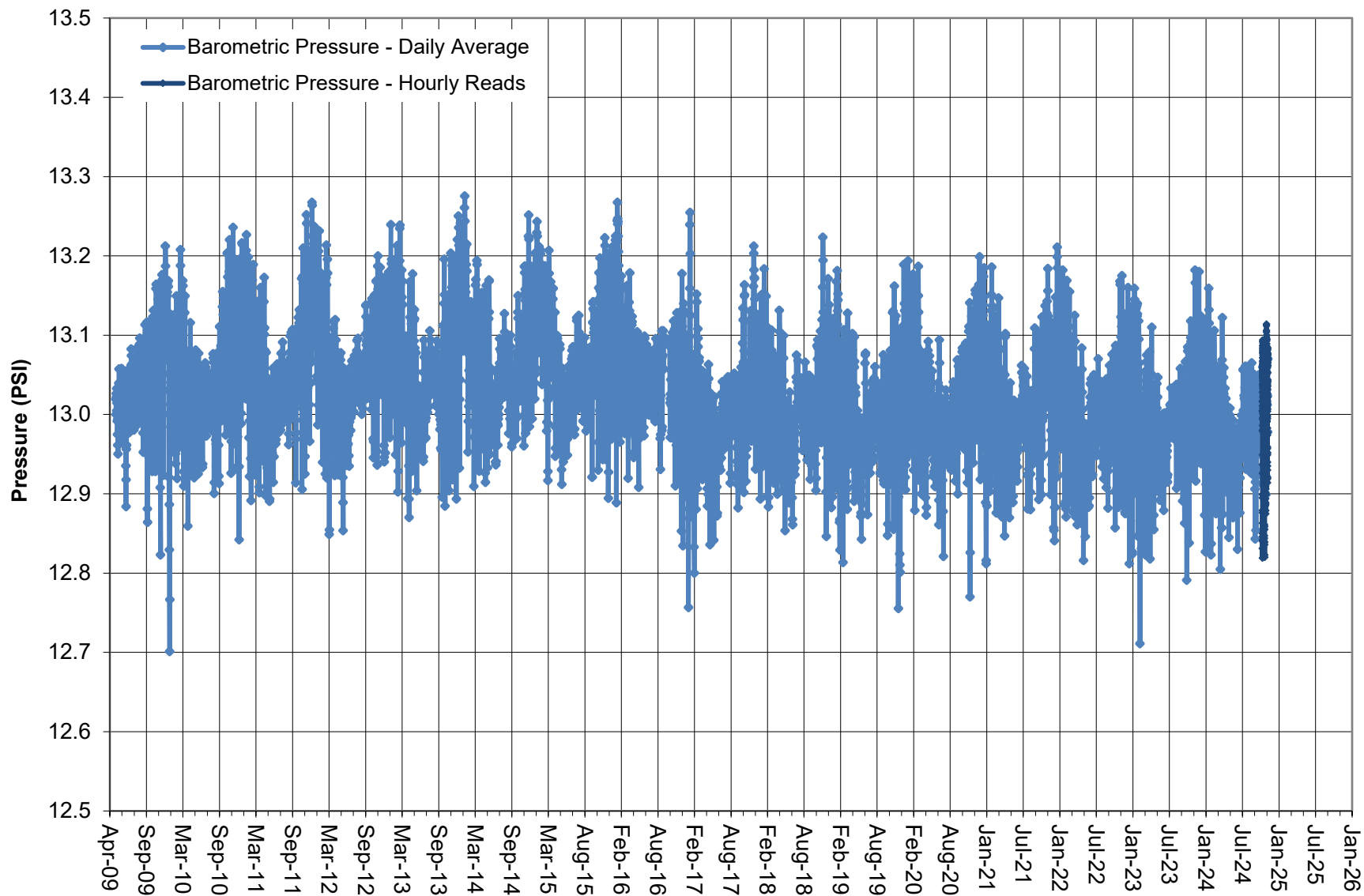
Note: Vented transducer data correlated to Manual DTW measurements.
 Coso Operating Co. initiated Hay Ranch Project pumping on 12/25/09.
 Data gaps due to transducer malfunction.

SURFACE WATER ELEVATION DATA - Transducer RV220 - Little Lake Ranch Stilling Well (Lake Surface)



Note: Vented transducer data correlated to Manual DTW measurements.
Represents surface water elevation of Little Lake.

BAROMETRIC PRESSURE as Logged by BaroTroll



Note: BaroTroll located in well casing of well HR-2B.
Used to adjust pressure readings in non-vented transducers.