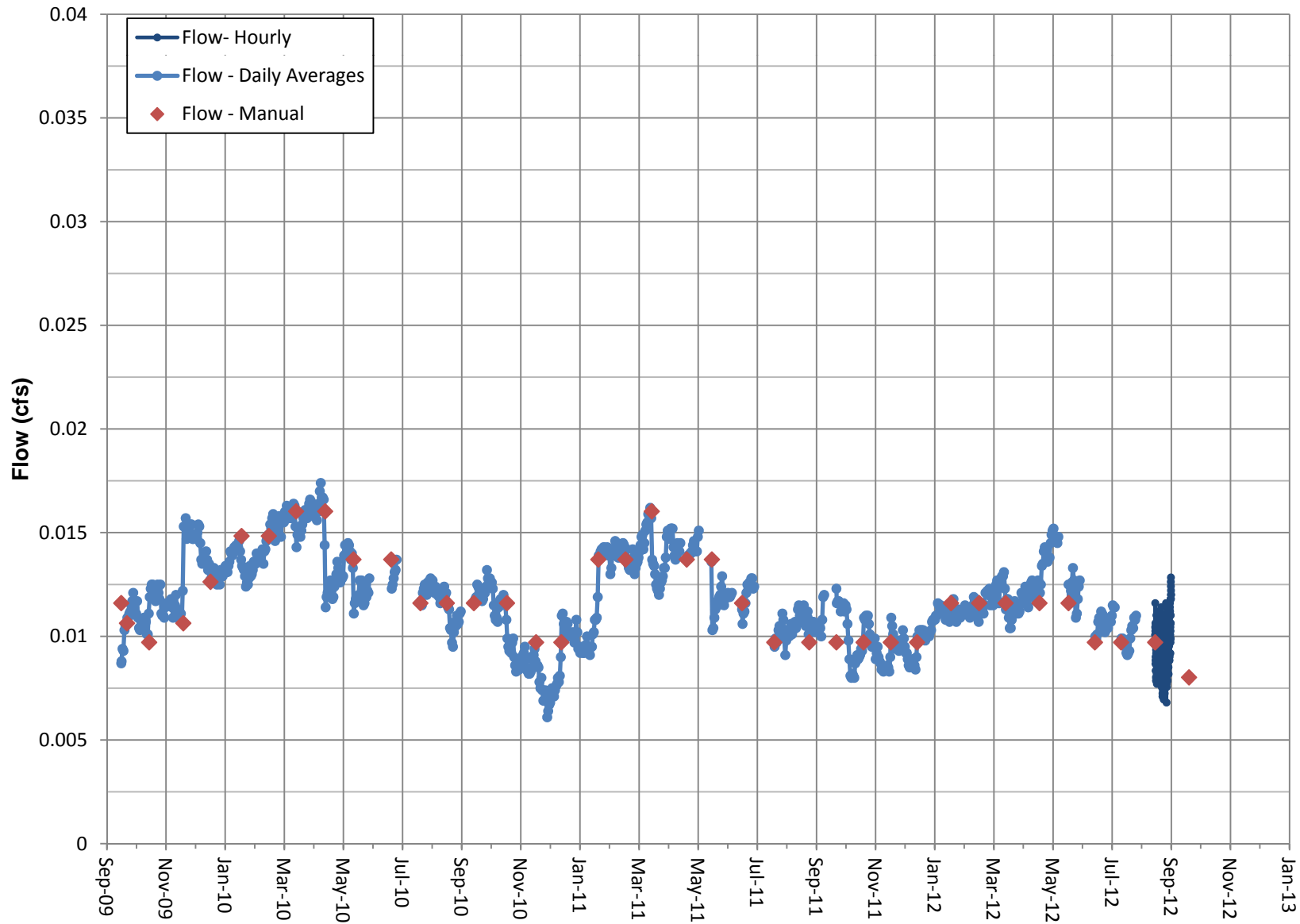
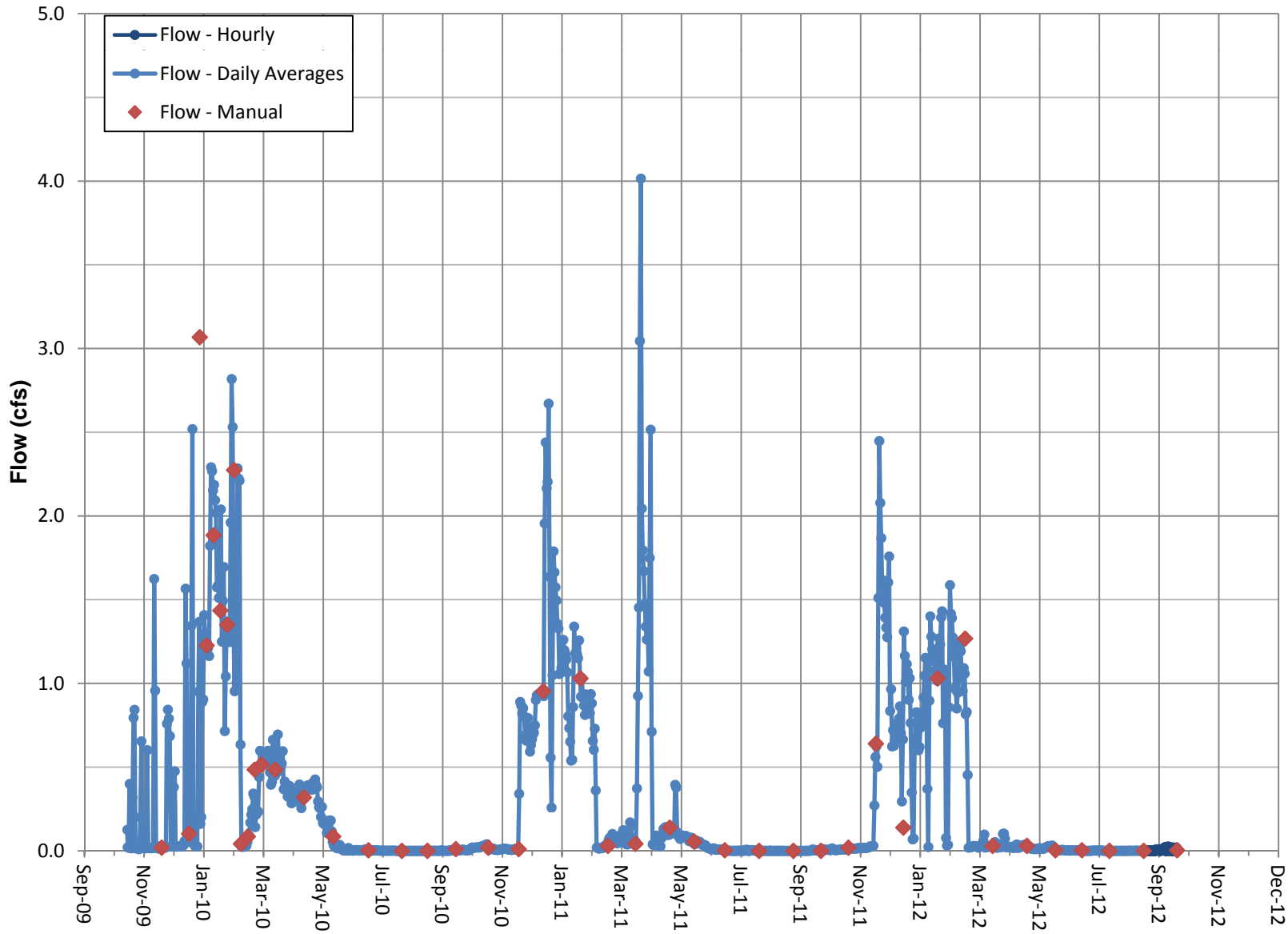


### Surface Flow- Transducer RV 112- Davis Ranch South Flow

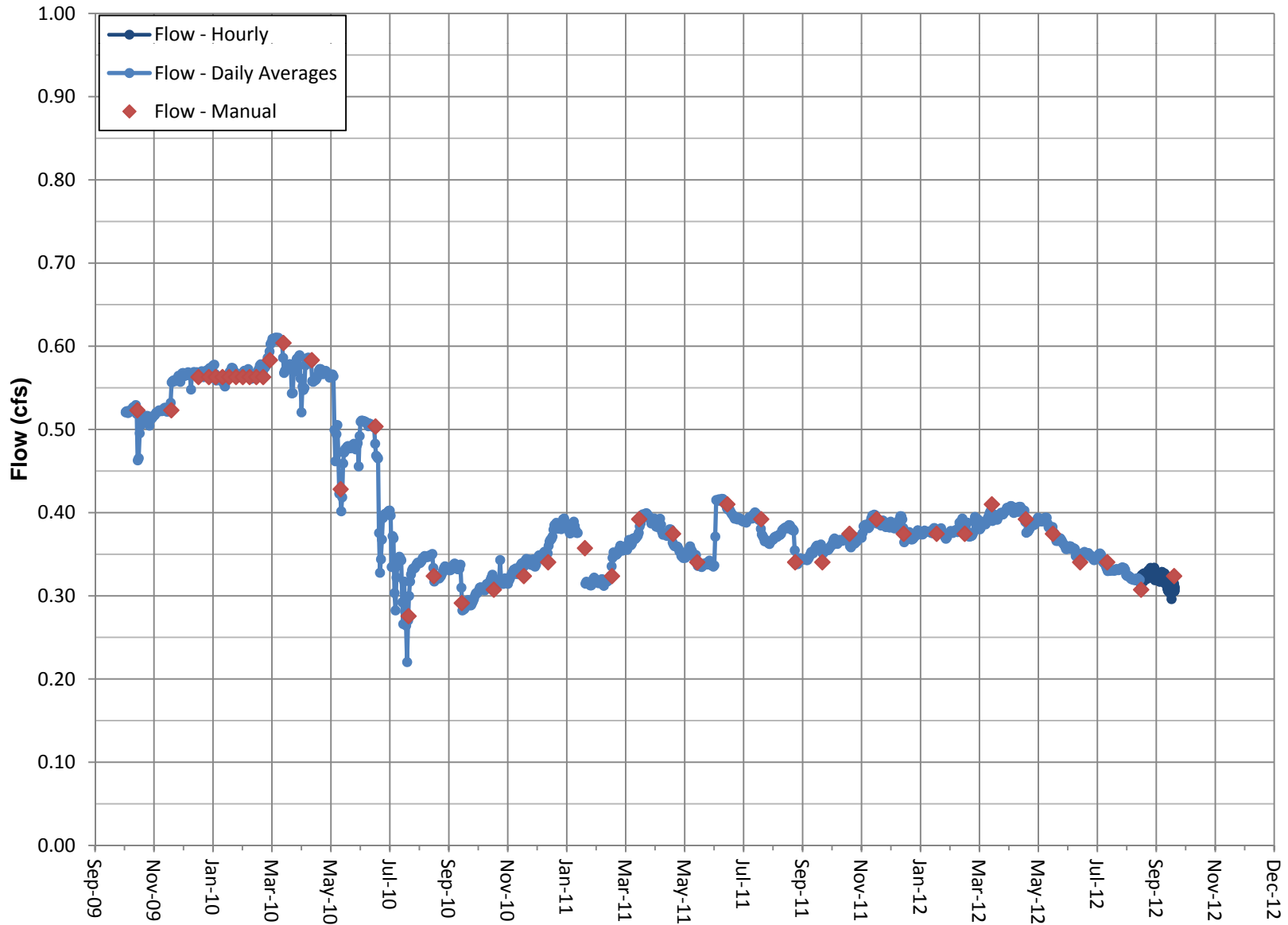


### Surface Flow- Transducer RV 230- Little Lake Outflow



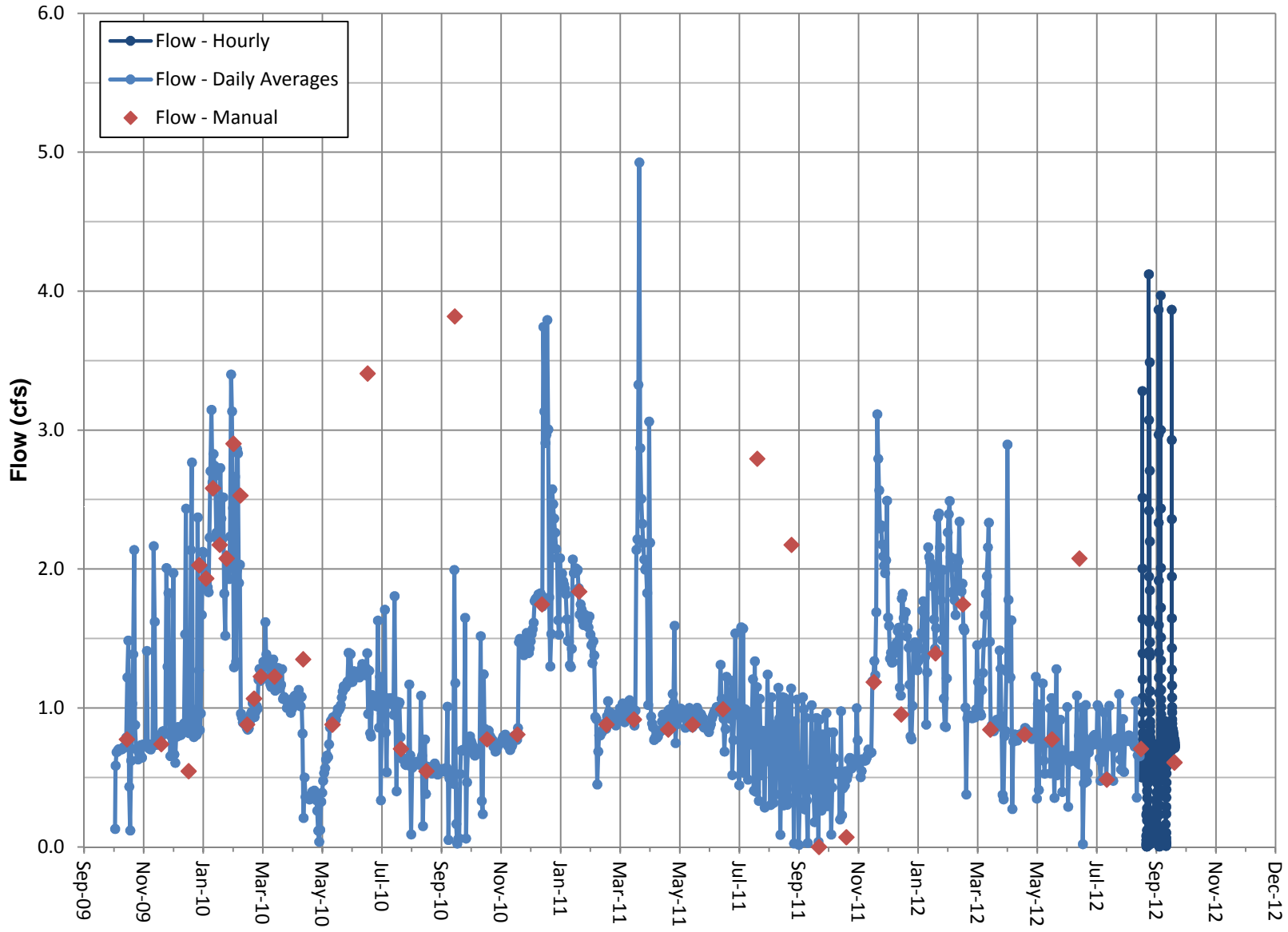
Note: Flows through Little Lake Outflow are influenced by natural and water management processes at Little Lakes Ranch. Coso Operating Co. initiated Hay Ranch Project pumping on 12/25/09.

### Surface Flow- Transducer RV 240- Coso Springs



Note: Coso Springs is an artesian spring.  
 Data gap from 1/13/11 to 1/20/11 due to transducer malfunction.  
 LLR water management occurred in June 2011.

### Surface Flow- Transducer RV 245- North Culvert



Note: Flows through North Culvert are influenced by natural and water management processes at Little Lakes Ranch. Coso Operating Co. initiated Hay Ranch Project pumping on 12/25/09.