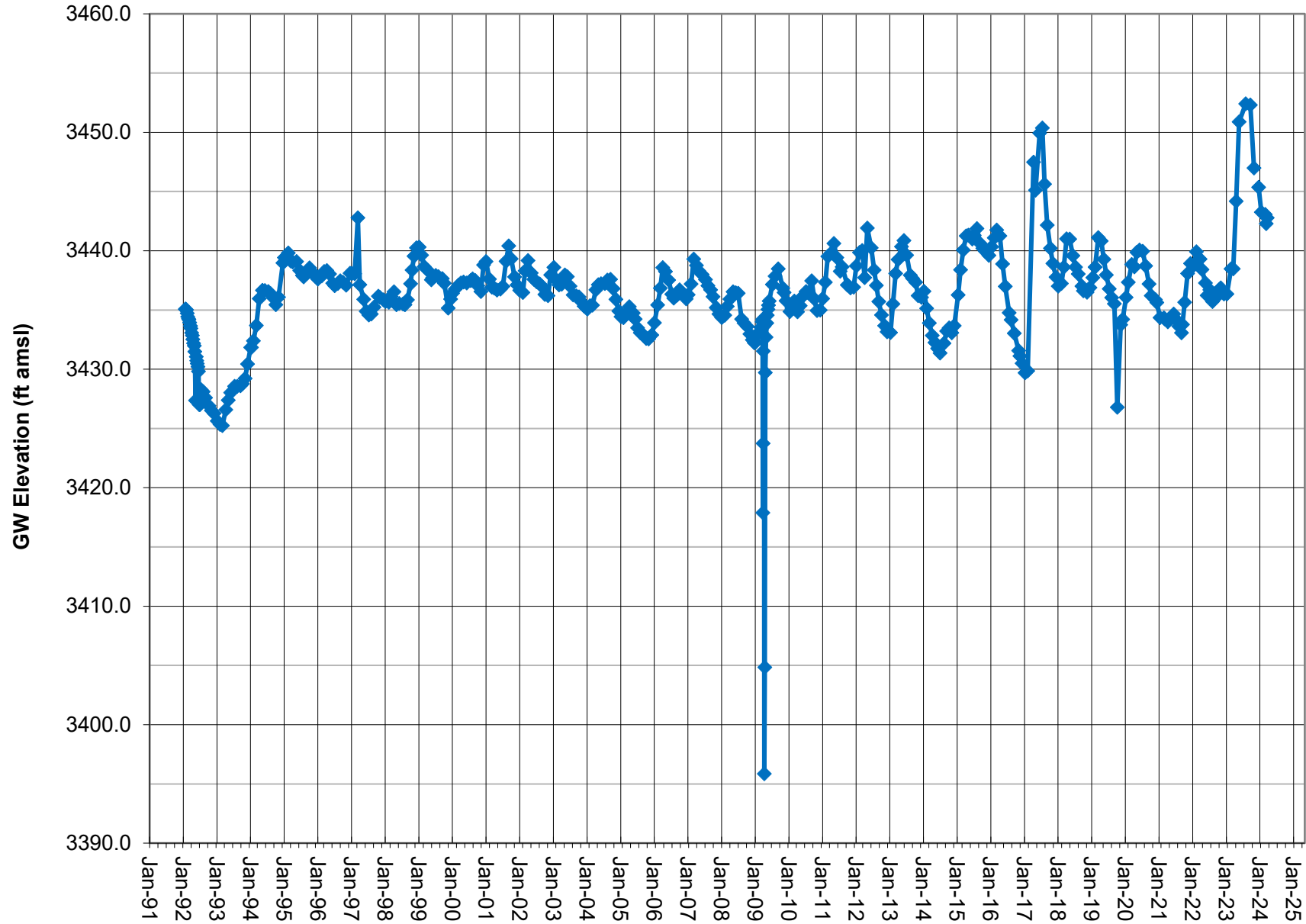
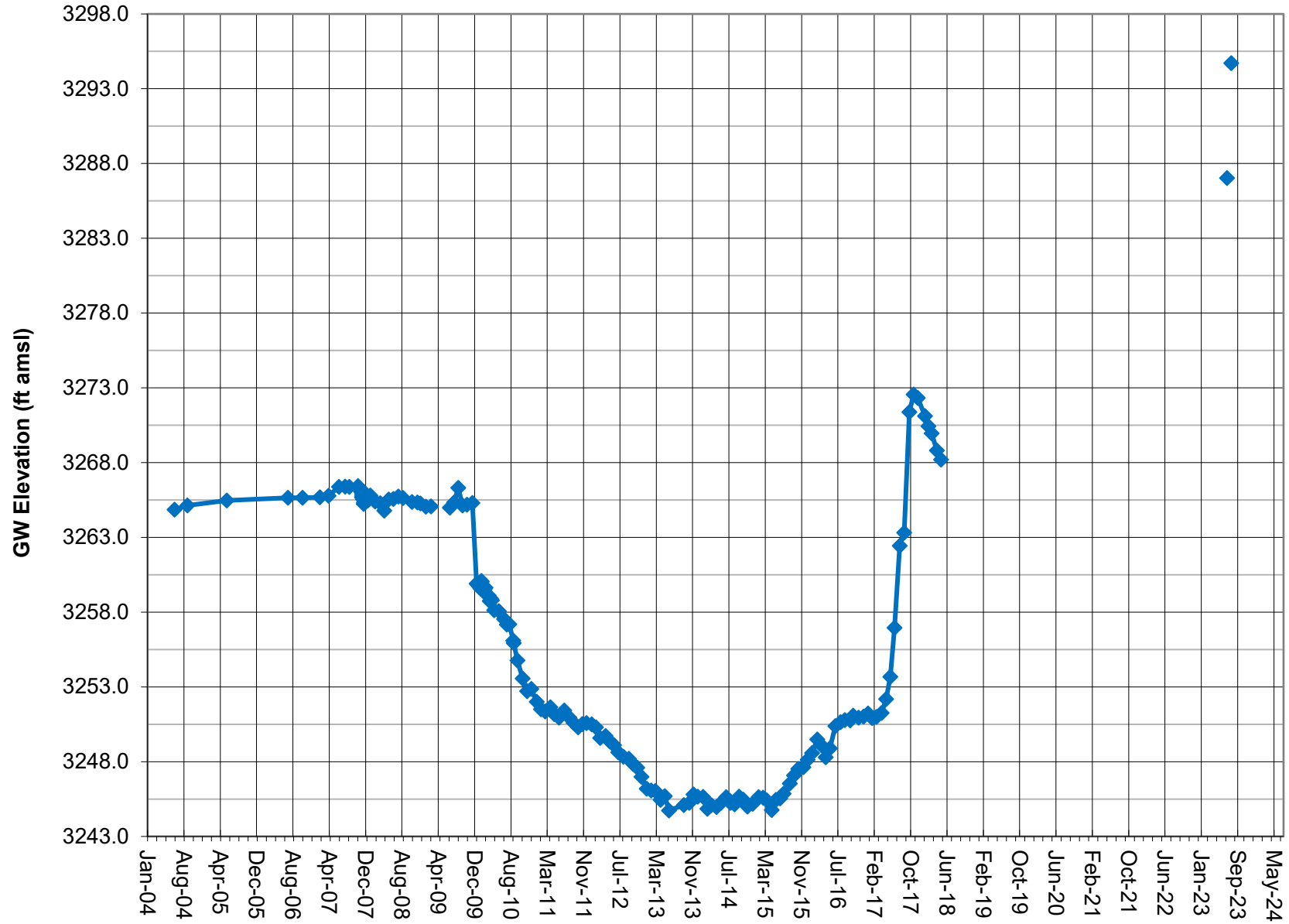


### GROUNDWATER ELEVATION DATA - Long-Term (Manual) RV020 - LADWP 816 Well



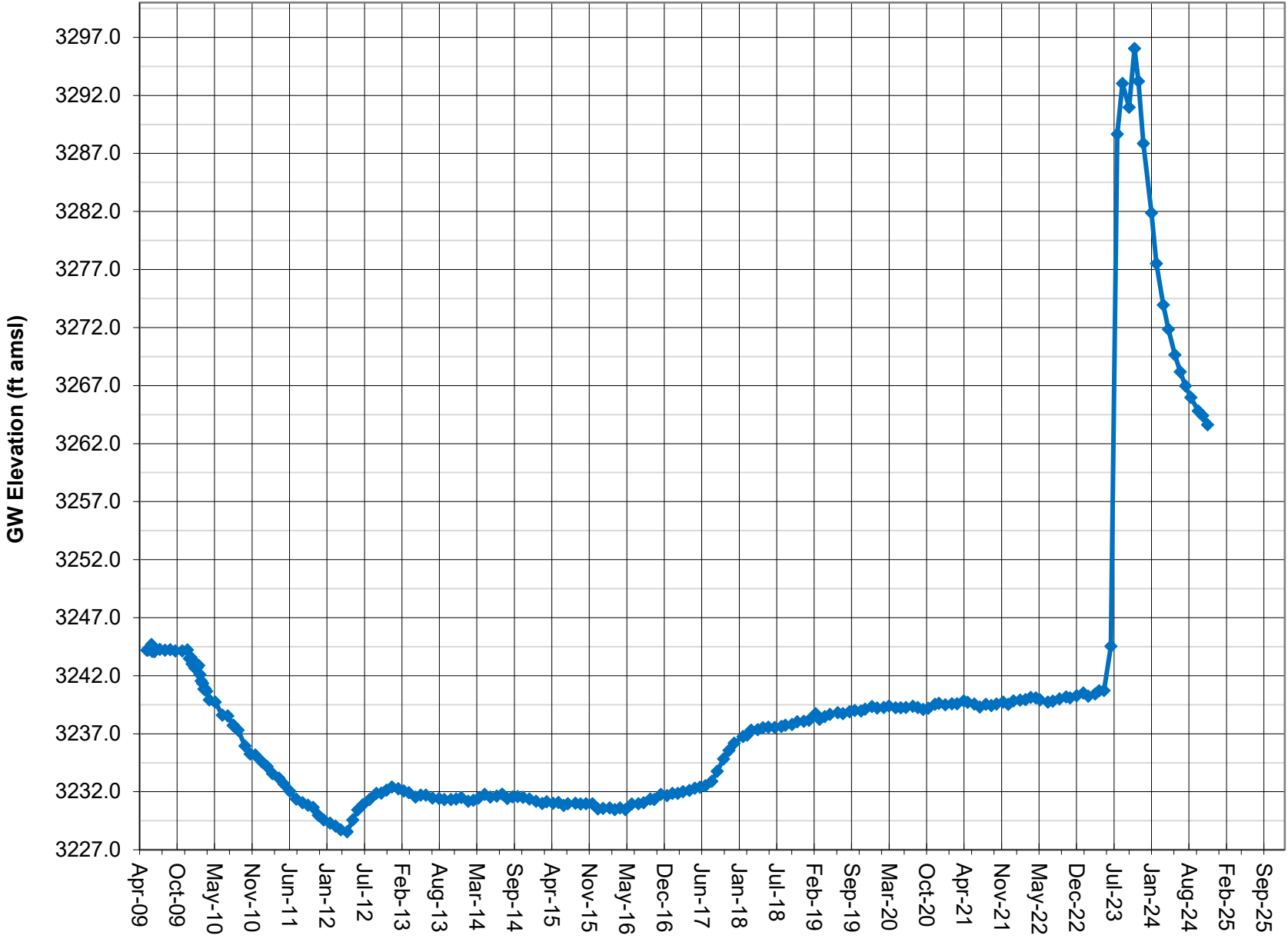
Note: Groundwater elevation data based on manual depth-to-water measurements.  
LADWP conducted a groundwater pump test on a nearby well in the first quarter 2009.  
Coso Operating Co. initiated Hay Ranch Project pumping on 12/25/09.

# GROUNDWATER ELEVATION DATA - Long-Term (Manual) RV030 - Cal Pumice Well



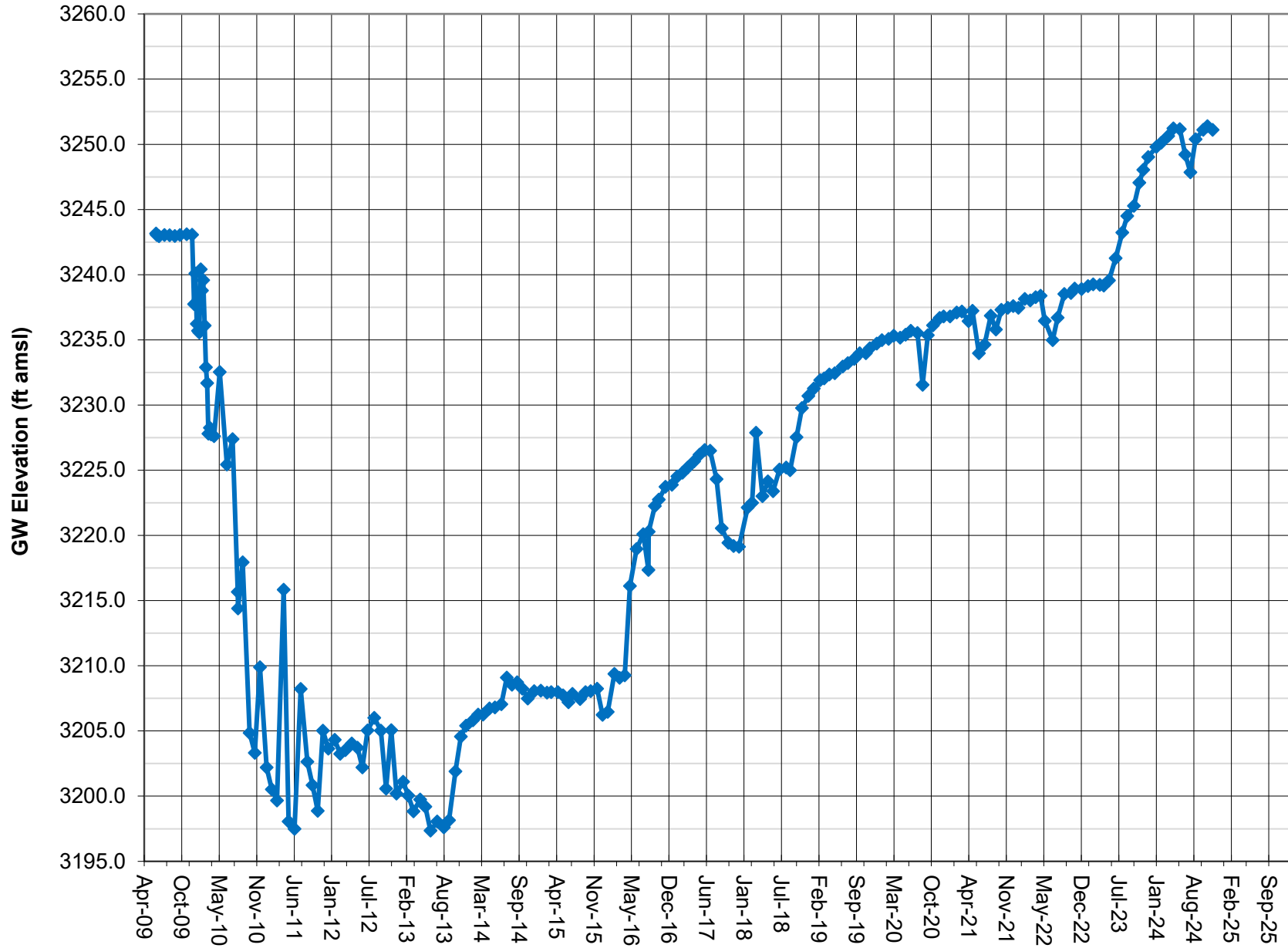
Note: A data gap exists in 2009 during a pump test on a nearby well.  
Coso Operating Co. initiated Hay Ranch Project pumping on 12/25/09.  
Inaccessible in Sept. 2023. due to lock cut off and replaced with LADWP lock.

**GROUNDWATER ELEVATION DATA - Long-Term (Manual)**  
**RV060 - Hay Ranch 1A Well**



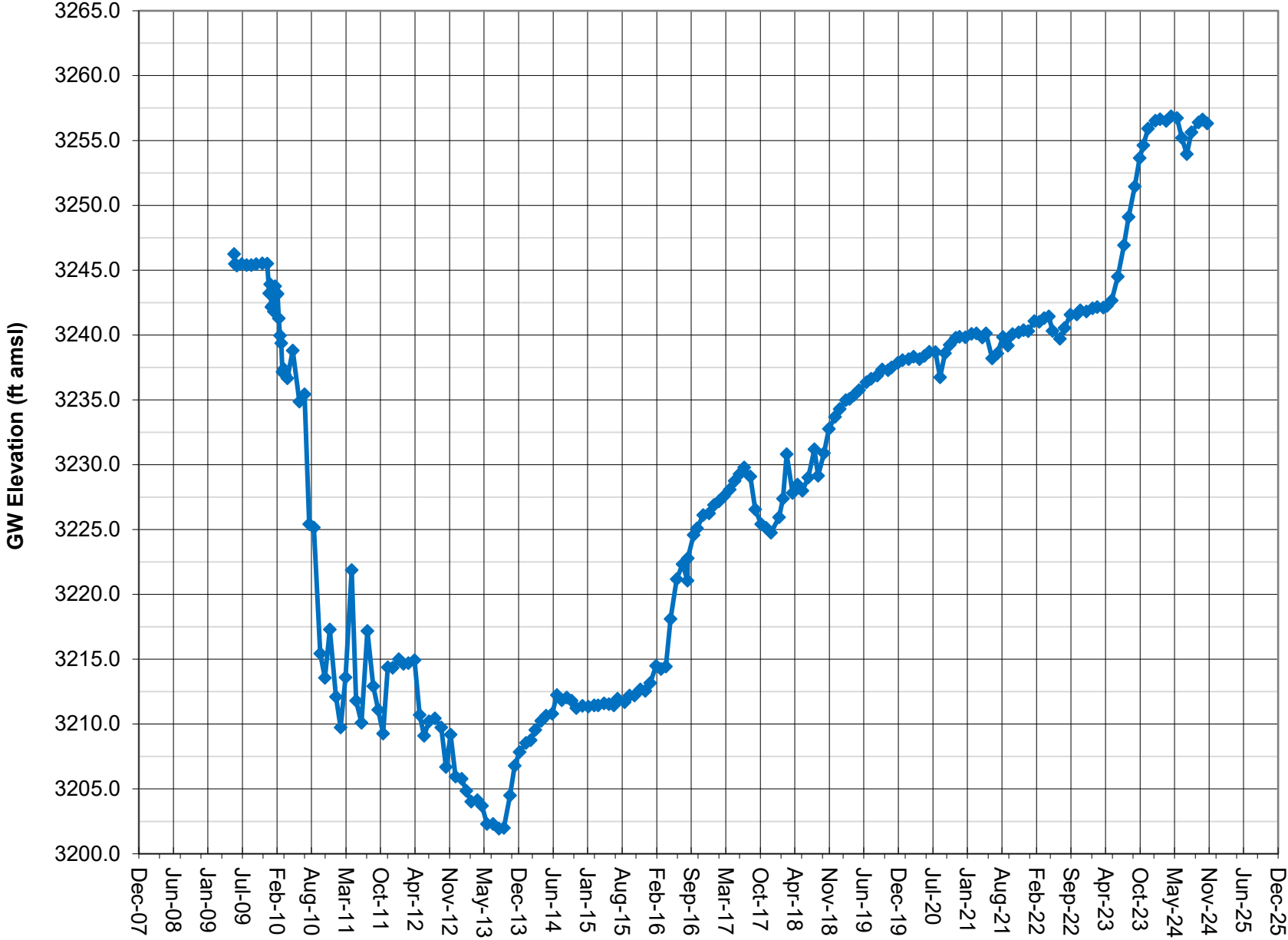
Note: Groundwater elevation data based on manual depth-to-water measurements.  
Screened interval is 170-260 feet.  
Coso Operating Co. initiated Hay Ranch Project pumping on 12/25/09.

### GROUNDWATER ELEVATION DATA - Long-Term (Manual) RV061 - Hay Ranch 1B Well



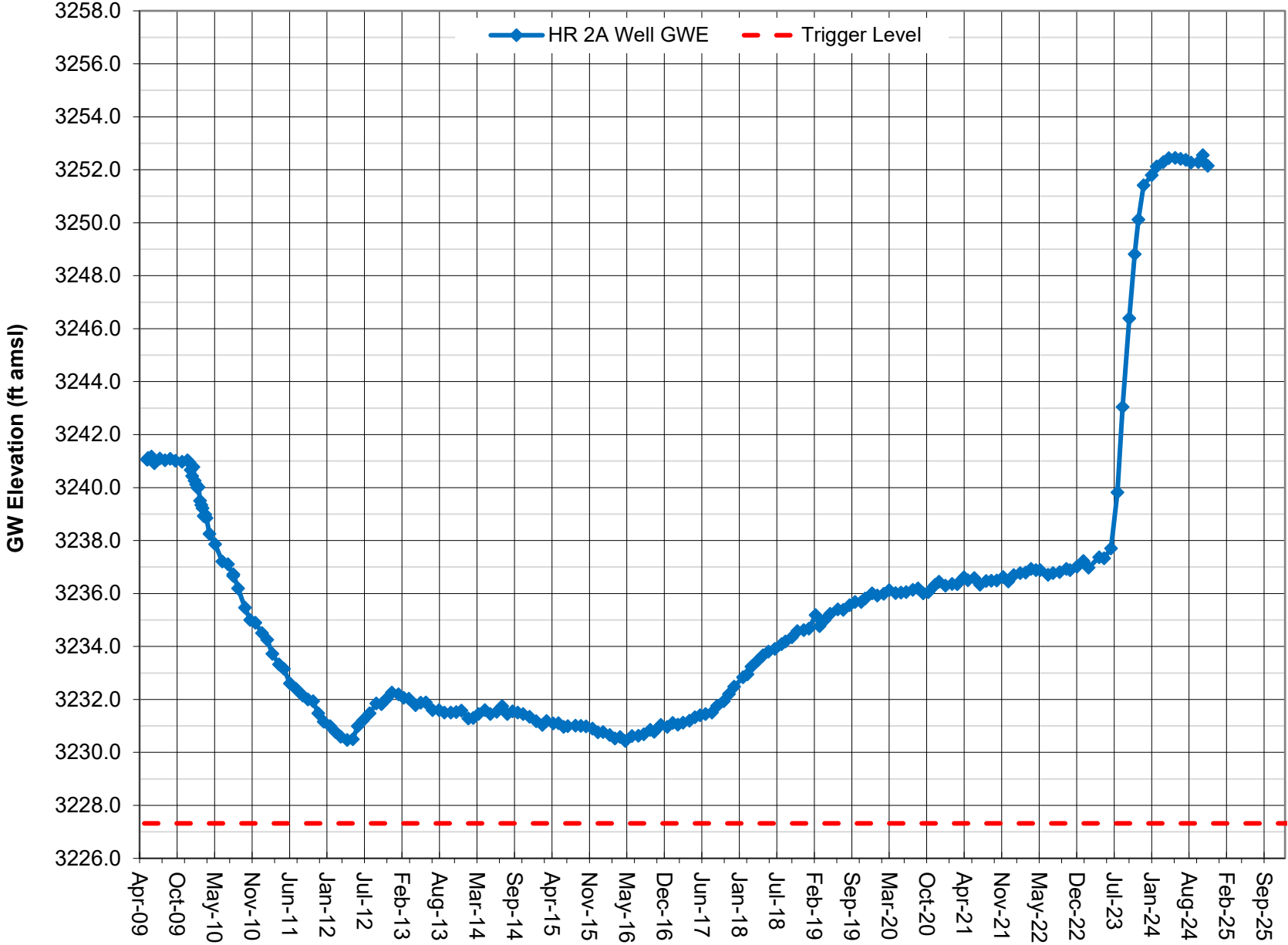
Note: Groundwater elevation data based on manual depth-to-water measurements.  
Screened interval is 490-540 feet.  
Coso Operating Co. initiated Hay Ranch Project pumping on 12/25/09.

### GROUNDWATER ELEVATION DATA - Long-Term (Manual) RV062 - Hay Ranch 1C Well



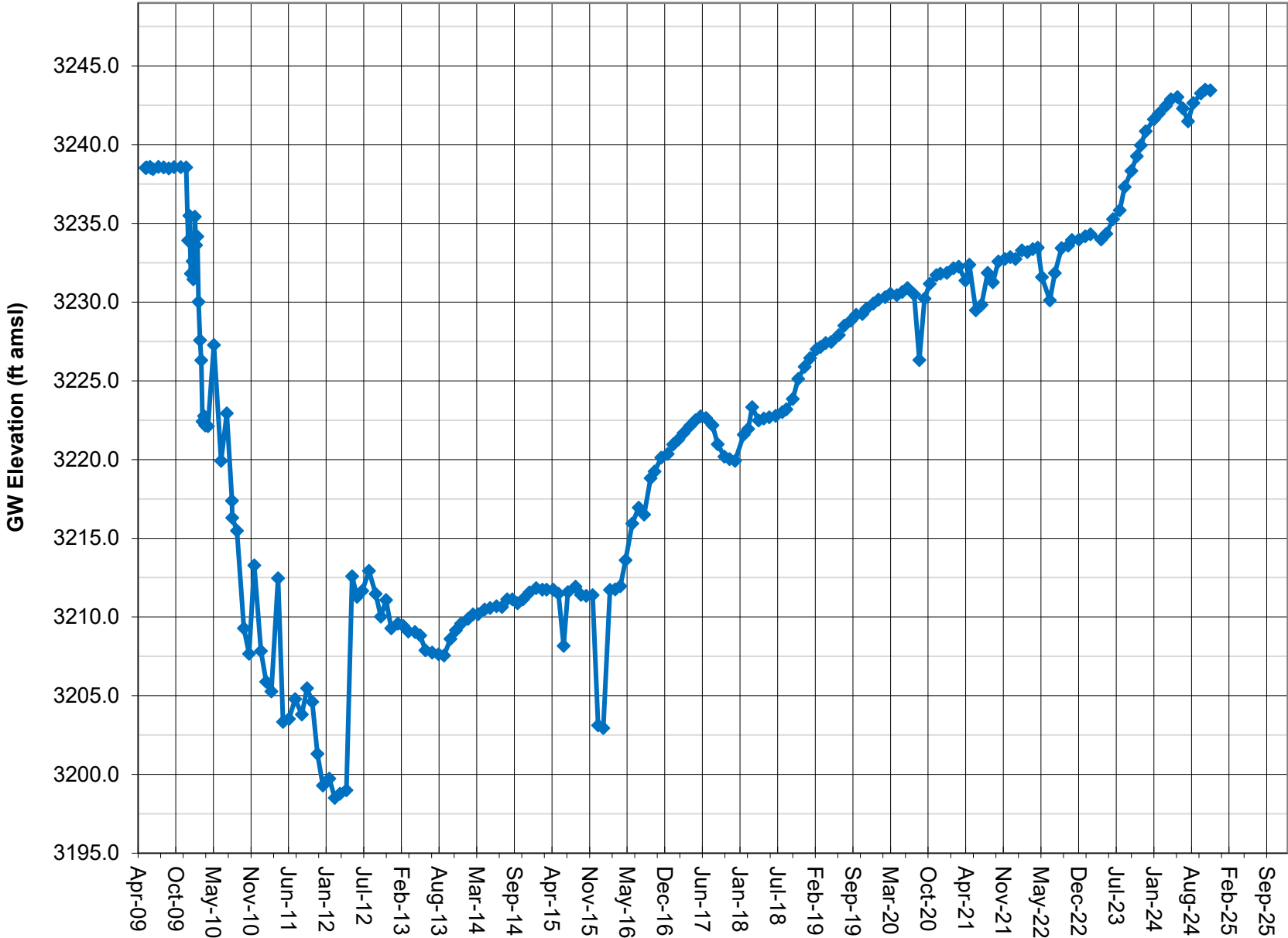
Note: Groundwater elevation data based on manual depth-to-water measurements.  
Screened interval is 340-405 feet.  
Coso Operating Co. initiated Hay Ranch Project pumping on 12/25/09.

### GROUNDWATER ELEVATION DATA - Long-Term (Manual) RV080- Hay Ranch 2A Well



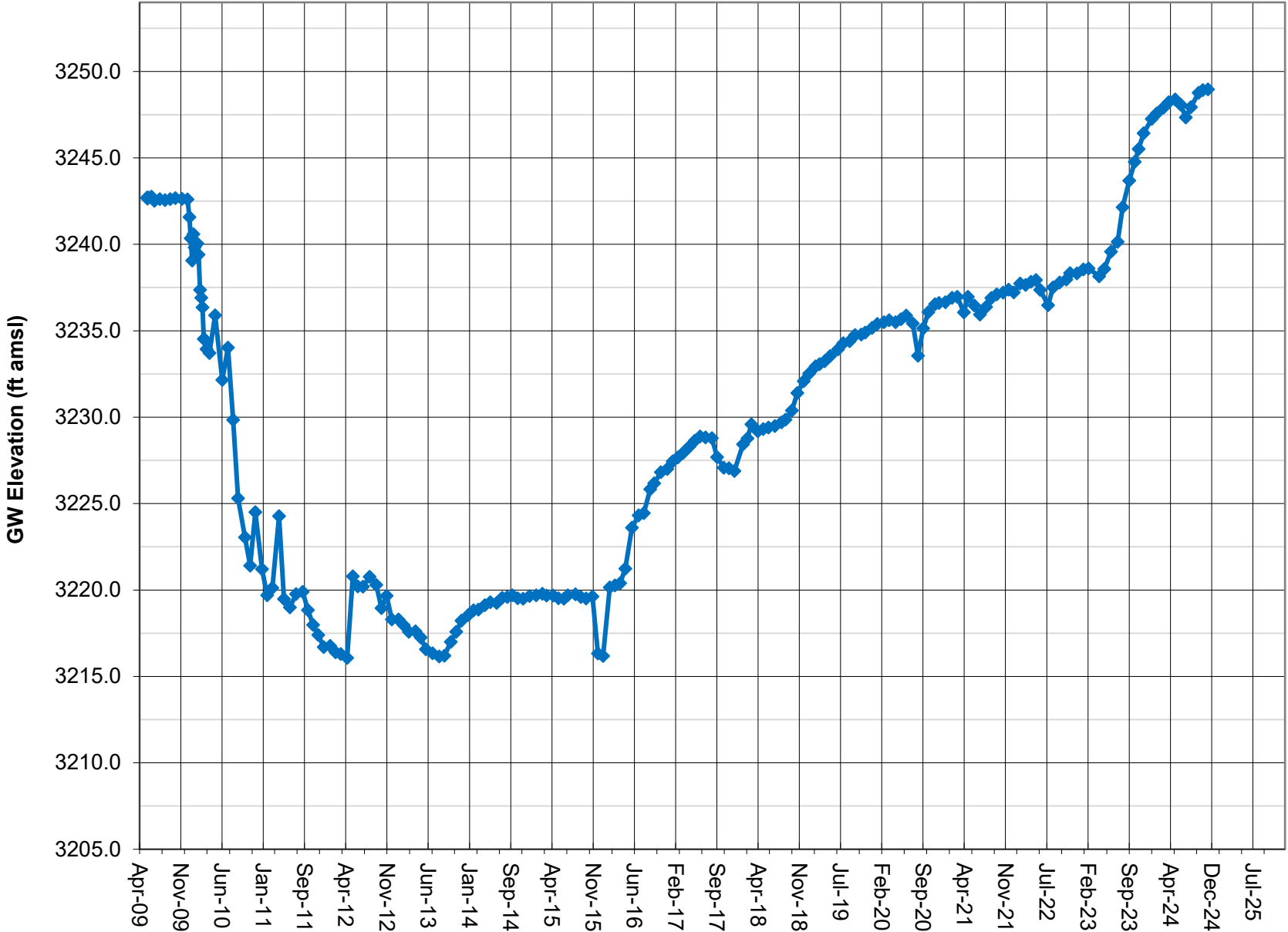
Note: Groundwater elevation data based on manual depth-to-water measurements.  
 Screened interval is 180-300 feet.  
 Coso Operating Co. initiated Hay Ranch Project pumping on 12/25/09.

## GROUNDWATER ELEVATION DATA - Long-Term (Manual) RV081 - Hay Ranch 2B Well



Note: Groundwater elevation data based on manual depth-to-water measurements.  
 Screened interval is 519-584 feet.  
 Coso Operating Co. initiated Hay Ranch Project pumping on 12/25/09.

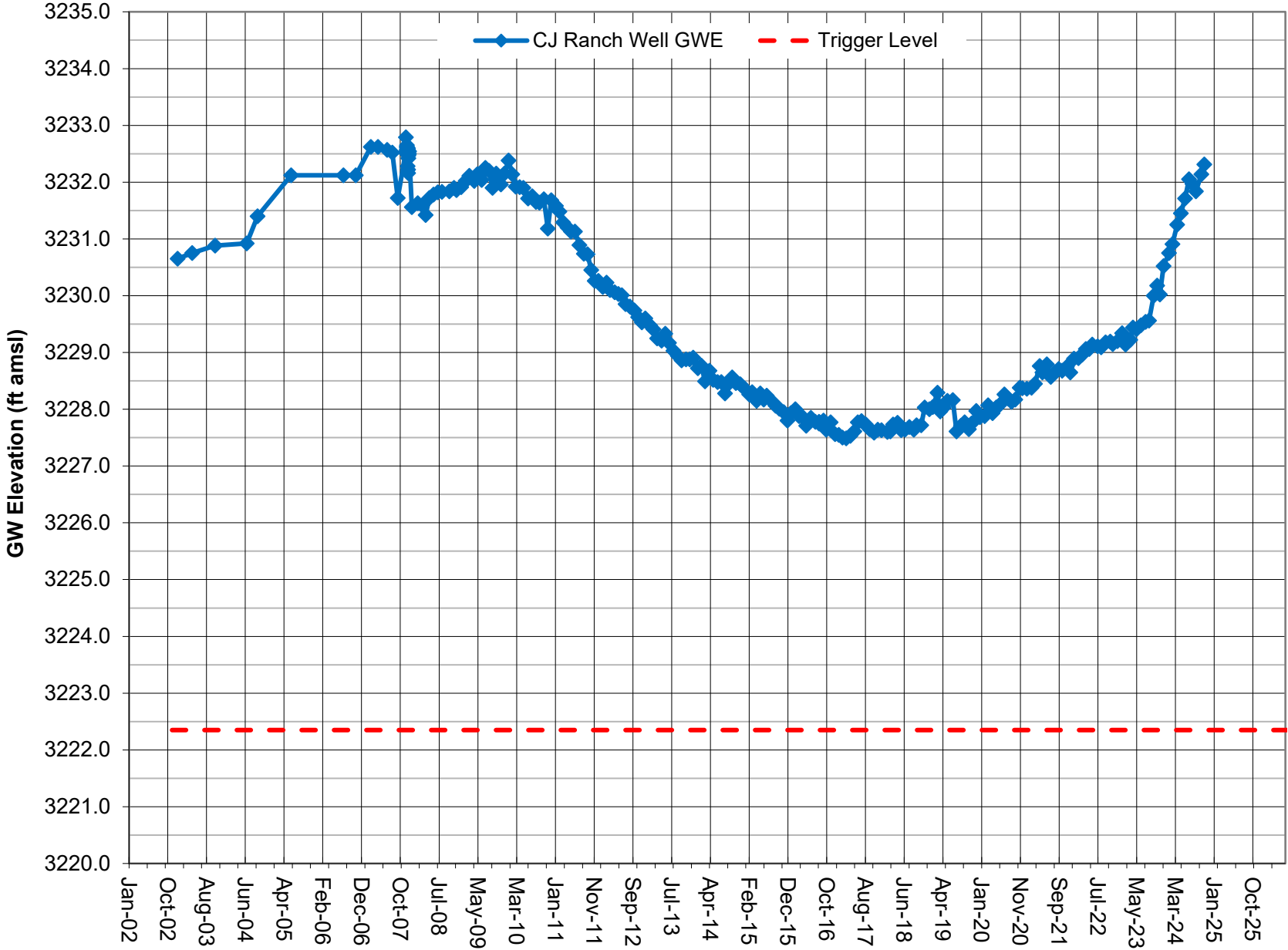
**GROUNDWATER ELEVATION DATA - Long-Term (Manual)**  
**RV082 - Hay Ranch 2C Well**



Note: Groundwater elevation data based on manual depth-to-water measurements.  
Screened interval is 370-420 feet.  
Coso Operating Co. initiated Hay Ranch Project pumping on 12/25/09.

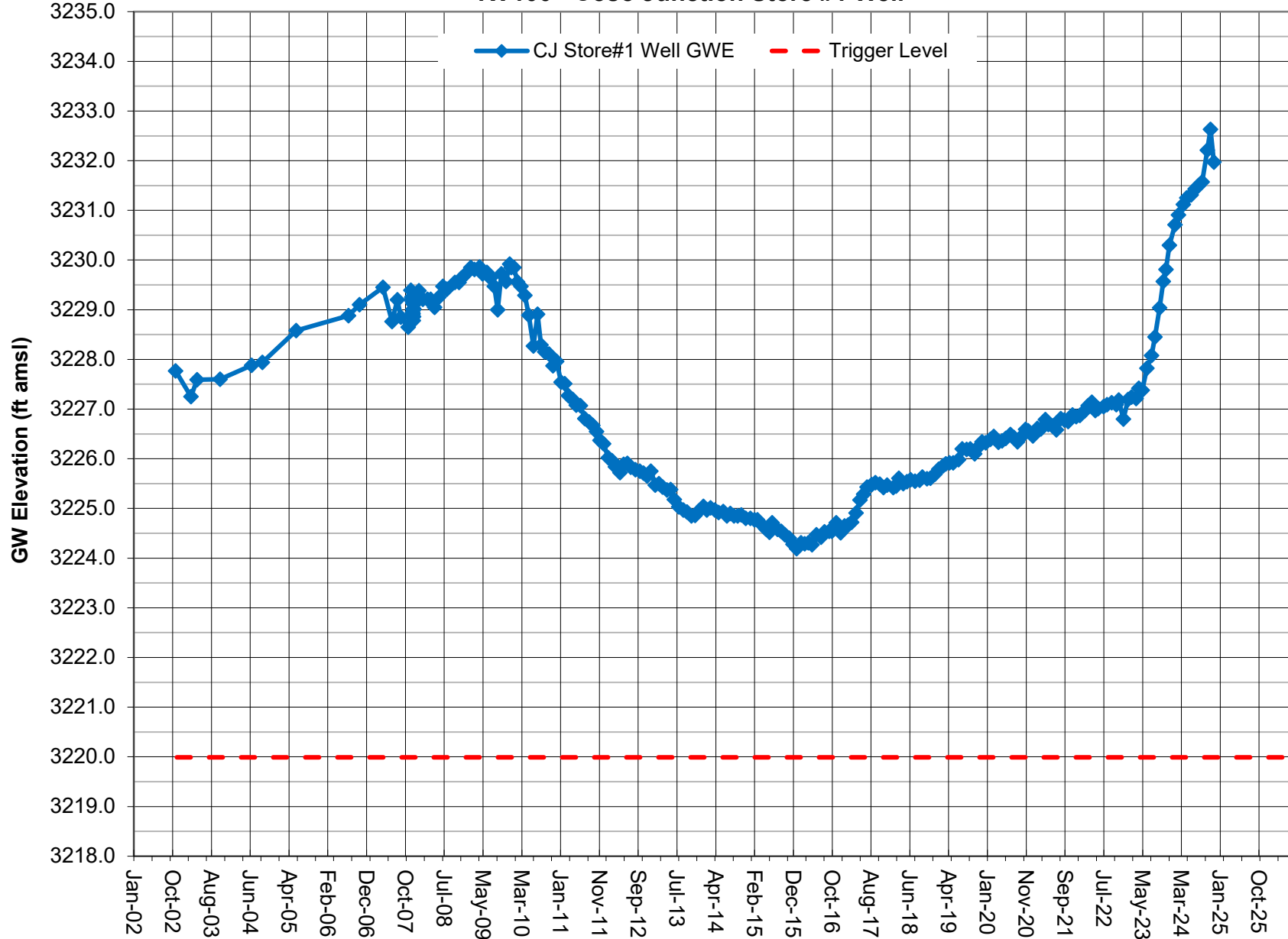


### GROUNDWATER ELEVATION DATA - Long-Term (Manual) RV090 - Coso Junction Ranch Well



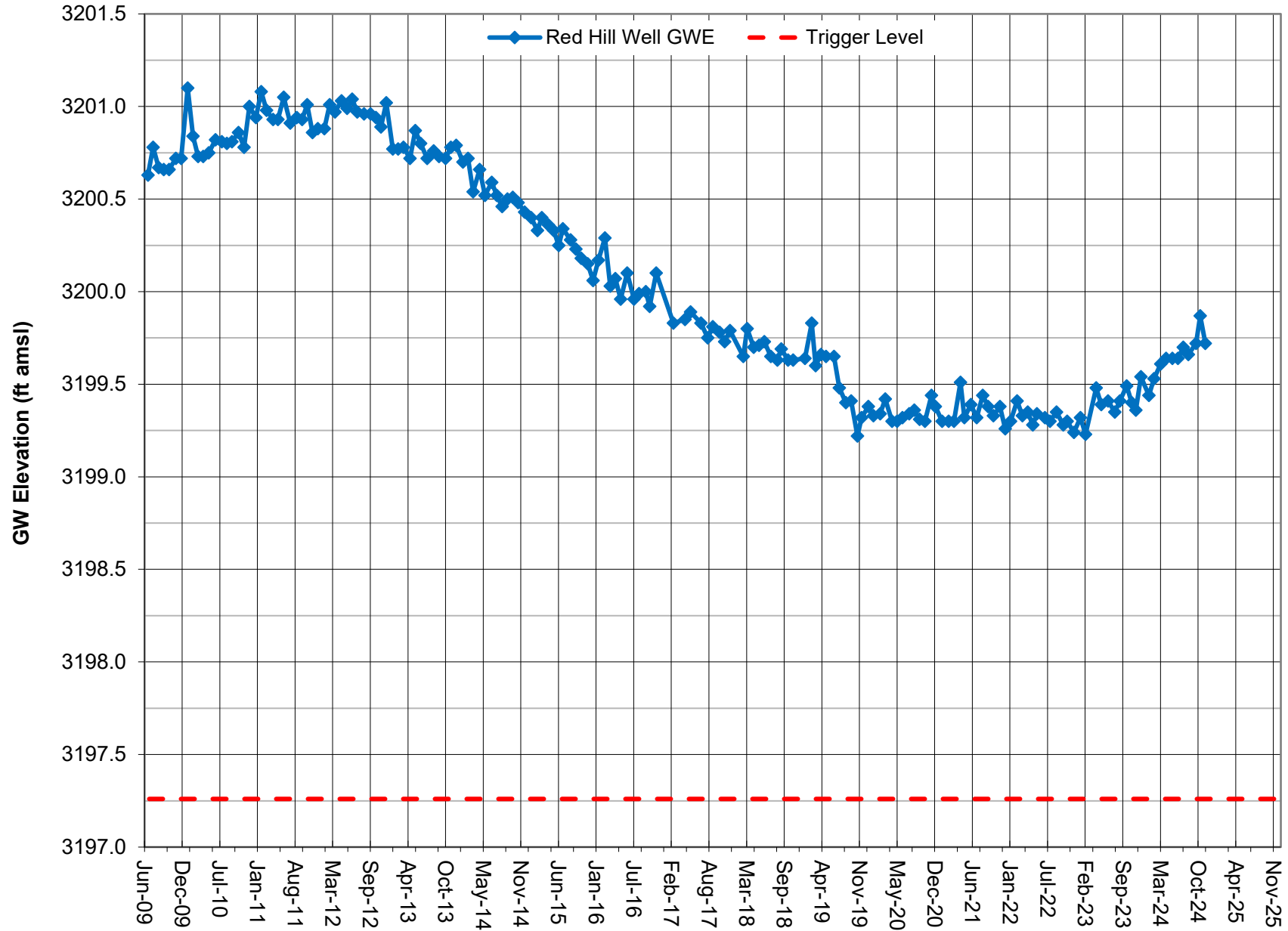
Note: Groundwater elevation data based on manual depth-to-water measurements.  
 Coso Operating Co. conducted a pump test on the Hay Ranch South Well in fourth quarter 2007.  
 Coso Operating Co. initiated Hay Ranch Project pumping on 12/25/09.

### GROUNDWATER ELEVATION DATA - Long-Term (Manual) RV100 - Coso Junction Store #1 Well



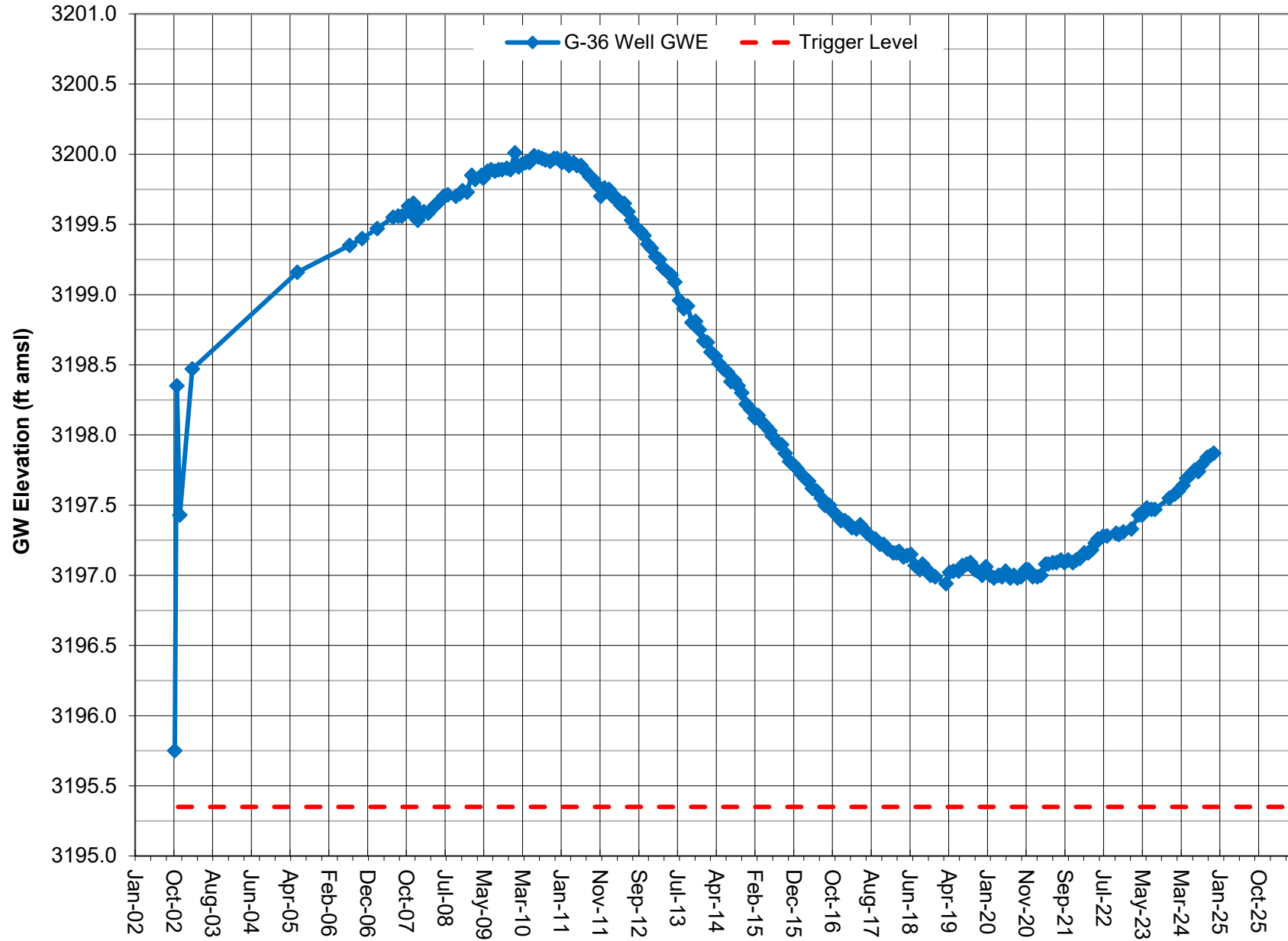
Note: Groundwater elevation data based on manual depth-to-water measurements.  
Well is adjacent to actively pumped domestic well.  
Coso Operating Co. initiated Hay Ranch Project pumping on 12/25/09.

# GROUNDWATER ELEVATION DATA - Long-Term (Manual) RV120 - Red Hill Well



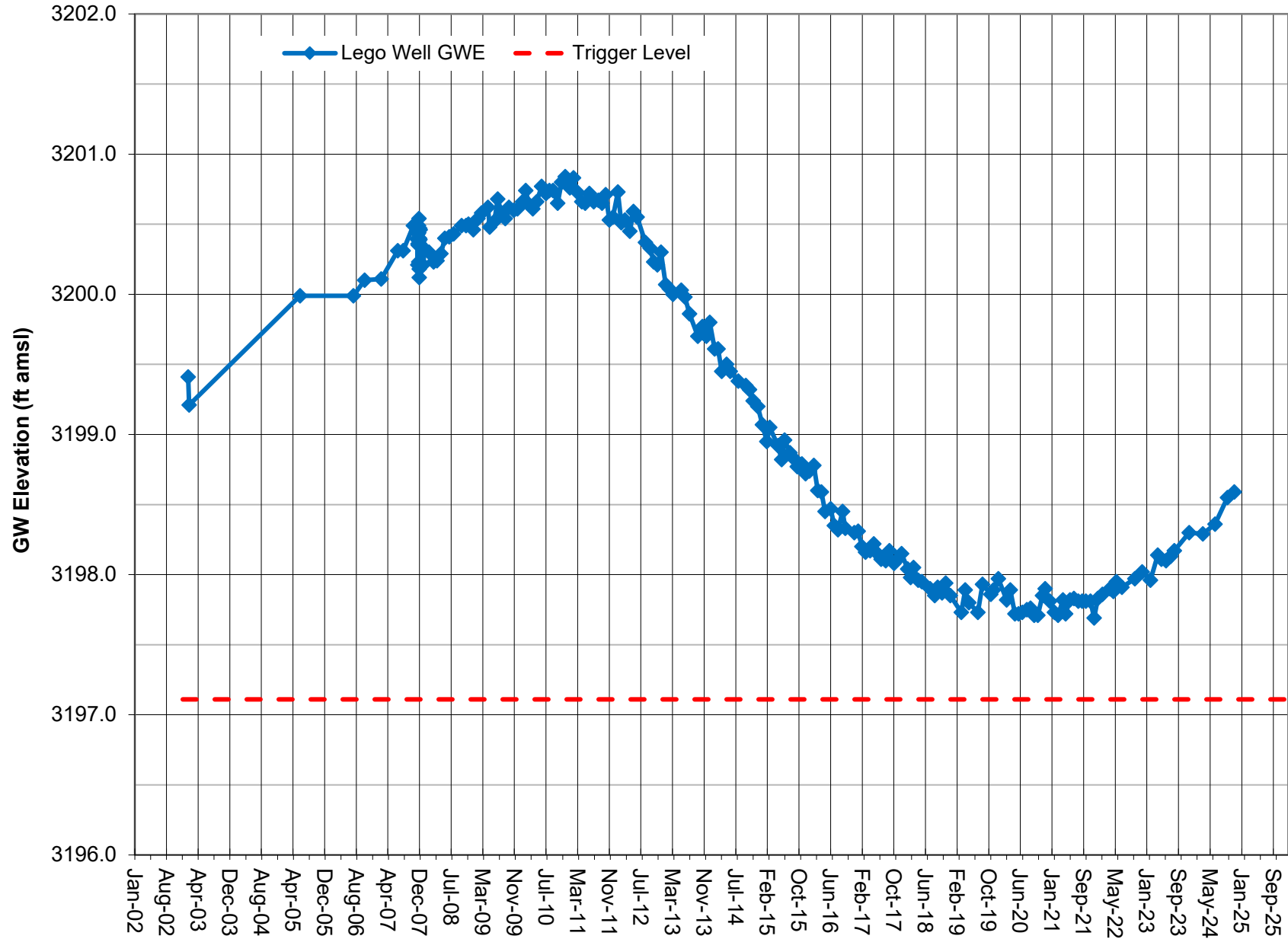
Note: Groundwater elevation data based on manual depth-to-water measurements.  
Coso Operating Co. initiated Hay Ranch Project pumping on 12/25/09.

### GROUNDWATER ELEVATION DATA - Long-Term (Manual) RV130 - G-36 Well



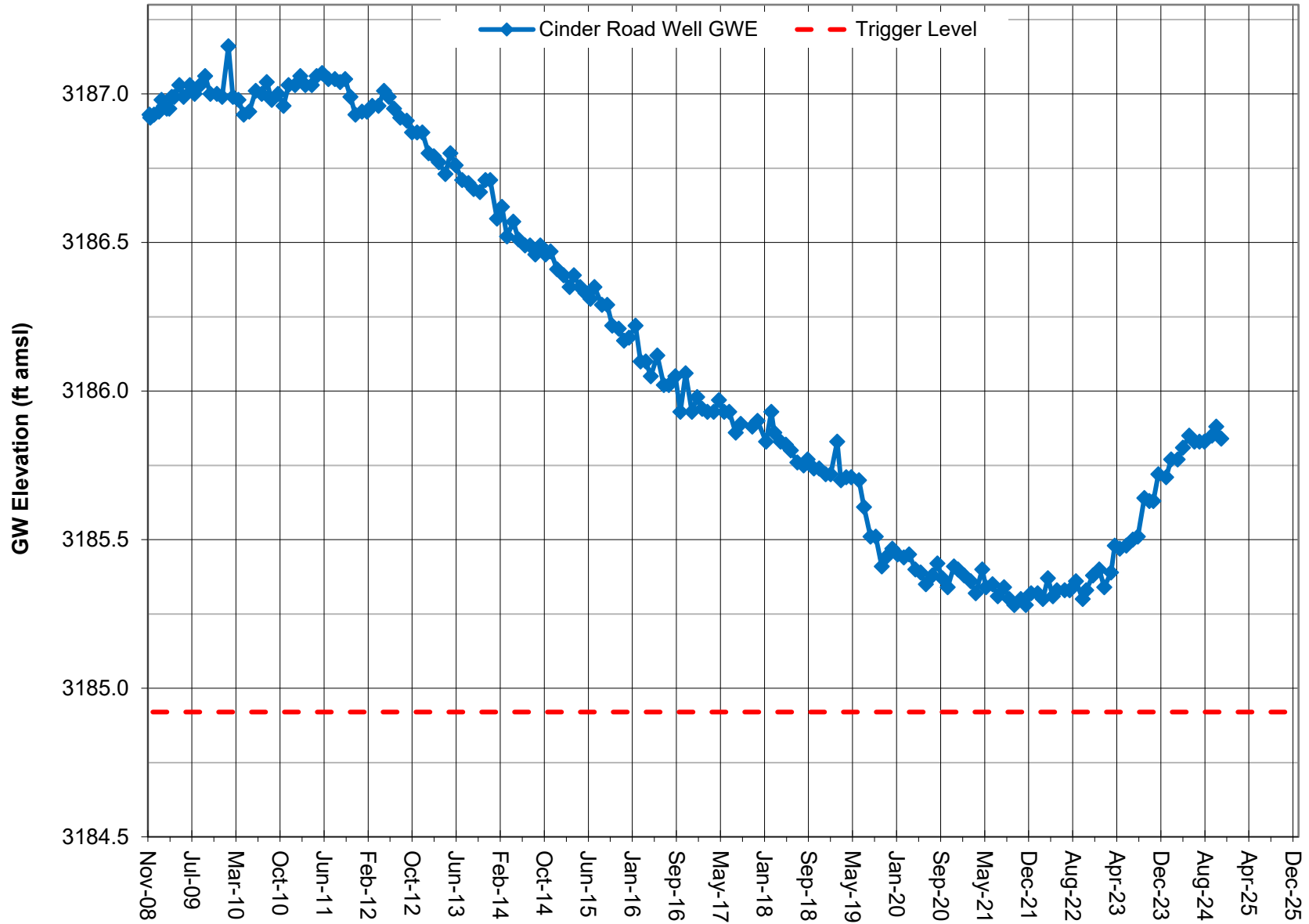
Note: Groundwater elevation data based on manual depth-to-water measurements.  
Coso Operating Co. initiated Hay Ranch Project pumping on 12/25/09.

### GROUNDWATER ELEVATION DATA - Long-Term (Manual) RV140 - Lego Well



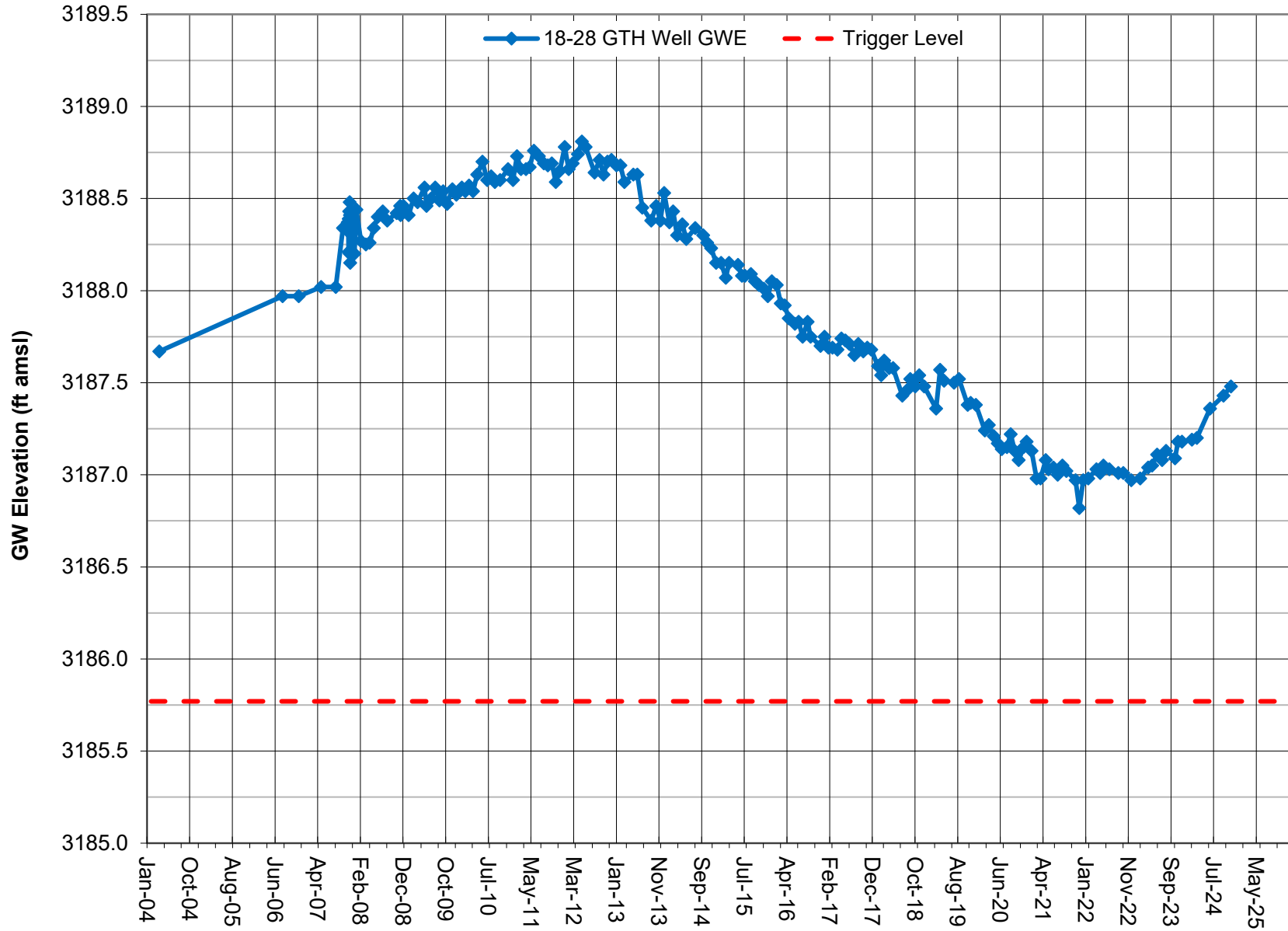
Note: Groundwater elevation data based on manual depth-to-water measurements.  
Not monitored in October 2024 due to lack of access.

### GROUNDWATER ELEVATION DATA - Long-Term (Manual) RV150 - Cinder Road Well



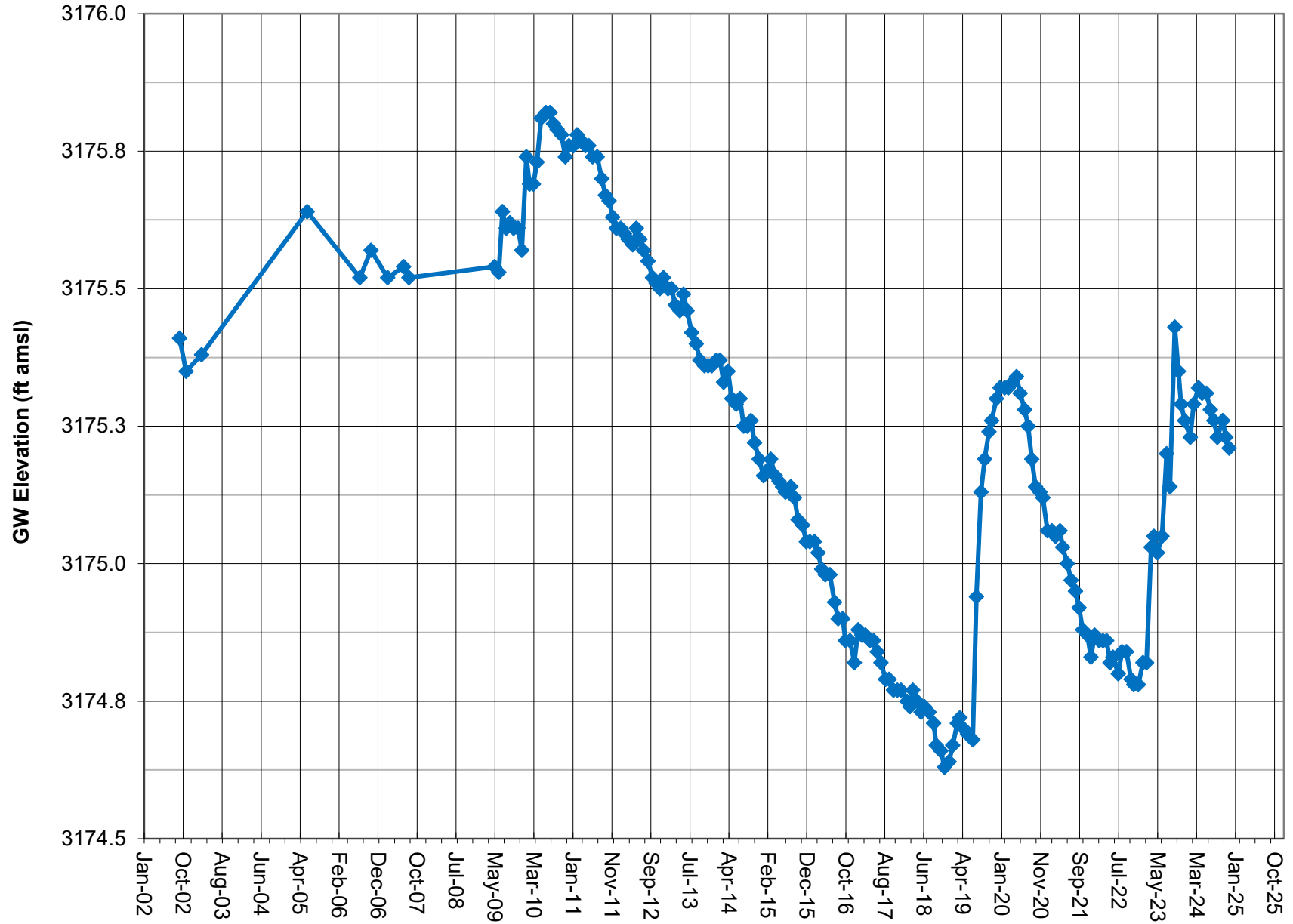
Note: Groundwater elevation data based on manual depth-to-water measurements.  
Coso Operating Co. initiated Hay Ranch Project pumping on 12/25/09.

### GROUNDWATER ELEVATION DATA - Long-Term (Manual) RV160 - 18-28 GTH Well



Note: Groundwater elevation data based on manual depth-to-water measurements.  
Not monitored in October 2024 due to lack of access.

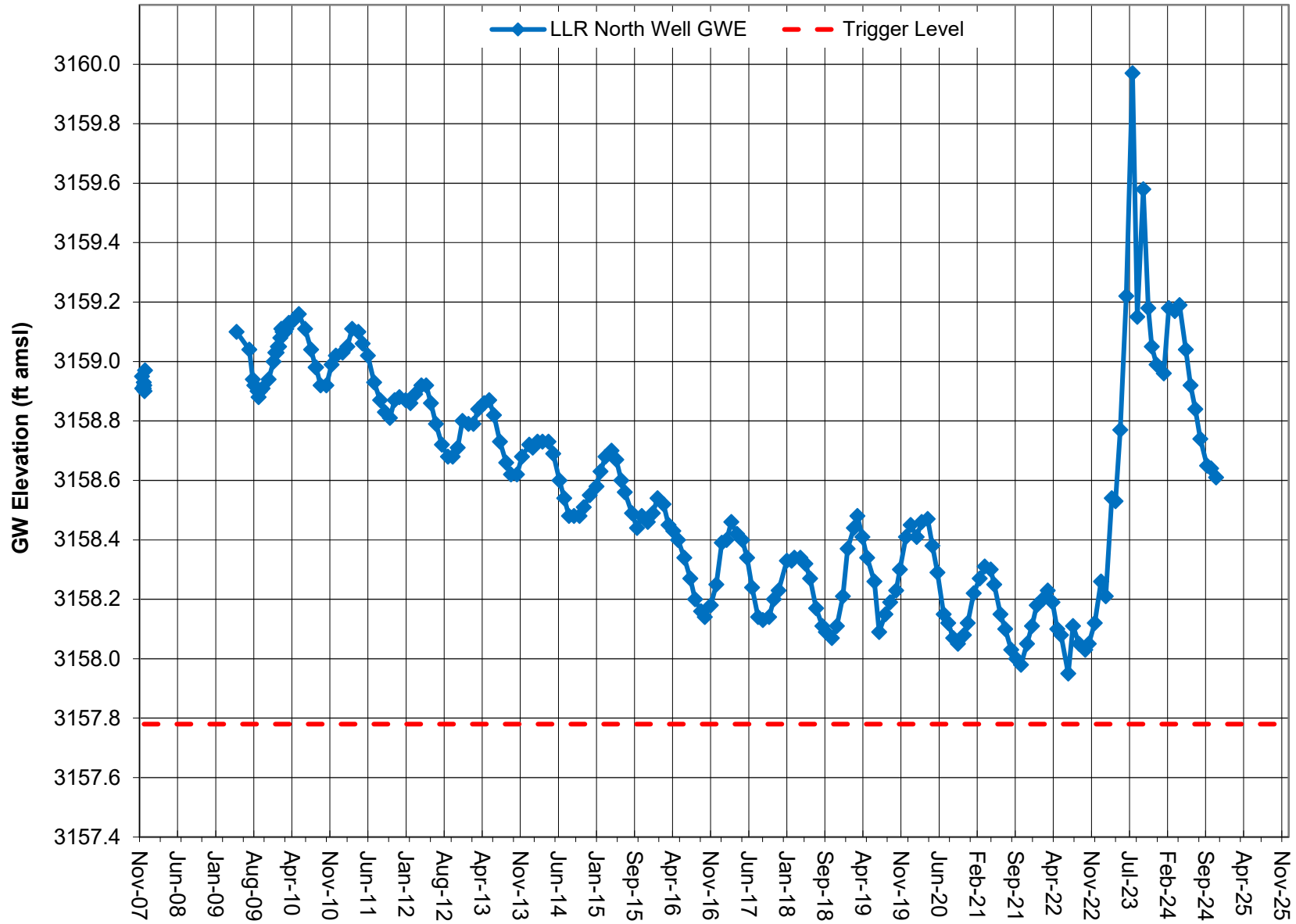
### GROUNDWATER ELEVATION DATA - Long-Term (Manual) RV170 - Fossil Falls Well



Note: Groundwater elevation data based on manual depth-to-water measurements.  
Coso Operating Co. initiated Hay Ranch Project pumping on 12/25/09.

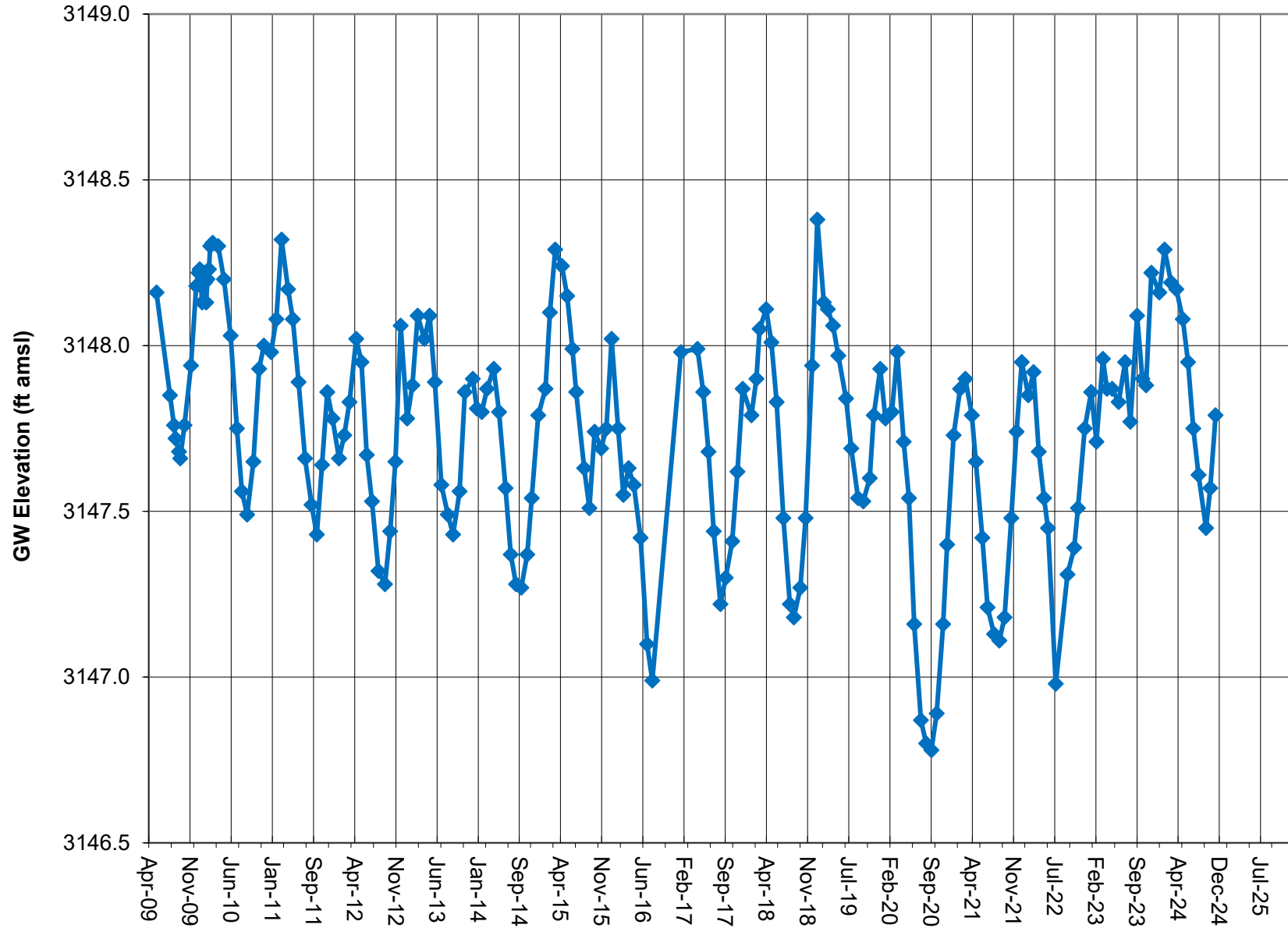


### GROUNDWATER ELEVATION DATA - Long-Term (Manual) RV180 - Little Lake Ranch North Well



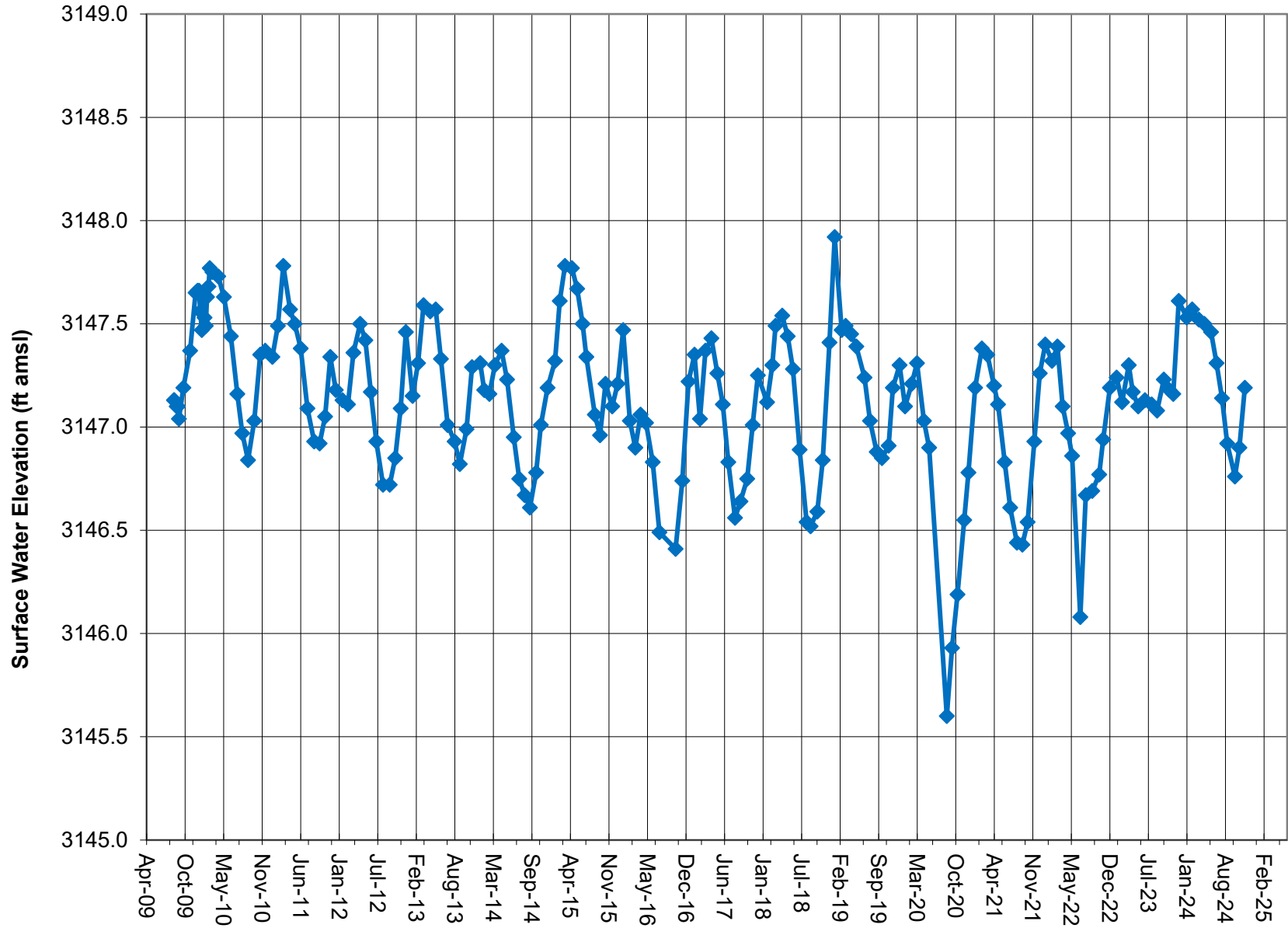
Note: Groundwater elevation data based on manual depth-to-water measurements.  
Coso Operating Co. initiated Hay Ranch Project pumping on 12/25/09.

### GROUNDWATER ELEVATION DATA - Long-Term (Manual) RV210 - Little Lake Ranch Dock Well



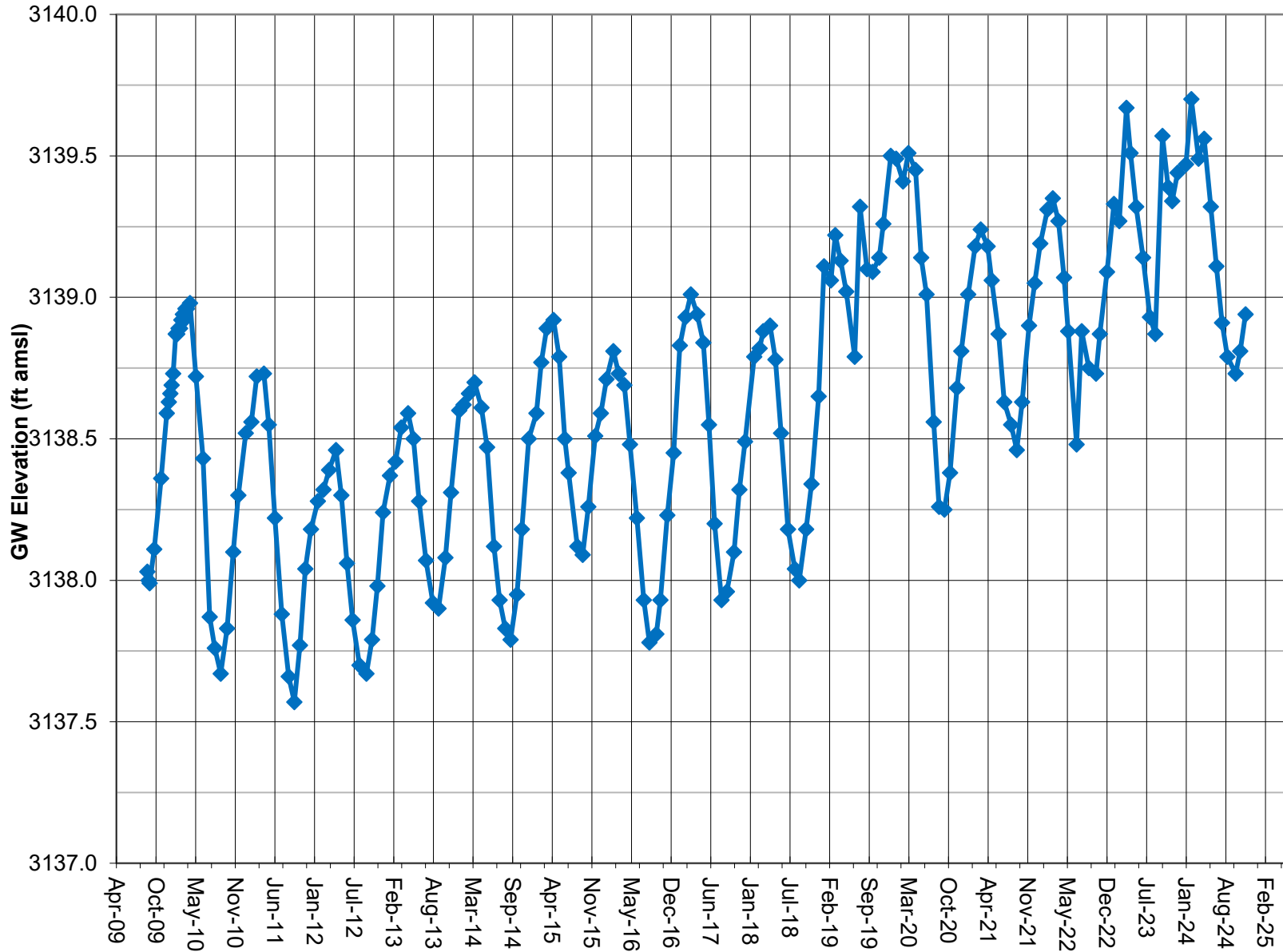
Note: Groundwater elevation data based on manual depth-to-water measurements. Lines between data points are approximations.

**SURFACE WATER ELEVATION DATA - Long-Term (Manual)**  
**RV220 - LLR Stilling Well (lake surface)**



Note: Surface water elevation data based on manual depth-to-water measurements. Lines between data points are approximations.

### GROUNDWATER ELEVATION DATA - Long-Term (Manual) RV260 - Little Lake Ranch Hotel Well



Note: Groundwater elevation data based on manual depth-to-water measurements.  
Coso Operating Co. initiated Hay Ranch Project pumping on 12/25/09.