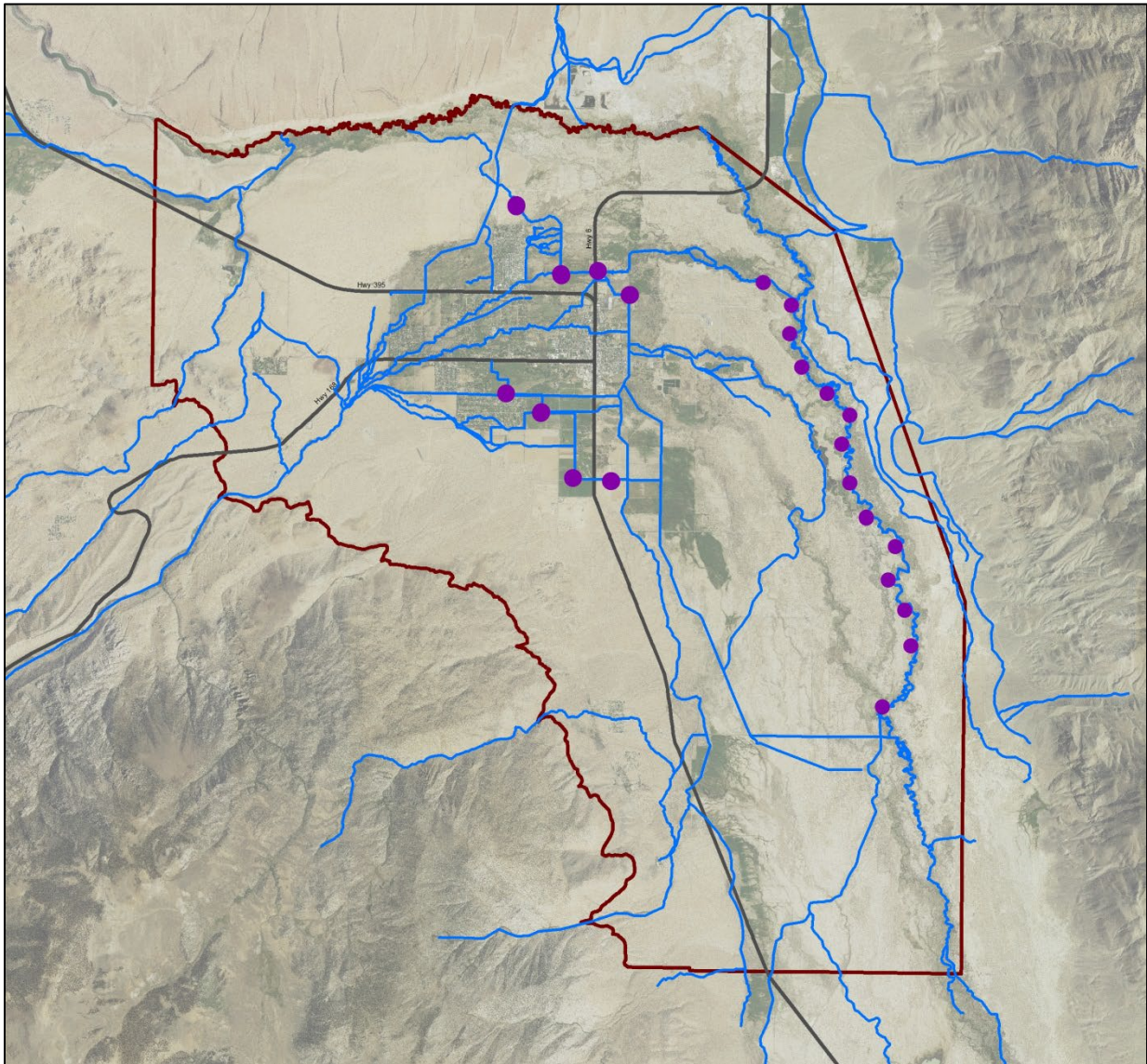


THE BISHOP CONE AUDIT FOR THE 2023-24 RUNOFF YEAR



Inyo County Water Department
Final
November 2024

THE BISHOP CONE AUDIT FOR THE 2023-24 RUNOFF YEAR

TABLE OF CONTENTS

1.0	INTRODUCTION.....	1
2.0	BACKGROUND.....	1
3.0	WATER USES ON LADWP-OWNED LAND ON THE BISHOP CONE.....	3
4.0	TOTAL LADWP GROUNDWATER EXTRACTION ON LADWP-OWNED LAND ON THE BISHOP CONE FOR RUNOFF YEARS 2022-23 AND 2023-24.....	6
5.0	COMPLIANCE WITH THE INYO COUNTY/LOS ANGELES LONG-TERM WATER AGREEMENT.....	7

TABLES

TABLE 1	WATER USES ON LOS ANGELES-OWNED LAND ON THE BISHOP CONE IN RUNOFF YEAR 2023-24.....	5
TABLE 2	FLOWING AND PUMPED GROUNDWATER BY WELL ON THE BISHOP CONE IN RUNOFF YEAR 2023-24.....	8
TABLE 3	LADWP USES IN COMPARISON TO LADWP GROUNDWATER EXTRACTION ON THE BISHOP CONE.....	9

FIGURES & MAP

FIGURE 1	TYPE OF LADWP GROUNDWATER AND TOTAL GROUNDWATER EXTRACTION ON THE BISHOP CONE FOR RUNOFF YEARS 2022-23 AND 2023-24.....	7
FIGURE 2	WATER USES VERSUS EXTRACTIONS ON THE BISHOP CONE FOR RUNOFF YEARS 1996-97 to 2023-24.....	9
MAP 1	BISHOP CONE AUDIT FEATURES.....	4

APPENDICES

APPENDIX A	Section VII of the Inyo County/Los Angeles Long-Term Water Agreement
APPENDIX B	Section IV.D of the Green Book
APPENDIX C	Data on Bishop Cone Audit Uses and Total Groundwater Extracted on the Bishop Cone (Supplied by LADWP)

THE BISHOP CONE AUDIT FOR THE 2023-24 RUNOFF YEAR

1.0 INTRODUCTION

The Bishop Cone Audit (Audit or BCA) is an annual comparison between Los Angeles Department of Water and Power's (LADWP) water usage on Los Angeles-owned lands on the Bishop Cone and its amount of groundwater extraction from wells on the Bishop Cone (Cone). The Bishop Cone Audit is required by the Inyo County/Los Angeles Long-Term Water Agreement (Water Agreement). The "Bishop Cone" is a reference to the legally defined area in the 1940 Hillside Decree which incorporates most of the Bishop Creek alluvial fan along with a portion of the northern Owens Valley from Bishop south towards Big Pine (Map 1). The Water Agreement and the Green Book (the technical appendix to the Water Agreement) define the terms, conditions, and procedures of the Bishop Cone Audit. Inyo County Water Department (ICWD) staff compiles the Bishop Cone Audit from data provided by LADWP. The Audit sums pumping and flowing well amounts and compares those totals to water use on Los Angeles-owned land during a given runoff year (April 1 to March 31) to determine whether LADWP's groundwater extractions exceed its surface water uses on the Bishop Cone.

2.0 BACKGROUND

The City of Los Angeles owns prior appropriative surface water rights in the Bishop area. Los Angeles also owns groundwater rights on the Bishop Cone as a consequence of its ownership of overlying land. A system of ditches and canals exists to convey surface water from Bishop Creek and the Owens River, as well as groundwater pumped from LADWP wells, to irrigated land throughout the Bishop Cone, with some water exiting the Cone. In 1930 and 1931, Los Angeles extracted groundwater from wells on the Bishop Cone for the purpose of export to Los Angeles. This export of groundwater was challenged by local residents, and in the 1940 Hillside Decree, Los Angeles agreed not to pump groundwater for the purpose of export off the Bishop Cone.

Relevant language of the 1940 Hillside Decree is presented below (a link to the entire decree can be found at the ICWD's website at www.inyowater.org/documents/hillside-decree-1940/):

XI

That the defendants [LADWP], their servants, agents, employees, and assigns, and each of them, be, and they are hereby, enjoined, prohibited, and restrained from in any manner whatsoever pumping, extracting, taking, or transporting out of the Bishop Cone area any subterranean waters from beneath said area: provided, however, that nothing in this judgment contained shall in any manner enjoin, prohibit, or restrain the defendants, their servants, agents, employees, assigns, or any of them, from maintaining or operating their presently-existing drainage ditches to the full extent of their present normal capacity, or from taking artesian water that may arise to the surface of said area outside the casings of any of defendants' capped wells, or from pumping, extracting, taking, or using any such water as may be reasonably necessary for beneficial use upon any lands belonging to the defendants,

In 1972, Inyo County filed a California Environmental Quality Act suit claiming that increased groundwater pumping by LADWP was harming the environment of the Owens Valley and

demanding that an Environmental Impact Report (EIR) be completed to analyze the effects of this increased pumping. After numerous legal challenges and negotiations, in 1991 an EIR was approved for LADWP's groundwater pumping, and a long-term groundwater management plan was agreed upon by Inyo County and LADWP. Section VII.A of the 1991 Water Agreement addresses the Bishop Cone and Hillside Decree with relevant language quoted below (full text of the 1991 EIR, the Water Agreement and the Greenbook can be found at the ICWD's website at <http://www.inyowater.org/documents/governing-documents/>):

“Before the Department [LADWP] may increase groundwater pumping above present levels, or construct any new wells on the [Bishop] Cone, the Technical Group must agree on a method for determining the exact amount of water annually used on Los Angeles-owned lands on the Cone. The agreed upon method shall be based on a jointly conducted audit of such water uses. The Department’s annual groundwater extractions from the Cone shall be limited to an amount not greater than the total amount of water used on Los Angeles-owned lands on the cone during that year.” (Water Agreement Section VII.A, Appendix A)

At its October 17, 1995, meeting, the Technical Group agreed to recommend to the Inyo County/Los Angeles Standing Committee the description of a Bishop Cone Audit procedure to be incorporated into the Green Book. The Standing Committee adopted the agreed-upon Bishop Cone Audit procedure on November 7, 1996, as Section IV.D of the Green Book.

Section IV.D.1.a. of the Green Book (Appendix B) states: *“For the purposes of the Bishop Cone audit, water usage on Los Angeles-owned land on the Bishop Cone is defined as the quantity of water supplied to such land, including conveyance losses, less any return flow to the aqueduct system. Water usage is documented on a runoff-year basis and is compiled by LADWP each May in the Bishop Area Water Use Report [Bishop Cone Audit Uses Report].”*

In theory, compliance with the Water Agreement and the Green Book is simple: LADWP can only extract groundwater to be used on its lands and leases on the Bishop Cone with no flow leaving the system. In a simplified, hypothetical situation, LADWP would have groundwater extraction wells at the “top” of the cone which would provide surface water to ditches running downhill to its lands and leases. Upon reaching the “lowest” land, no surface water would leave. However, there are many practical factors that dictate and complicate how the Bishop Cone Audit accounts for LADWP extractions and uses. Some of these factors are: the Bishop Cone topography (generally sloping west to east in the Bishop area, and north to south from Bishop towards Big Pine), the location of LADWP-owned lands throughout the Bishop Cone area, the location of LADWP's groundwater extraction wells (in central Bishop), the location of LADWP's flowing wells (east of Bishop adjacent to the Owens River), the location of the various ditch and canal systems used to convey water in the Bishop Cone, and operational necessities for conveying surface water both on and off the Bishop Cone.

To illustrate further, the primary source of water available for use on LADWP lands in the topographically higher west Bishop area of the cone is LADWP surface water from Bishop Creek that is diverted into various ditches for irrigation (use) on LADWP-owned land. Groundwater pumped from LADWP wells in central Bishop supplements the remaining Bishop Creek surface water. The now commingled surface and groundwater flows east and south and is used on LADWP land in the central and southern portions of the Cone. Groundwater extracted from flowing wells provides water to the Owens River for export and/or downstream

uses in the Owens Valley. Some mixture of surface and groundwater also leaves the Bishop Cone either in canals or the Owens River.

Prior to the adoption of the Water Agreement, several methods were researched to determine the best procedure for tracking LADWP's uses and extractions on the Bishop Cone. A final method was selected which compares the sum of pumped groundwater from production wells and flowing groundwater from artesian wells (extractions) to surface water applied to LADWP-owned lands on the Cone (uses). To determine the total uses, a lease-wise approach was selected which tracks the difference between water coming onto a given LADWP lease and the water (if any) that exits that lease to return to the conveyance system (ditch, canal, creek, or river). LADWP supplies a listing of surface water uses by each individual lease account in its annual Bishop Cone Audit Uses Report (Use Report). Credit for a use is granted on accounts that have been agreed to and inspected by ICWD staff. A combination of monitoring devices is used to track extractions and uses on the Bishop Cone, including flumes, weirs, and propeller meters. Flow measurements are taken either manually or continuously using data-logging devices at these sites.

It is important to note that the Bishop Cone Audit does not attempt to compute a complete surface or groundwater budget. Its purpose is to monitor compliance with the dictates of the Water Agreement, the Green Book, and the legal interpretations of the Hillside Decree. The Audit compares LADWP's total water uses to groundwater extractions during a given runoff year. ICWD staff gave a presentation on the Bishop Cone Audit to the Inyo County Water Commission on December 7, 2016, explaining the principles of the BCA in detail. A copy of the PowerPoint presented at the ICWC meeting can be found on the ICWD website: http://www.inyowater.org/wp-content/uploads/2016/12/Bishop-Cone-Audit-12_7_16.pdf

3.0 WATER USES ON LADWP-OWNED LAND ON THE BISHOP CONE

The location of the Bishop Cone and the pumping and flowing wells on the Bishop Cone are shown in Map 1. Also shown on Map 1 are the general locations of the LADWP-owned lease accounts used in the Bishop Cone Audit Uses Report (Appendix C).

Table 1 is a compilation of water usage by account number in acre-feet (AF) on LADWP-owned land on the Bishop Cone for the runoff years of 2022-23 and 2023-24. These water-usage amounts are a yearly total of the surface water (and commingled pumped groundwater) coming onto a given lease minus the surface water leaving the lease. Negative uses were not counted in the 2023-24 runoff year summed account totals.

Runoff in 2022-23 was below average (57%) and, due to lower-than-average flows in Bishop Creek, some parcels were unable to have full irrigation amounts supplied. Overall, there was a large increase in total water use on the Bishop Cone of 43,676 AF from 2022-23 (27,339 AF) to 2023-24 (71,015 AF). The majority of this change was due to increased surface water availability due to the historic high 2023-24 runoff year which was more than twofold (214%) the long-term average, and LADWP's operational spreading of as much runoff as possible in order to attempt to control water amounts flowing into Owens Lake. This resulted in several accounts receiving substantially more water than normal years with water uses more than double their long-term averages.

Map 1. Bishop Cone Audit Features

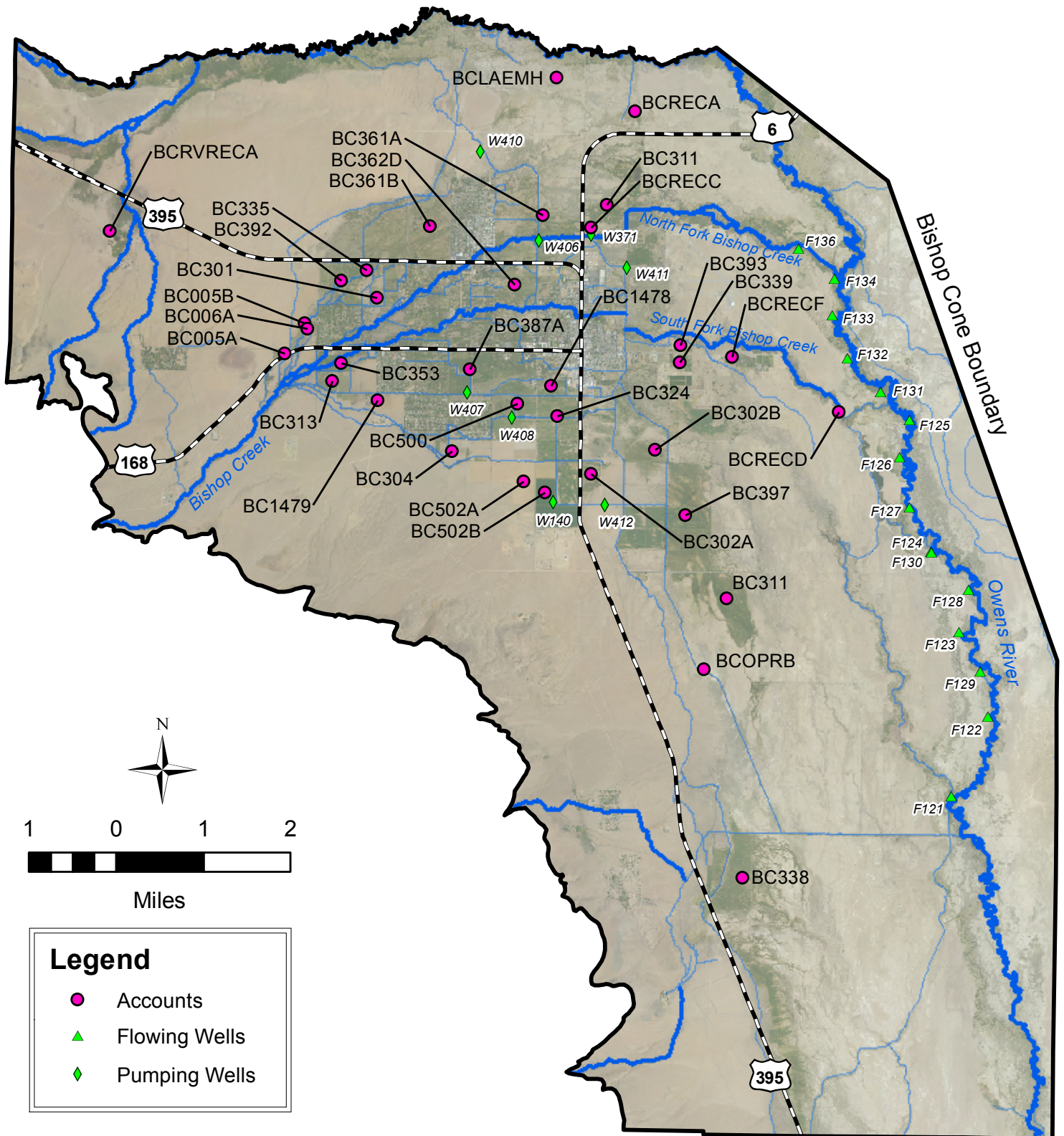


TABLE 1
WATER USES ON LOS ANGELES-OWNED LAND ON THE BISHOP CONE

LADWP ACCOUNT NUMBER^{*2}	RUNOFF YEAR^{*1} 2022-2023 (AF)	RUNOFF YEAR^{*1} 2023-2024 (AF)
BC502B (BA354B or BA362B)	828	635
BC302A	203	162
BC302B	1598	2400
BC311	3867	7541
BC313	894	2086
BC324	1175	1870
BC1478 (BAICR) ^{*2}	442	522
BC387A	687	2012
BCRECF	567	2739
BC339	352	1150
BC393	101	190
BC362D	(No Credit) ^{*3}	(No Credit) ^{*3}
BC304	198	100
BC500	638	1609
BC397 (BA387B) ^{*2}	4000	13867
BC361A	696	3570
BC361B	1696	3375
BC502A (BA354A or 362A) ^{*2}	479	1166
BCRECA	942	1781
BCRECC	3	1060
BCRECD	2250	8355
BC338	3660	6277
BCOPRB	436	4541
BCLAEMH	482	2165
BC353	391	285
BC005A	39	90
BC005B	88	230
BC006A	102	98
BC1479 (BA342) ^{*2}	35	35
BC392	(No Credit) ^{*3}	(No Credit) ^{*3}
BC301	438	906
BC335	53	198
BCRVRECA	(No Credit) ^{*3}	(No Credit) ^{*3}
TOTAL	27,339	71,015

*1 - A runoff year is defined as starting April 1 and ending March 31 of the following year.

*2 - Former account names listed in parenthesis; in 2015/16 "BA" prefix was changed to "BC"

*3 - Accounts need additional monitoring or diversion infrastructure to establish credit.

During fall 2016 through winter 2017, joint field visits to the active BCA accounts were conducted by ICWD and LADWP staff. Based on these visits, and as a result of observations and discussion of past infrastructure workings, several accounts were either granted or denied credit for the 2016/17 Audit. The accounts denied credit for 2016/17 were: BC362D, BC392, and BCRVRECA. At these three sites, ICWD staff deemed there to be insufficient flow monitoring, potentially allowing unmetered water to affect the accounts without proper quantification. ICWD and LADWP staff visited these BCA accounts in July 2024, and no additional flow monitoring devices have been installed at these accounts. Therefore, BC362D, BC392, and BCRVRECA were not granted credit in the current year.

Also based on the 2016/17 field inspections, the method for calculating use on a given account for the purpose of the BCA was changed. Prior to 2015/16, LADWP used Stockwater and Ditch Loss as credits to its lessees to distinguish between surface water used for irrigation and not used for irrigation. However, the Audit's water balance is to determine the total amount of water used on the Bishop Cone between metering devices. The defined scope of the Audit does not differentiate how the water is used (stockwater or irrigation). Stockwater for the purpose of this Audit is simply surface water supplied to a parcel during the year for stock instead of irrigation to grow plants; it is a distinction made by LADWP for the lessees but is a "use" for the purpose of the Audit with properly metered water flowing through diversions onto an account and not exiting the account. Ditch Loss is a similar accounting distinction made by LADWP and its lessees; it is an estimation of the water that seeps into the ground from the Account's metering device location prior to arriving at the actual surface water diversion point on the lease (these are sometimes large distances apart). The Ditch Losses are credited to the lessee to reflect water that cannot be used for irrigation. This water, however, is a use for purposes of the BCA. The Stockwater and Ditch Loss estimates from previous BCA's (prior to 2015/16) have been replaced with the more rigorous and accurate calculation of subtracting flow onto each account from flow off of that account.

The data reporting format used by LADWP for the BCA has also been updated with approval from ICWD staff. The updated Use Report contained in Appendix C has been simplified by removing LADWP's internal, lessee-related notations. The new Use Report now contains totals of water entering and leaving a lease (the pertinent information for conducting the Audit). All flow monitoring stations were inspected during the 2016/17 field campaign.

Finally, ICWD staff continues to receive the previous LADWP version of the Use Report to check for historic consistency. The changes in adding Stockwater and Ditch Loss credits for BCA reporting are the primary reason 2015-16 uses were substantially greater than 2014-15 uses. The additional increase in use between 2015-16 and 2016-17 is primarily due to increased surface water availability due to a moderately wet runoff year combined with operational spreading in early 2017. The increase in use from 2016-17 to 2017-18 is due to heavy runoff following the very wet winter (appx. 200% of long-term average). As noted previously, LADWP actively spread surface water throughout the Owens Valley; and a significant amount of surface water was spread throughout the Bishop Cone.

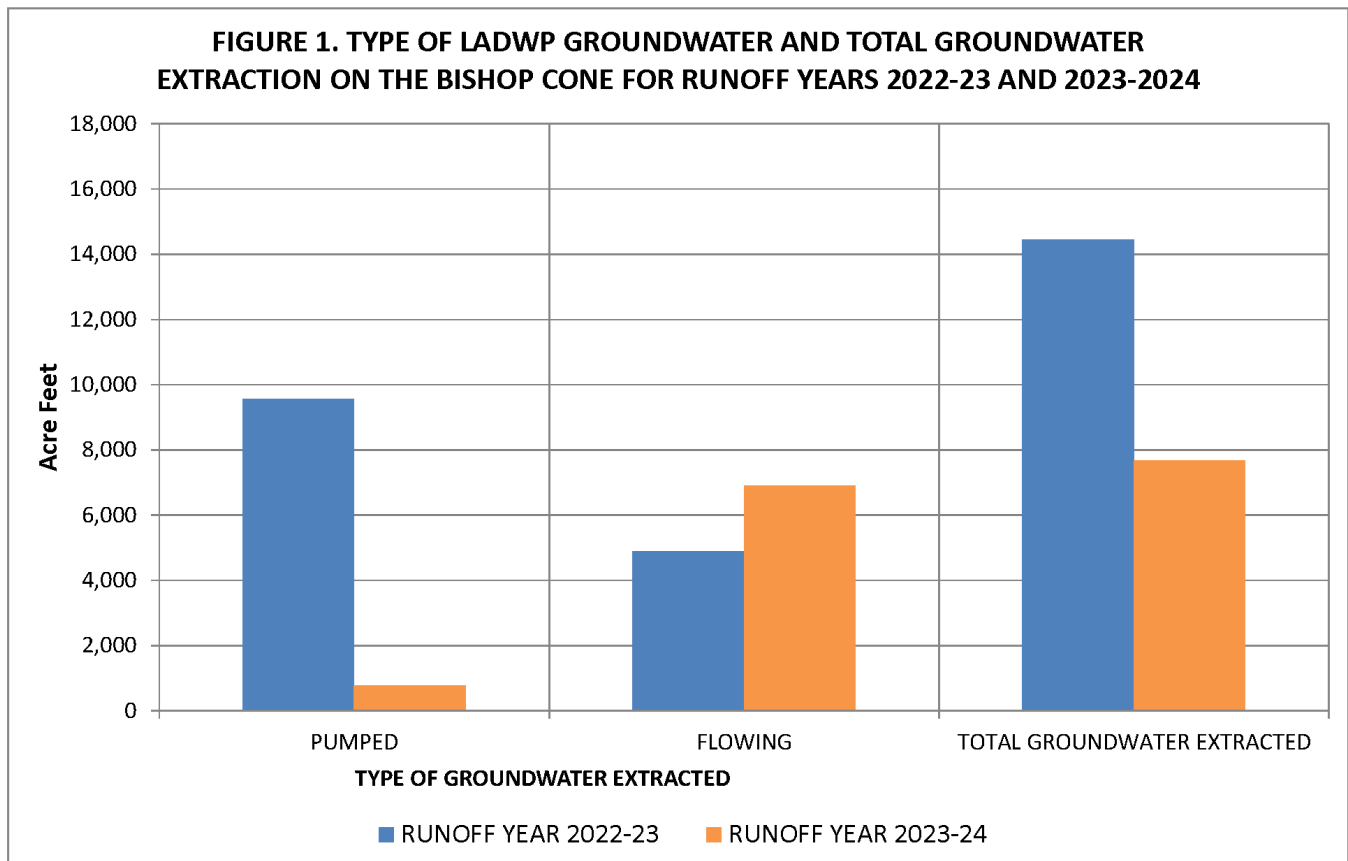
4.0 TOTAL LADWP GROUNDWATER EXTRACTION ON LADWP-OWNED LAND ON THE BISHOP CONE FOR RUNOFF YEARS 2022-23 AND 2023-24

Section IV.D.1.d of the Green Book (Appendix B) states: “Total groundwater extraction by LADWP will be compared with corrected water usage on the Bishop Cone for the runoff year. Total groundwater extraction is defined as the sum of all groundwater pumped by LADWP plus the amount of artesian water that flowed out of LADWP uncapped wells on the Bishop Cone during the runoff year.”

Figure 1 presents the total amount of LADWP groundwater extraction, and the groundwater extraction classified as flowing and pumped groundwater on the Bishop Cone in acre-feet for runoff years of 2022-23 and 2023-24.

For runoff year 2022-23, LADWP extracted 14,453 AF of groundwater (9,566 AF from pumped wells and 4,887 AF from flowing wells). For runoff year 2023-24, LADWP extracted 7,680 AF of groundwater (776 AF from pumped wells and 6,904 AF from flowing wells).

LADWP groundwater extractions on the Bishop Cone for the 2023-24 runoff year decreased by 6,773 AF compared to the previous year. 2022-23 runoff year was below average and historic 2023-24 runoff year was over two times the average runoff which corresponded to much less than average LADWP pumping and greater than average artesian discharge from LADWP flowing wells.



Flowing and pumped groundwater on the Bishop Cone are broken into detail by each well in Table 2.

TABLE 2
FLOWING AND PUMPED GROUNDWATER BY WELL ON THE BISHOP CONE
IN RUNOFF YEAR 2023-24

WELL	FLOWING GROUNDWATER (AF)	PUMPED GROUNDWATER (AF)
F121	124	NA
F122	104	NA
F123	211	NA
F124	0	NA
F125	1,286	NA
F126	484	NA
F127	537	NA
F128	396	NA
F129	103	NA
F130	485	NA
F131	1,083	NA
F132	440	NA
F133	438	NA
F134	922	NA
F136	293	NA
W140	NA	333
W371	NA	0
W406	NA	0
W407	NA	443
W408	NA	0
W410	NA	0
W411	NA	0
W412	NA	0
TOTAL	6,904	776

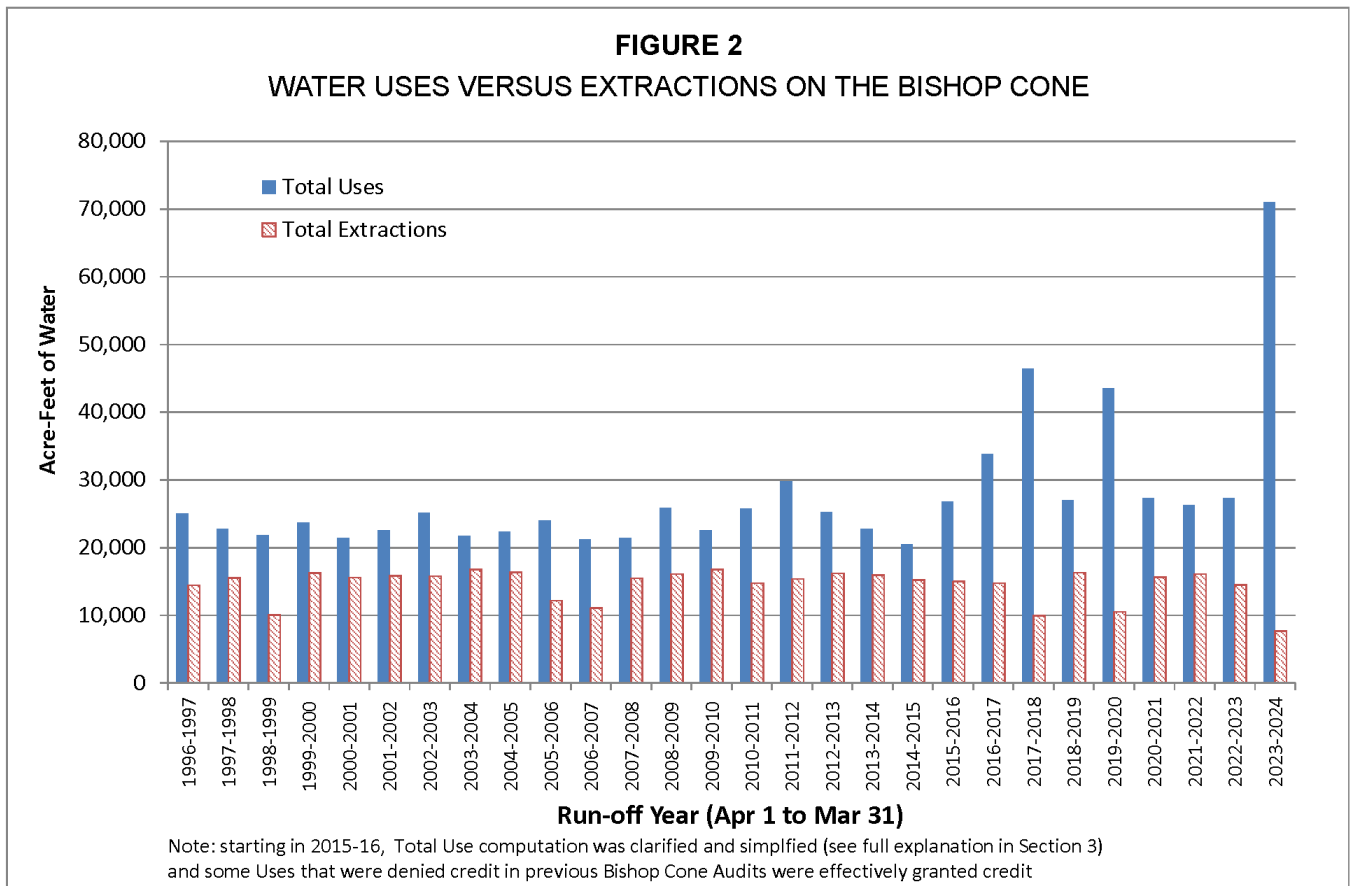
5.0 COMPLIANCE WITH THE INYO COUNTY/LOS ANGELES LONG-TERM WATER AGREEMENT

The Water Agreement provides that, during any runoff year, total groundwater extraction by LADWP on the Bishop Cone shall not exceed water usage on Los Angeles-owned land on the Cone. Table 3 shows that LADWP was in compliance with the above provision for runoff years 2022-23 and 2023-24 as the total uses on the Bishop Cone exceeded the total groundwater extractions for each year.

TABLE 3
LADWP USES IN COMPARISON TO LADWP GROUNDWATER
EXTRACTION ON THE BISHOP CONE

	RUNOFF YEAR 2022-23 (AF)	RUNOFF YEAR 2023-24 (AF)
TOTAL USES	27,339	71,015
TOTAL GROUNDWATER EXTRACTION	14,453	7,680
USES MINUS EXTRACTIONS	12,886	63,335
Hillside Decree Compliance?	YES	YES

Figure 2 presents LADWP’s water uses versus extractions since runoff year 1996-97. Uses have exceeded extractions throughout the data period; therefore, LADWP has been in compliance with Section IV.D.1.a. of the Green Book and the Water Agreement.



APPENDIX A

Section VII.A of the Inyo County/Los Angeles Long-Term
Groundwater Management Agreement

Section VII of the Agreement

VII. GROUNDWATER PUMPING ON THE BISHOP CONE

A. Any groundwater pumping by the Department on the "Bishop Cone" (Cone) shall be in strict adherence to the provisions of the Stipulation and Order filed on the 26th day of August, 1940, in Inyo County Superior Court in the case of Hillside Water Company, a corporation, et al. vs. The City of Los Angeles, a Municipal Corporation, et al., ("Hillside Decree").

Before the Department may increase groundwater pumping above present levels, or construct any new wells on the Cone, the Technical Group must agree on a method for determining the exact amount of water annually used on Los Angeles-owned lands on the Cone. The agreed upon method shall be based on a jointly conducted audit of such water uses.

The Department's annual groundwater extractions from the Cone shall be limited to an amount not greater than the total amount of water used on Los Angeles-owned lands on the Cone during that year. Annual groundwater extractions by the Department shall be the total of all groundwater pumped by the Department on the Cone, plus the amount of artesian water that flowed out of the casing of uncapped wells on the Cone during the year. Water used on Los Angeles-owned lands on the Cone, shall be the quantity of water supplied to such lands, including conveyance losses, less any return flow to the aqueduct system.

B. The overall management goals and principles and the specific goals and principles for each vegetation classification of this Stipulation and Order apply to vegetation on the Cone.

APPENDIX B

Section IV.D of the Green Book

MEMORANDUM

7 November 1996

TO: Inyo County/Los Angeles Standing Committee
FROM: Inyo County/Los Angeles Technical Group

**CONSIDERATION OF GREEN BOOK SECTION
DESCRIBING THE BISHOP CONE AUDIT**

Background

Section VII.A of the Inyo County/Los Angeles long-term water management agreement provides that "before the Department may increase groundwater pumping above present levels, or construct any new wells on the [Bishop] Cone, the Technical Group must agree on a method for determining the exact amount of water annually used on Los Angeles-owned lands on the Cone. The agreed upon method shall be based on a jointly conducted audit of such water uses."

At its 17 October 1995 meeting, the Technical Group agreed to recommend to the Inyo County/Los Angeles Standing Committee the attached description of a Bishop Cone audit to be incorporated into the Green Book (the technical appendix to the long-term agreement).

Request

The Technical Group requests that the Standing Committee adopt the attached description as section IV.D of the Green Book.

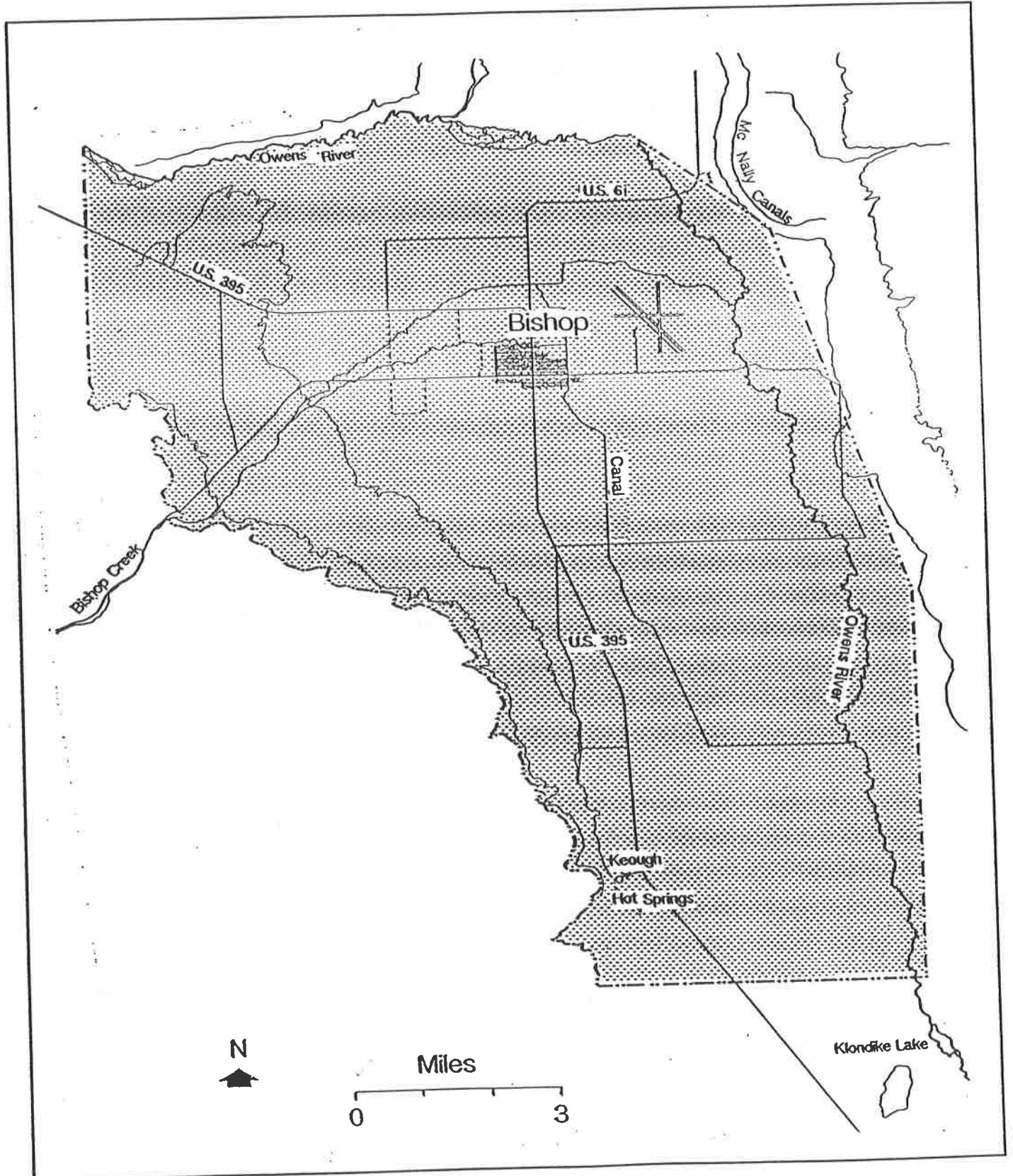
D. Bishop Cone Audit

This sub-section describes the procedures for conducting the Bishop Cone audit in accordance with Section VII.A of the Agreement. The Bishop Cone audit is an annual accounting of LADWP groundwater extraction and water usage on Los Angeles-owned land on the Bishop Cone. The Agreement provides that, during any runoff year, total groundwater extraction by LADWP on the Bishop Cone shall not exceed water usage on Los Angeles-owned land on the Cone. The area defined as the Bishop Cone is shown as Figure IV.D.1.

1. Procedures for Conducting the Bishop Cone Audit
 - a. For the purposes of the Bishop Cone audit, water usage on Los Angeles-owned land on the Bishop Cone is defined as the quantity of water supplied to such land, including conveyance losses, less any return flow to the aqueduct system. Water usage is documented on a runoff-year basis and is compiled by LADWP each May in the Bishop Area Water Use Report. At the conclusion of each runoff year, LADWP will forward the final water use report for the runoff year to Inyo County.
 - b. The final water use report will be compared for consistency with the previous year's report. If measuring stations have been added or removed from the water-use report during the year, or if a significant change in the pattern of water usage occurs (for example, an account that has not received water for one year receives a

FIGURE IV.D.1

Bishop Cone Boundary



considerable amount the next year), the location will be field-checked. The field-check will evaluate whether changes in water usage warrant the changes noted in the report. If a change is made in the method of delivery to or return from an account that results in an overestimation of uses on the Bishop Cone, water usage for that account will not be credited to the total uses for the audit.

- c. Water usage for accounts BAIND (Bishop Indian Reservation), BA391 (outside of Bishop Cone boundary), and BAWEST (West Bishop private uses) will be subtracted from the total reported water usage.
- d. Total groundwater extraction by LADWP will be compared with the corrected water usage on the Bishop Cone for the runoff year. Total groundwater extraction is defined as the sum of all groundwater pumped by LADWP plus the amount of artesian water that flowed out of uncapped wells on the Bishop Cone during the runoff year. During any runoff year, total groundwater extraction by LADWP on the Bishop Cone shall not exceed water usage on Los Angeles-owned land on the Cone.
- e. A draft report summarizing the results of the Bishop Cone audit will be prepared annually as an Inyo County Water Department report and will be submitted to the Technical Group in June for a 30-day review.
- f. A final Bishop Cone audit report will be submitted in July to the Technical Group, the Standing

Committee, the Inyo County Board of Supervisors,
and the Inyo County Water Commission.

LADWP will notify Inyo County of any changes in the status, location, or operation of any measuring station used to conduct the Bishop Cone audit at the time the final Bishop Area Water Use Report is submitted to the County. LADWP will also notify the County of any changes in the boundaries of the accounts included in the audit.

Upon request by Inyo County, LADWP will provide measuring station data for accounts included in the audit to assist the County in verifying water usage for individual accounts.

APPENDIX C

Data on Uses and Total Groundwater Extracted on the Bishop Cone
(Supplied by LADWP)

BISHOP CONE AUDIT RUNOFF SUMMARY
 IN ACRE-FEET

STAID	STATION NAME	+/-	2023									2024			SUBTOTAL TOTAL ¹	
			APR	MAY	JUN	JUL	AUG	SEP	OCT	NOV	DEC	JAN	FEB	MAR	APR-MAR	APR-MAR
	3049 #161 OTEY		67	93	49	62	51	16	9	14	49	38	22	24	495	
	3377 OTEY DITCH RETURN AT MATLICK DITCH	(-)	48	58	39	45	43	18	13	18	50	40	25	28	426	
BC005A			20	35	10	17	8	-2	-4	-4	-1	-3	-3	-4	69	90
	3378 OTEY DITCH DIV. ABOVE MATLICK DITCH		35	56	37	43	32	15	10	2	0	0	0	0	230	
BC005B			35	56	37	43	32	15	10	2	0	0	0	0	230	230
	3048 #61-A FRANK ROUFF		101	94	80	87	76	42	63	48	37	17	15	31	692	
	3063 DUGGAN DITCH FLOW THROUGH	(-)	93	85	70	75	61	34	54	41	30	14	12	25	593	
BC006A			8	9	10	12	15	8	9	8	7	3	3	6	98	98
	3002 GEORGE DITCH W. OF SUNLAND AVENUE		35	33	59	104	70	50	31	18	18	17	15	11	460	
	3264 NORTH INDIAN DITCH BELOW A-1 DRAIN B3A		213	277	335	219	259	216	39	29	277	213	50	112	2,238	
	3068 GEORGE DITCH C-3	(-)	14	17	25	34	31	23	22	10	16	15	15	10	231	
	3370 NORTH INDIAN DIVERSION W/O SUNLAND	(-)	3	9	14	2	0	0	0	0	0	0	0	0	29	
	3364 NORTH INDIAN DITCH W/O HWY 395	(-)	181	234	285	181	216	185	31	22	258	191	42	91	1,916	
BC1478			50	50	70	106	82	58	17	14	22	24	8	21	522	522
	3025 SOUTH INDIAN DITCH DIVERSION #3		2	4	7	10	6	5	1	0	0	0	0	0	35	
BC1479			2	4	7	10	6	5	1	0	0	0	0	0	35	35
	3396 NELLIGAN DIV. #1		93	168	303	298	233	249	194	175	143	70	54	138	2,117	
	3397 NELLIGAN BELOW DIV. #1		72	87	108	122	124	102	78	55	62	39	30	64	943	
	3401 YOUNG DITCH #2		106	191	161	213	126	93	40	49	131	65	47	53	1,275	
	3421 TOM KEY DITCH ABOVE DIVERSION		27	40	52	58	37	51	47	41	19	17	13	27	430	
	3050 HOLLAND #63-B	(-)	24	25	32	37	33	30	24	16	19	20	15	16	293	
	3404 NELLIGAN DITCH #2	(-)	106	142	240	276	264	219	219	190	188	92	61	91	2,087	
	3402 YOUNG DITCH #3	(-)	58	106	126	169	105	84	47	56	141	72	52	66	1,080	
	3407 YOUNG DITCH #4	(-)	5	18	16	4	2	0	0	0	0	0	0	0	46	
	3422 TOM KEY DITCH BELOW DIVERSION	(-)	23	33	46	42	31	44	45	38	15	15	11	23	366	
BC301			81	161	164	162	85	118	24	20	-8	-6	5	86	892	906

STAID	STATION NAME	+/-	2023										2024			SUBTOTAL TOTAL ¹	
			APR	MAY	JUN	JUL	AUG	SEP	OCT	NOV	DEC	JAN	FEB	MAR	APR-MAR	APR-MAR	
	3006 HALL DITCH @ GOLF COURSE RETURN		0	39	4	63	51	5	0	0	0	0	0	0	162		
BC302A			0	39	4	63	51	5	0	0	0	0	0	0	162	162	
	3161 BISHOP CK DITCH #16		176	124	188	183	160	102	157	103	49	43	31	43	1,358		
	3162 BISHOP CK DITCH #17		40	33	46	101	71	0	0	0	0	0	0	0	291		
	3164 BISHOP CK DITCH #20		20	107	66	29	75	34	0	6	17	23	15	56	448		
	3165 BISHOP CK DITCH #21		40	133	32	26	50	23	0	0	0	0	0	0	303		
BC302B			275	397	331	339	356	159	157	109	66	66	46	99	2,400	2,400	
	3026 NEWLON DITCH BOYD PUMP PLANT		0	11	5	27	23	22	11	1	0	0	0	0	101		
BC304			0	11	5	27	23	22	11	1	0	0	0	0	100	100	
	3166 BISHOP CK DITCH #5		313	121	147	251	200	161	130	0	0	0	0	63	1,387		
	3022 BISHOP CK DITCH #5-A		76	150	175	70	87	14	22	19	0	0	3	0	615		
	3167 BISHOP CK DITCH #9		212	276	258	232	313	257	134	4	6	0	0	163	1,855		
	3168 BISHOP CK DITCH #30		458	535	390	676	600	343	224	50	60	57	47	235	3,673		
	3392 FORD RAWSON-DIV 1A		2	2	0	2	2	2	1	0	0	0	0	0	11		
BC311			1,061	1,084	970	1,231	1,201	777	511	73	66	57	50	460	7,541	7,541	
	3016 NORTH INDIAN DITCH ABOVE MUMY LANE #58-E		789	1,098	1,063	1,155	1,040	847	676	587	396	355	304	320	8,631		
	3017 WONACOTT A-2		120	190	224	219	131	122	117	105	31	25	25	46	1,355		
	3015 WONACOTT A-1	(-)	100	140	108	167	156	152	165	102	46	37	34	90	1,299		
	3054 WONACOTT A-3 RETURN	(-)	85	150	163	177	106	95	96	69	18	14	13	26	1,013		
	3051 WONACOTT #58-F	(-)	31	27	43	48	41	19	13	23	14	14	14	19	306		
	3018 NORTH INDIAN B-2	(-)	459	671	543	637	705	576	395	393	284	241	211	165	5,281		
BC313			234	300	429	346	162	127	123	104	65	74	56	66	2,086	2,086	
	3370 NORTH INDIAN DIVERSION W/O SUNLAND		3	9	14	2	0	0	0	0	0	0	0	0	29		
	3270 SOUTH INDIAN D-3		295	391	420	339	396	277	270	367	273	205	148	199	3,580		
	3005 SOUTH INDIAN DITCH D-4	(-)	158	166	169	149	157	104	208	223	146	106	63	91	1,740		
BC324			140	234	265	192	239	173	63	144	127	99	86	108	1,870	1,870	
	3402 YOUNG DITCH #3		58	106	126	169	105	84	47	56	141	72	52	66	1,080		
	3407 YOUNG DITCH #4		5	18	16	4	2	0	0	0	0	0	0	0	46		
	3403 YOUNG DITCH RETURN TO NELLIGAN	(-)	36	42	91	143	113	78	67	68	145	97	76	68	1,023		
BC335			28	82	50	31	-7	7	-20	-12	-4	-26	-24	-2	103	198	

STAID	STATION NAME	+/-	2023									2024			SUBTOTAL TOTAL ¹	
			APR	MAY	JUN	JUL	AUG	SEP	OCT	NOV	DEC	JAN	FEB	MAR	APR-MAR	APR-MAR
	2026 FORD RAWSON CANAL BELOW BISHOP CK CANAL		1,257	1,013	1,347	1,281	1,138	880	1,180	475	133	157	87	747	9,693	
	3368 RAWSON & KEOUGH DITCH E/O HWY 395		34	28	28	8	9	7	5	5	1	17	15	19	176	
	2004 FORD RAWSON CANAL DIV. #7	(-)	491	307	242	462	210	206	672	350	99	94	121	289	3,543	
	2043 YRIBARREN RETURN #2	(-)	--	--	--	--	--	--	--	--	--	--	--	--	0	
	3369 RAWSON & KEOUGH DITCH RETURN AT A-DRAIN	(-)	2	5	12	4	7	7	7	6	6	6	10	7	79	
BC338			798	728	1,121	823	930	674	507	124	29	74	-30	469	6,247	6,277
	3170 KINGSLEY C-1		162	78	263	288	135	51	57	32	32	24	16	12	1,151	
BC339			162	78	263	288	135	51	57	32	32	24	16	12	1,150	1,150
	3015 WONACOTT A-1		100	140	108	167	156	152	165	102	46	37	34	90	1,299	
	3053 TOMMY SMITH DITCH #162-A		38	29	41	39	30	26	7	0	0	0	0	20	230	
	3017 WONACOTT A-2	(-)	120	190	224	219	131	122	117	105	31	25	25	46	1,355	
BC353			17	-21	-75	-13	56	56	55	-2	15	12	9	65	174	285
	3036 NORTH FORK BISHOP CREEK I-1(#155 STANLEY MATLICK)		3	14	42	49	11	0	0	0	0	0	0	0	118	
	3004 BISHOP CK N. FORK I-2		371	602	759	847	800	350	211	0	0	0	0	0	3,941	
	3316 IRRIGATION FROM WELL #406		0	0	0	0	0	0	0	0	0	0	0	0	0	
	3042 TATUM RETURN AT HIGHWAY 6	(-)	17	22	17	23	21	0	0	0	0	0	0	0	100	
	3039 TATUM RETURN AT BISHOP CK CANAL	(-)	47	50	49	72	73	47	50	39	39	39	41	38	585	
BC361A			311	544	734	801	716	303	161	-39	-39	-39	-41	-38	3,374	3,570
	3009 MATLICK DITCH F-10		197	243	225	292	253	99	248	62	62	58	52	41	1,831	
	3040 MATLICK DITCH F-13 N		72	95	153	192	141	45	104	202	235	147	88	114	1,589	
	3008 MATLICK DITCH F-13 E		34	68	97	119	107	140	65	32	73	13	30	42	821	
	3007 MATLICK DITCH F-14		20	28	31	29	33	36	37	27	12	10	9	16	287	
	3035 MATLICK DITCH #154		101	119	95	152	147	77	41	69	62	67	68	84	1,082	
	3154 SCHILDER RETURN G-2	(-)	52	26	22	35	84	30	122	39	41	25	32	10	518	
	3037 MATLICK DITCH #63-A	(-)	28	42	66	33	40	43	44	32	16	14	15	21	394	
	3038 TATUM RETURN H-1	(-)	14	193	118	0	67	0	0	0	0	0	34	44	470	
	3003 MATLICK DITCH RETURN @ B-1 DRAIN	(-)	5	10	3	14	6	2	0	25	34	35	31	39	203	
	3010 MATLICK RETURN TO "C" DRAIN	(-)	3	16	36	16	31	25	32	88	112	126	75	88	649	
BC361B			324	265	354	686	454	296	297	210	240	95	59	95	3,375	3,375
	3388 INDIAN S. RETURN ON SEE-VEE LANE		96	125	100	186	136	92	87	48	41	55	65	72	1,104	
	3389 INDIAN MIDDLE RETURN ON SEE-VEE LANE		2	1	1	0	0	2	0	0	0	0	0	0	7	
	3390 INDIAN N. RETURN ON SEE-VEE LANE		39	33	34	27	9	36	10	5	7	11	8	15	234	
BC362D			138	159	135	213	145	129	98	53	48	66	74	88	1,346	1,346

STAID	STATION NAME	+/-	2023										2024			SUBTOTAL TOTAL ¹	
			APR	MAY	JUN	JUL	AUG	SEP	OCT	NOV	DEC	JAN	FEB	MAR	APR-MAR	APR-MAR	
	3043 NORTH INDIAN DITCH B-3		325	280	262	289	316	282	56	3	0	0	0	12	1,827		
	3011 WEST LINE L-2		16	27	35	36	18	8	2	1	5	10	14	13	184		
BC387A			342	307	296	326	334	291	58	4	5	10	14	25	2,012	2,012	
	3387 MATLICK DITCH TO THE N.		233	247	276	320	234	154	181	183	119	41	36	58	2,080		
	3398 MATLICK DITCH #1		327	396	395	478	417	231	355	359	457	198	82	102	3,797		
	3399 REINHACKLE #1		110	111	173	179	151	138	254	230	247	179	96	121	1,990		
	3400 YOUNG DITCH #1		84	114	83	98	90	32	0	9	59	10	0	0	580		
	3424 MCLAREN TAILWATER		58	99	99	125	82	71	45	56	72	55	47	53	863		
	3401 YOUNG DITCH #2	(-)	106	191	161	213	126	93	40	49	131	65	47	53	1,275		
	3406 C-DRAIN AT INTAKE	(-)	339	384	521	581	457	315	528	707	804	405	188	251	5,482		
	3009 MATLICK DITCH F-10	(-)	197	243	225	292	253	99	248	62	62	58	52	41	1,831		
BC392			171	148	119	113	139	119	18	19	-44	-44	-26	-11	721	846	
	3061 KINGSLEY DITCH PUMP DIV. AT DIV. #2		0	0	3	7	6	4	1	0	0	0	0	0	20		
	3171 BISHOP CK DITCH #11		0	0	37	43	27	0	49	1	2	8	3	0	169		
BC393			0	0	39	50	33	4	50	1	2	8	3	0	190	190	
	3163 BISHOP CK DITCH #19		458	505	505	479	394	309	293	117	0	0	48	3,106			
	3174 BISHOP CK DITCH #22		141	241	101	312	238	234	62	0	0	0	65	1,395			
	3019 BISHOP CK CANAL DIV. #24		316	357	504	447	456	364	311	99	40	36	30	54	3,014		
	3020 BISHOP CK CANAL DIV. #25		0	0	37	144	91	44	43	0	0	0	0	0	358		
	3177 BISHOP CK DITCH #26		261	372	338	281	405	244	102	0	0	0	85	2,088			
	3178 BISHOP CK DITCH #27		43	33	43	43	32	26	11	0	0	0	5	236			
	3179 BISHOP CK DITCH #28		78	104	79	117	96	82	38	0	0	0	20	613			
	3024 BISHOP CK CANAL DIV. #29		404	435	391	323	416	257	234	138	107	54	52	248	3,058		
BC397			1,700	2,047	1,998	2,145	2,127	1,559	1,093	354	147	90	82	525	13,867	13,867	
	3012 GEORGE DITCH C-1		80	74	105	127	76	72	35	17	19	27	19	15	666		
	3365 PARK W. RETURN S/O A-DRAIN		91	134	175	169	138	173	83	37	0	0	2	20	1,022		
	3047 4 X - 58D		422	698	649	573	592	479	417	440	301	196	142	202	5,111		
	3366 SOUTH INDIAN DITCH DIVERSION #1 N/O SCHOBER LANE		18	26	28	41	14	21	4	0	0	0	0	0	154		
	3367 SOUTH INDIAN DITCH DIVERSION #2 N/O SCHOBER LANE		62	72	103	117	71	63	27	4	0	0	0	1	522		
	W408 WELL 408		0	0	0	0	0	0	0	0	0	0	0	0	0		
	3002 GEORGE DITCH W. OF SUNLAND AVENUE	(-)	35	33	59	104	70	50	31	18	18	17	15	11	460		
	3046 SOUTH INDIAN RETURN AT A-1 DRAIN	(-)	166	381	270	219	213	240	166	117	38	0	8	47	1,864		
	3270 SOUTH INDIAN D-3	(-)	295	391	420	339	396	277	270	367	273	205	148	199	3,580		
BC500			177	200	311	366	212	241	100	-2	-8	2	-8	-19	1,572	1,609	

STAID	STATION NAME	+/-	2023										2024			SUBTOTAL TOTAL ¹	
			APR	MAY	JUN	JUL	AUG	SEP	OCT	NOV	DEC	JAN	FEB	MAR	APR-MAR	APR-MAR	
	3027 HALL DITCH PUMP PLANT #2@DON TATUM LEASE(KOCH)		26	28	28	33	20	20	16	3	0	0	0	0	175		
	3028 HALL DITCH PUMP PLANT #4 AT DON TATUM LEASE		138	182	141	123	135	148	106	17	0	0	0	0	990		
BC502A			164	211	170	156	156	168	122	19	0	0	0	0	1,166	1,166	
	3031 A-1 DRAIN PUMP PLANT #1 S/O HALL DITCH		--	--	--	--	--	--	--	--	--	--	--	0			
	3032 A-1 DRAIN PUMP PLANT #3 AT WELL #140		62	101	101	136	95	72	58	10	0	0	0	635			
BC502B			62	101	101	136	95	72	58	10	0	0	0	635	635		
	2086 A-DRAIN DIV. TO ARKANSAS FLATS		299	307	396	605	603	552	615	595	352	217	0	0	4,539		
BCOPRB			299	307	396	605	603	552	615	595	352	217	0	0	4,541	4,541	
	3155 BISHOP CK DITCH #5-B		255	243	230	259	180	194	185	16	0	0	8	211	1,780		
BCRECA			255	243	230	259	180	194	185	16	0	0	8	211	1,781	1,781	
	3021 BISHOP CK CANAL DIV. #67		301	318	46	186	102	6	85	0	0	0	0	16	1,060		
BCRECC			301	318	46	186	102	6	85	0	0	0	0	16	1,060	1,060	
	3194 SOUTH FORK BISHOP CREEK BELOW BISHOP CREEK CANAL		1,006	1,122	1,296	1,448	1,409	1,227	1,241	1,108	691	561	393	784	12,285		
	3193 SANDERS POND RETURN AT OWENS RIVER	(-)	167	234	144	258	224	201	238	219	200	245	262	354	2,746		
	3066 RAWSON POND #3 RETURN TO OWENS RIVER	(-)	102	101	64	78	108	117	192	77	48	55	114	127	1,184		
BCRECD			738	786	1,087	1,112	1,078	909	811	812	443	261	16	302	8,355	8,355	
	3023 KINGSLEY DITCH DIV. C-4		240	366	416	430	293	238	276	233	168	184	173	184	3,202		
	3183 CEMETERY DITCH AT E. LINE ST.	(-)	41	56	74	66	67	62	44	23	0	0	0	28	463		
BCRECF			199	310	342	364	226	176	232	210	167	184	173	156	2,739	2,739	
	3242 BISHOP CK CANAL DIV. TO 5 BRIDGES #2		86	102	68	127	184	219	266	140	84	54	0	0	1,329		
	3317 BISHOP CK CANAL DIV. TO 5 BRIDGES #6		75	105	86	186	119	80	106	70	2	0	5	4	838		
BCLAEMH			160	206	155	312	303	298	372	210	86	54	5	4	2,165	2,165	
	3185 MCGEE CK AT ABERLOUR RANCH		633	957	1,218	1,895	1,225	360	249	278	271	266	266	284	7,901		
	3235 MILL POND RETURN	(-)	145	246	238	297	241	125	104	134	157	143	115	123	2,066		
BCRVRECA			487	711	980	1,598	985	235	145	145	114	123	151	161	5,835	5,835	

STAIID	STATION NAME	+/-	2023									2024			TOTAL ^{*1}	
			APR	MAY	JUN	JUL	AUG	SEP	OCT	NOV	DEC	JAN	FEB	MAR	APR-MAR	
BC005A	ONEY - OTEY DITCH		20	35	10	17	8	0	0	0	0	0	0	0	0	90
BC005B	SAFSTROM - MATLICK DITCH		35	56	37	43	32	15	10	2	0	0	0	0	0	230
BC006A	BARTON - MATLICK DITCH		8	9	10	12	15	8	9	8	7	3	3	6	98	
BC1478	INDIAN CREEK RANCH - GEORGE AND N. INDIAN DITCH		50	50	70	106	82	58	17	14	22	24	8	21	522	
BC1479	HIDDEN CREEKS RANCH - SOUTH INDIAN DITCH		2	4	7	10	6	5	1	0	0	0	0	0	35	
BC301	AUBREY AND MOXLEY - NELLIGAN AND YOUNG DITCHES		81	161	164	162	85	118	24	20	0	0	5	86	906	
BC302A	BOOTHE - HALL DITCH		0	39	4	63	51	5	0	0	0	0	0	0	162	
BC302B	BOOTH - BISHOP CREEK CANAL		275	397	331	339	356	159	157	109	66	66	46	99	2,400	
BC304	ANDREW AND DAN BOYD - NEWLON DITCH		0	11	5	27	23	22	11	1	0	0	0	0	100	
BC311	J.W. CASHBAUGH, ET AL - BISHOP CREEK CANAL		1,061	1,084	970	1,231	1,201	777	511	73	66	57	50	460	7,541	
BC313	BOYD AND ONEY - NORTH INDIAN DITCH		234	300	429	346	162	127	123	104	65	74	56	66	2,086	
BC324	DANIELS, ROSSI, HANNON - N. AND S. INDIAN DITCH		140	234	265	192	239	173	63	144	127	99	86	108	1,870	
BC335	PARTRIDGE AND JOHNSON - YOUNG DITCH		28	82	50	31	0	7	0	0	0	0	0	0	198	
BC338	YRIBARREN AND OPS - FORD RAWSON CANAL AND KEOUGH		798	728	1,121	823	930	674	507	124	29	74	0	469	6,277	
BC339	DOHNEL - KINGSLEY DITCH		162	78	263	288	135	51	57	32	32	24	16	12	1,150	
BC353	HADELER AND MILORADICH - WONACOTT AND SMITH DITCH		17	0	0	0	56	56	55	0	15	12	9	65	285	
BC361A	ST RANCH - NORTH FORK BISHOP CREEK		311	544	734	801	716	303	161	0	0	0	0	0	3,570	
BC361B	ST RANCH - MATLICK DITCH		324	265	354	686	454	296	297	210	240	95	59	95	3,375	
BC362D	JJ TATUM, LJ TATUM - DAIRY DITCH		138	159	135	213	145	129	98	53	48	66	74	88	1,346	
BC387A	GIACOMINI - NORTH INDIAN DITCH		342	307	296	326	334	291	58	4	5	10	14	25	2,012	
BC392	LACEY LIVESTOCK - YOUNG AND MATLICK DITCHES		171	148	119	113	139	119	18	19	0	0	0	0	846	
BC393	CABALLERO - KINGSLEY DITCH		0	0	39	50	33	4	50	1	2	8	3	0	190	
BC397	GIACOMINI - BISHOP CREEK CANAL		1,700	2,047	1,998	2,145	2,127	1,559	1,093	354	147	90	82	525	13,867	
BC500	TALBOT - GEORGE AND S. INDIAN DITCH		177	200	311	366	212	241	100	0	0	2	0	0	1,609	
BC502A	SMITH AND STICKELLS - HALL DITCH		164	211	170	156	156	168	122	19	0	0	0	0	1,166	
BC502B	SMITH AND STICKELLS - A-1 DRAIN		62	101	101	136	95	72	58	10	0	0	0	0	635	
BCOPRB	A DRAIN - A DRAIN		299	307	396	605	603	552	615	595	352	217	0	0	4,541	
BCRECA	FARMERS PONDS - BISHOP CREEK CANAL		255	243	230	259	180	194	185	16	0	0	8	211	1,781	
BCRECC	SADDLE CLUB - BISHOP CREEK CANAL		301	318	46	186	102	6	85	0	0	0	0	16	1,060	
BCRECD	BUCKLEY PONDS - SOUTH FORK BISHOP CREEK		738	786	1,087	1,112	1,078	909	811	812	443	261	16	302	8,355	
BCRECF	FOREST SERVICE - KINGSLEY DITCH		199	310	342	364	226	176	232	210	167	184	173	156	2,739	
BCLAEMH	FIVE BRIDGES RECHARGE - BISHOP CREEK CANAL		160	206	155	312	303	298	372	210	86	54	5	4	2,165	
BCRVRECA	MILL POND - MCGEE CREEK		487	711	980	1,598	985	235	145	145	114	123	151	161	5,835	
BC Audit Raw Total			8,739	10,111	11,155	13,107	11,261	7,805	6,020	3,230	1,928	1,427	731	2,902	79,042	
Accounts with no ICWD Credit Totals (RVRECA, 362D, 392)		(-)	796	1,018	1,234	1,924	1,269	483	261	217	162	189	225	249	8,027	
BC AUDIT ICWD "Use" Total			7,943	9,093	9,921	11,183	9,992	7,322	5,759	3,013	1,766	1,238	506	2,653	71,015	

*1 Negative uses are not counted in the runoff year summed account totals.

2023/24 RUNOFF YEAR BISHOP CONE FLOWING WELL TOTALS

(ACRE-FEET)

	2023								2024				
WELL	APR	MAY	JUN	JUL	AUG	SEP	OCT	NOV	DEC	JAN	FEB	MAR	TOTAL
F121	3	9	25	15	12	12	12	11	7	6	6	6	124
F122	6	7	6	7	7	7	8	7	8	10	14	16	104
F123	14	15	16	18	17	18	19	19	20	19	18	19	211
F124	0	0	0	0	0	0	0	0	0	0	0	0	0
F125	95	101	98	104	105	102	112	110	118	118	116	107	1,286
F126	33	36	38	41	42	43	43	42	44	43	41	38	484
F127	38	41	40	41	41	41	45	47	51	50	49	52	537
F128	25	28	30	33	31	31	35	36	36	37	36	38	396
F129	8	10	11	11	10	8	4	4	9	9	8	9	103
F130	35	36	36	39	40	40	43	42	44	44	42	45	485
F131	79	85	86	91	91	89	94	93	96	96	89	92	1,083
F132	30	34	34	34	36	36	41	44	38	36	36	40	440
F133	28	32	31	34	37	38	40	41	41	40	39	37	438
F134	70	75	72	72	77	75	77	76	82	82	80	86	922
F136	17	20	20	21	25	26	28	29	28	27	27	25	293
TOTAL	482	530	544	562	572	565	600	601	620	618	599	610	6,904

2023/24 RUNOFF YEAR BISHOP CONE PUMPING WELL TOTALS

(ACRE-FEET)

<u>WELL</u>	2023						2024						TOTAL
	<u>APR</u>	<u>MAY</u>	<u>JUN</u>	<u>JUL</u>	<u>AUG</u>	<u>SEP</u>	<u>OCT</u>	<u>NOV</u>	<u>DEC</u>	<u>JAN</u>	<u>FEB</u>	<u>MAR</u>	
W140	170	133	30	0	0	0	0	0	0	0	0	0	333
W371	0	0	0	0	0	0	0	0	0	0	0	0	0
W406	0	0	0	0	0	0	0	0	0	0	0	0	0
W407	141	183	119	0	0	0	0	0	0	0	0	0	443
W408	0	0	0	0	0	0	0	0	0	0	0	0	0
W410	0	0	0	0	0	0	0	0	0	0	0	0	0
W411	0	0	0	0	0	0	0	0	0	0	0	0	0
W412	0	0	0	0	0	0	0	0	0	0	0	0	0
TOTAL	311	316	149	0	0	0	0	0	0	0	0	0	776