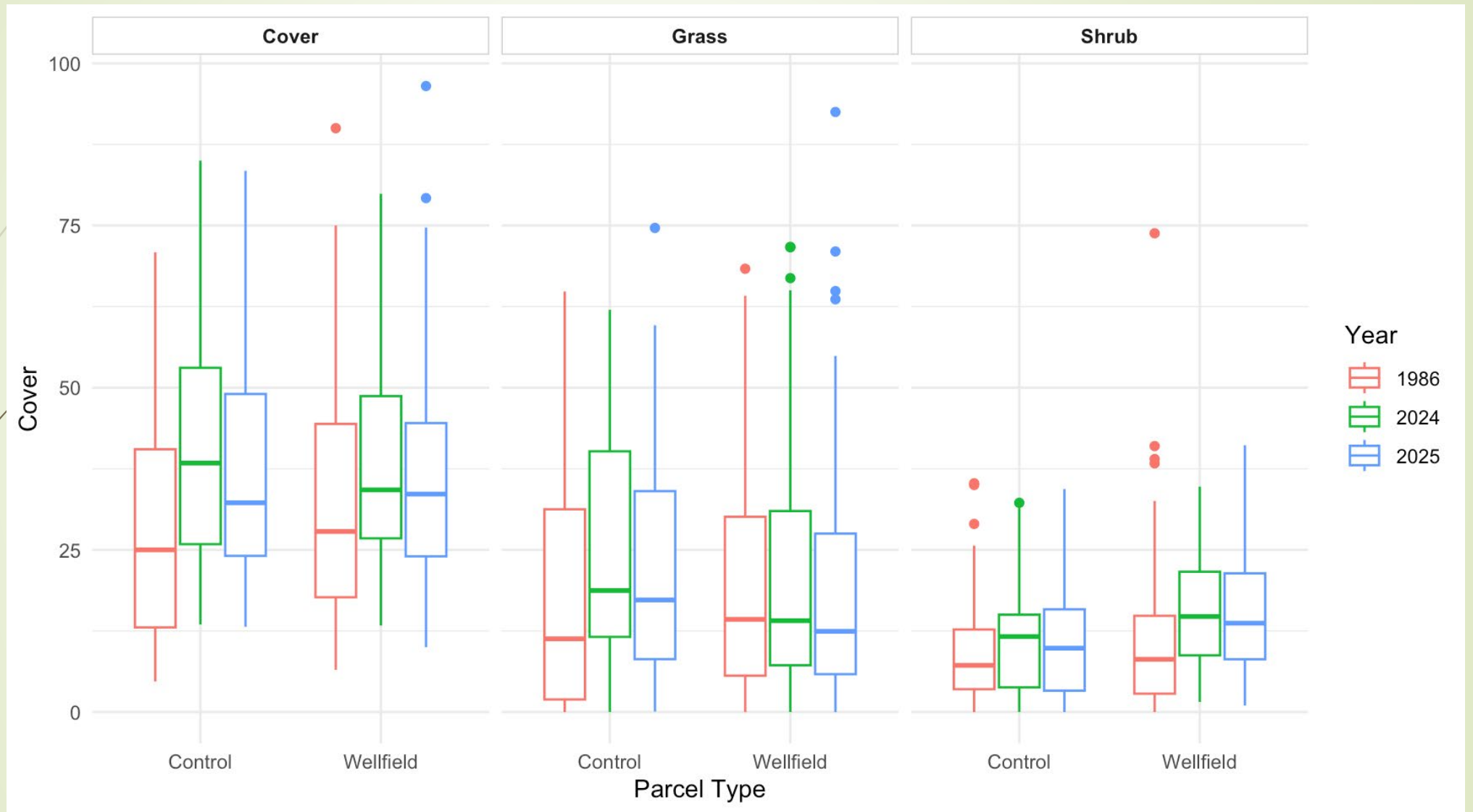


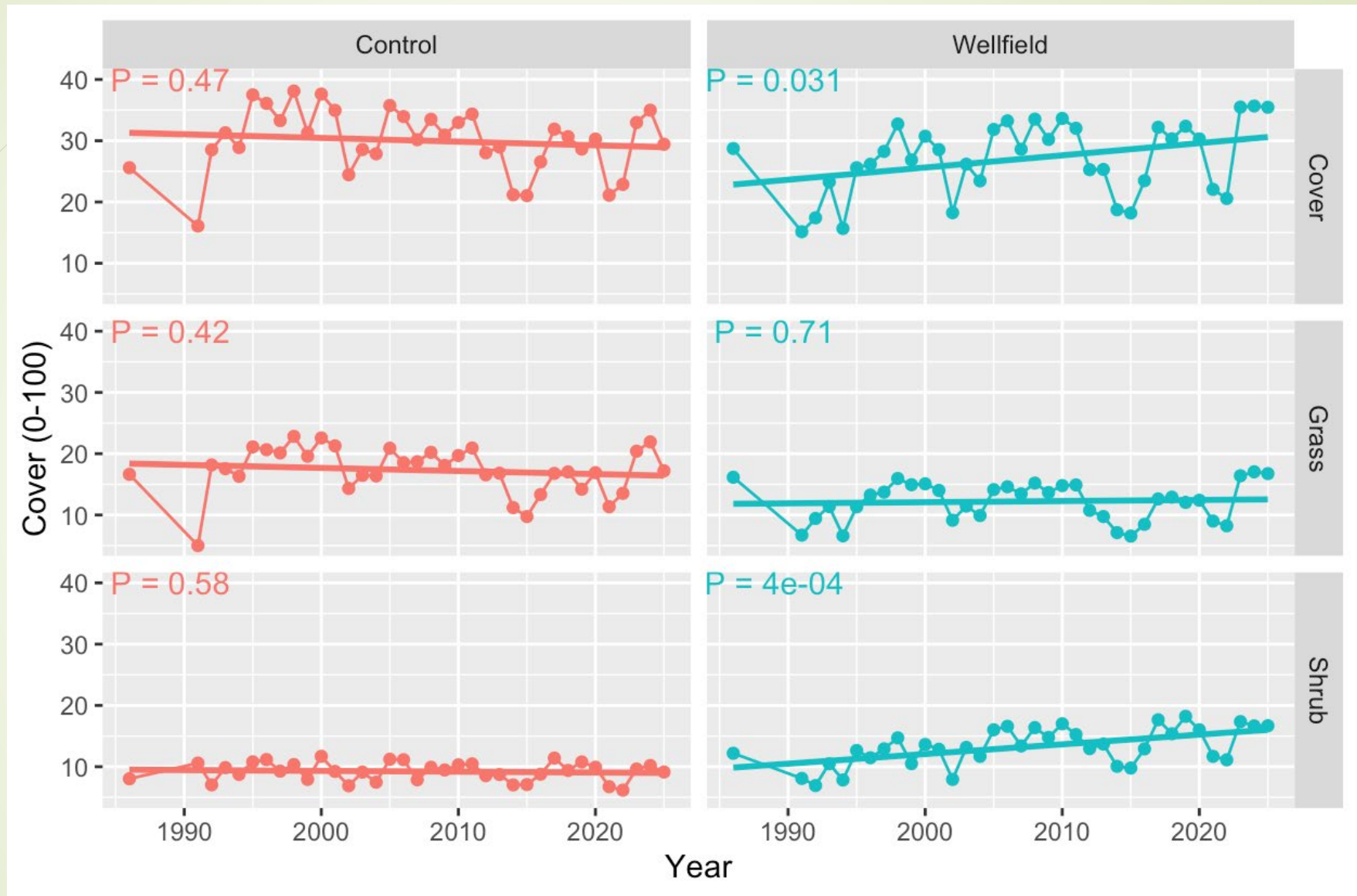



2025 Vegetation Conditions

Inyo County Water Commission Meeting

February 9, 2025







BLK075 (grass below since early 1990s minus 2017)	LAW043 (Type E; grass below since 2003)
BLK094 (grass below since 1999)	LAW052 (grass below since early 90s)
FSL044 (grass below since 2004, first year of measurement)	LAW082 (grass below since early 90s)
FSL054 (Type D; shrub below since 2006, first year of measurement)	LAW136 (grass below since 2006)
FSP006 (Type AC – grass below since 1991)	PLC028 (grass below since 2007)
IND021 (grass below since 2014)	TIN050 (grass below since 2009)
IND026 (grass below since 2005, first year of measurement)	TIN053 (Type A – grass below since 2012)
IND029 (grass below since 2001, first year of measurement)	TIN064 (grass below since early 1990s)
LAW035 (grass below since 2003)	TIN068 (Type A – grass below since 2001)

2025/2026 RUNOFF YEAR PUMPING TOTALS
(ACRE FEET)

	BISHOP	LAWS	BIG PINE	TABOOSE- ABERDEEN	THIBAUT- SAWMILL	INDEPEN.- OAK	SYMMES- SHEPHERD	BAIRS- GEORGES	LONE PINE	TOTAL
APR	1,141	825	2,036	63	602	897	253	99	100	6,016
MAY	1,368	843	2,087	64	622	935	247	98	71	6,335
JUN	1,454	990	1,566	163	597	901	227	5	79	5,982
JUL	1,543	1,424	1,676	278	616	939	222	9	68	6,775
AUG	1,589	1,499	1,707	1,380	614	895	200	93	100	8,077
SEP	1,449	1,260	1,148	1,203	593	662	193	97	79	6,684
OCT	374	538	1,193	284	612	309	0	89	13	3,412
NOV	350	303	997	53	550	242	0	94	9	2,598
DEC	361	378	1,014	37	643	240	0	93	6	2,772
JAN										0
FEB										0
MAR										0
TOTAL	9,629	8,060	13,424	3,525	5,449	6,020	1,342	677	525	48,651